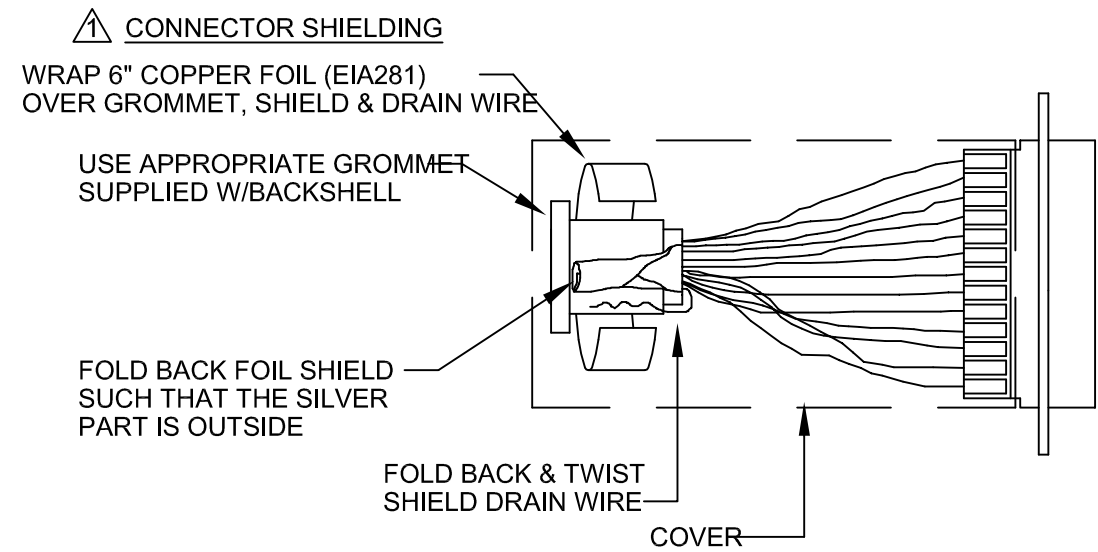
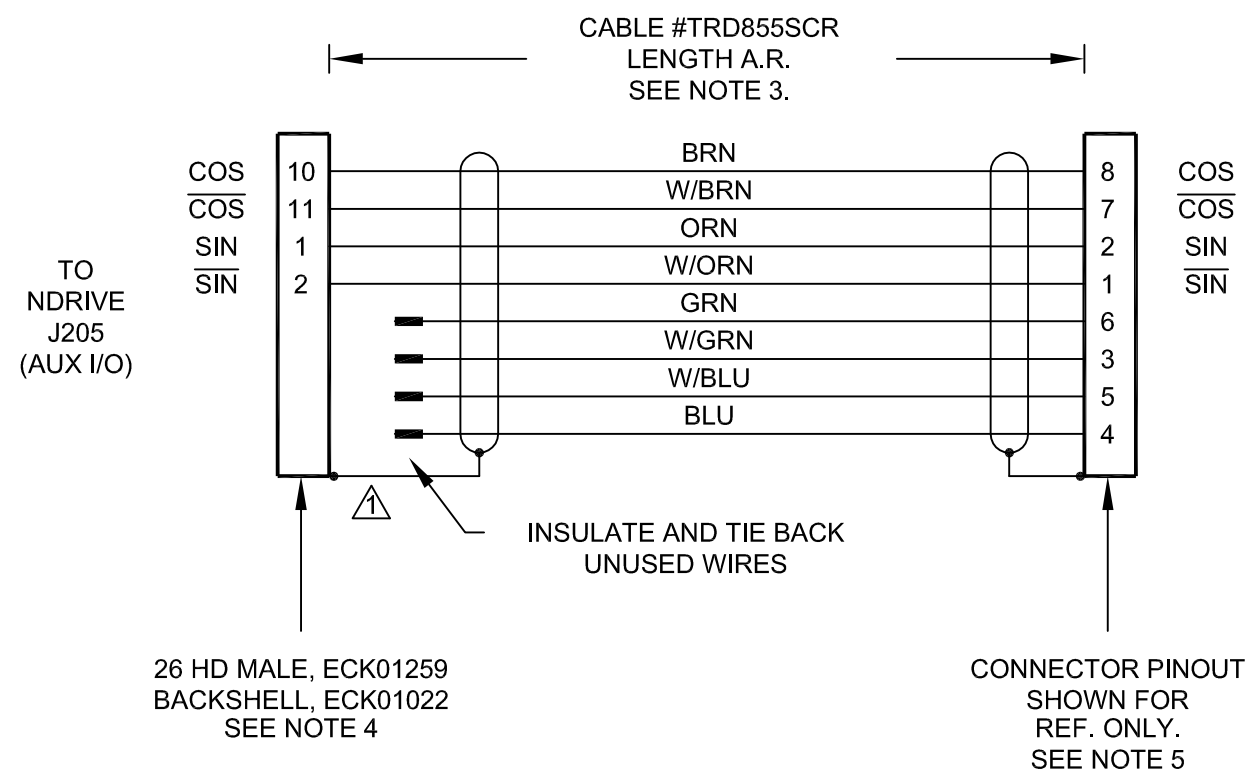
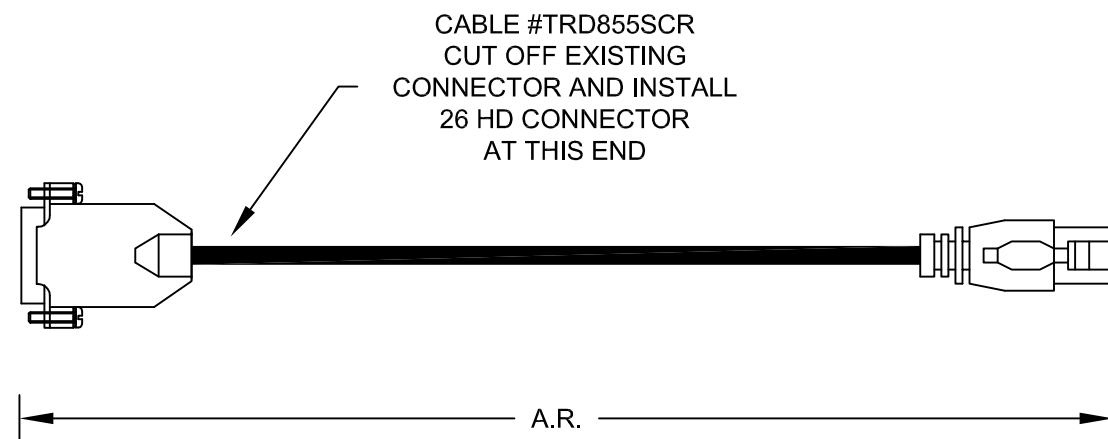
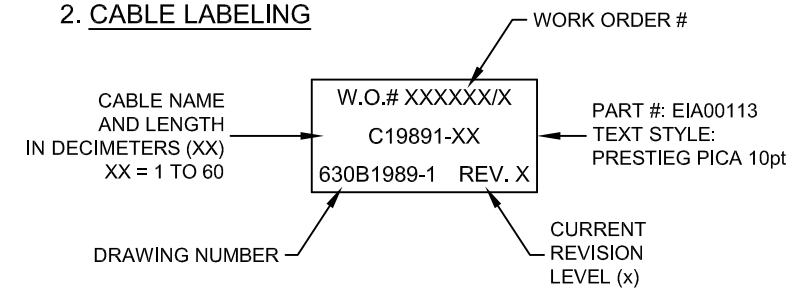


REVISIONS

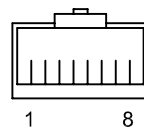
SYM.	DESCRIPTION	DATE	APPROVAL
------	-------------	------	----------



2. CABLE LABELING

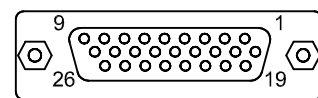



5. RJ-45 CONNECTOR
VIEW LOOKING INTO CONNECTOR



3. CABLE LENGTH
CAUTION, CABLE LENGTHS (XX) ARE IN DECIMETERS
EXAMPLE: C19891-3
3 = 3 DECIMETERS (300mm) = 1FT.

4. CONNECTOR VIEW FROM SOLDER SIDE.



<p>PROPRIETARY INFORMATION THIS DRAWING IS THE PROPERTY OF AEROTECH, INC. AND IS SUBMITTED IN CONFIDENCE AND SHALL NOT BE REPRODUCED NOR COPIED NOR DISCLOSED TO OTHERS UNDER PENALTY OF LAW.</p>			 <p>® AEROTECH, INC. 101 Zeta Drive Pittsburgh, PA. 15238 (412)963-7470 TWX710-795-3125</p>					
<p>TOLERANCES ON FRACTIONS DECIMALS ANGLES 0 TO 6 ±1/32 .XX ±.01 ± 0-30' OVER 6 ±1/16 .XXX ±.005</p>			<p style="text-align: center;">NDRIVE PSO ENCODER CABLE (AUX I/O TO SSINET1)</p>					
<p>RMS FINISH EXCEPT AS NOTED</p>								
DRAWN	EJB	3/28/03				PART CODE	SIZE	REV.
CHECKED	AGS	3/28/03				C19891	B	-
APPD.	AGS	3/28/03	SCALE	FILE NAME	SHEET			
			NTS	630B1989-1.DWG	1 of 1			
				630B1989-1				