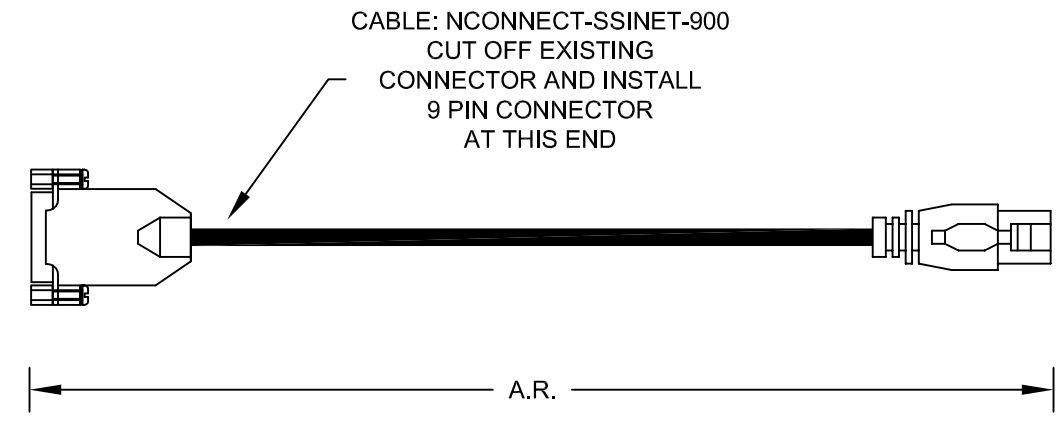
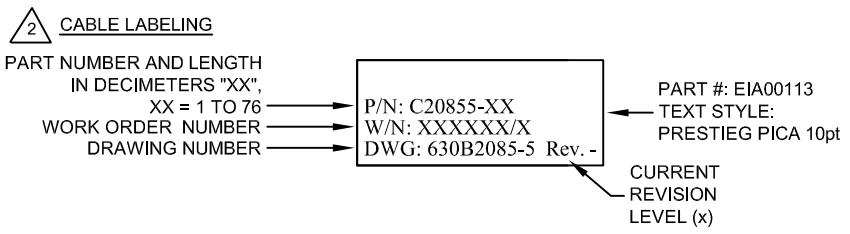
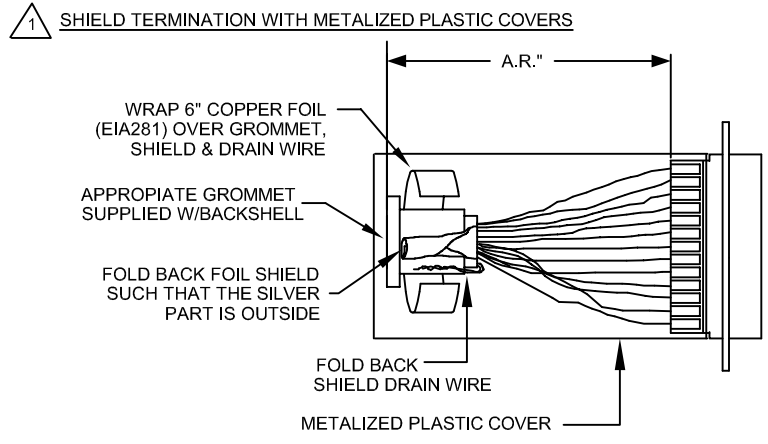


9 MALE, DE-9P, (ECK00137)  
BACKSHELL, (ECK01021)  
JACKSOCKET KIT, (ECK00129)  
SEE NOTE 4

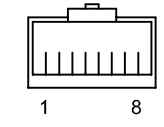
CONNECTOR PINOUT  
SHOWN FOR  
REF. ONLY.  
SEE NOTE 5

TO  
NDRIVE  
J302 OR J303  
(SSINET2)

REVISIONS				
REV.	ZONE	DESCRIPTION	DATE	DRAWN

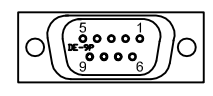


5. RJ-45 CONNECTOR  
VIEW LOOKING INTO CONNECTOR



3. CABLE LENGTH  
CAUTION, CABLE LENGTHS (XX) ARE IN DECIMETERS  
EXAMPLE: C20855-3  
3 = 3 DECIMETERS (300mm) = 1FT.

4. CONNECTOR VIEW FROM SOLDER SIDE.



PROPRIETARY INFORMATION  
THIS DRAWING IS THE PROPERTY  
OF AEROTECH, INC. AND IS  
SUBMITTED IN CONFIDENCE AND  
SHALL NOT BE REPRODUCED NOR  
COPIED NOR DISCLOSED TO OTHERS  
UNDER PENALTY OF LAW.



AEROTECH, INC. 101 Zeta Drive  
Pittsburgh, PA. 15238  
(412)963-7470  
www.aerotech.com

TOLERANCES ON		
FRACTIONS	DECIMALS	ANGLES
0 TO 6 ±1/32	.XX ±01	± 0-30'
OVER 6 ±1/16	.XXX ±005	

RMS FINISH EXCEPT AS NOTED

DRAWN	LTL	12-14-12
CHECKED	AGS	12-14-12
APPD.	AGS	12-14-12

PSO ENCODER CABLE  
CABLE: ENC SSI2-9DU-RJ45-MAX76DM  
WIRING DETAILS

PART CODE	SIZE	REV.
C20855-xx	B	-
SCALE NTS	FILE NAME	SHEET
	630B2085-501.DWG	1 OF 1

630B2085-5