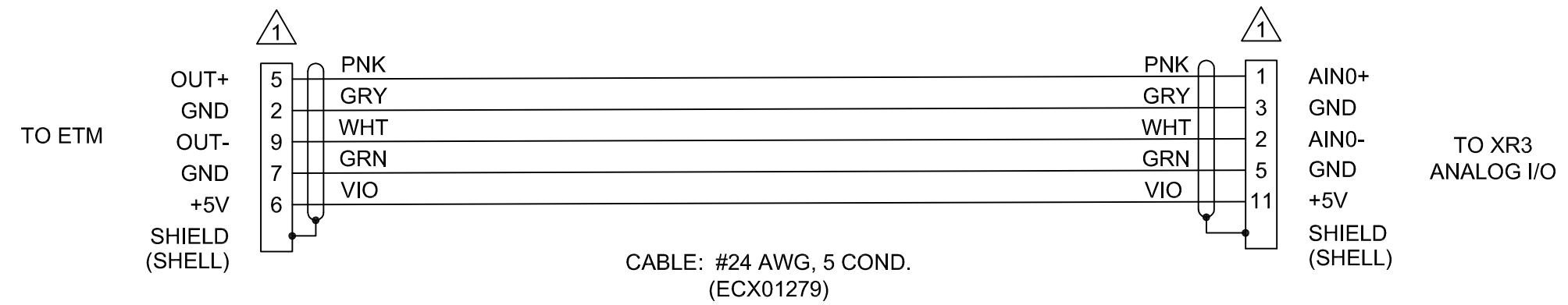
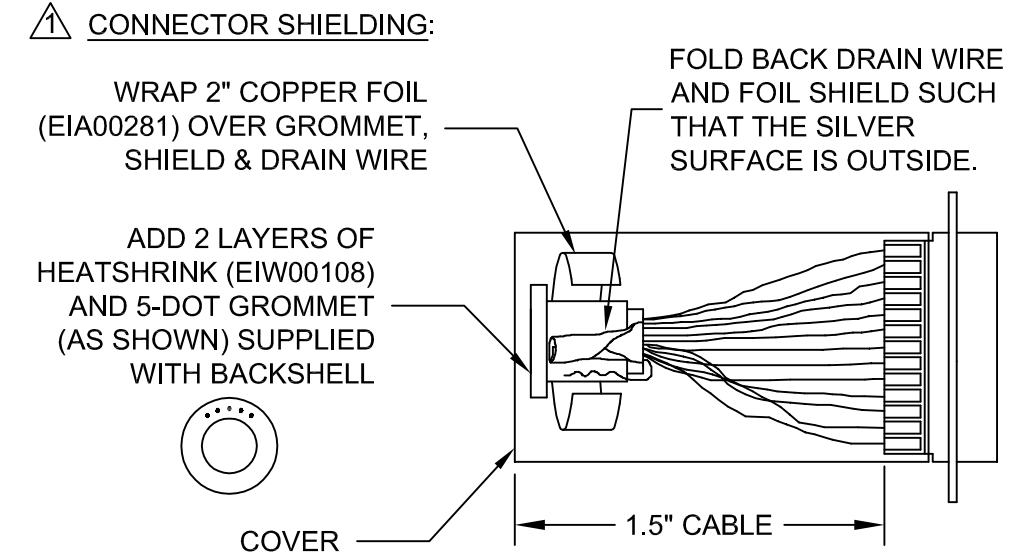


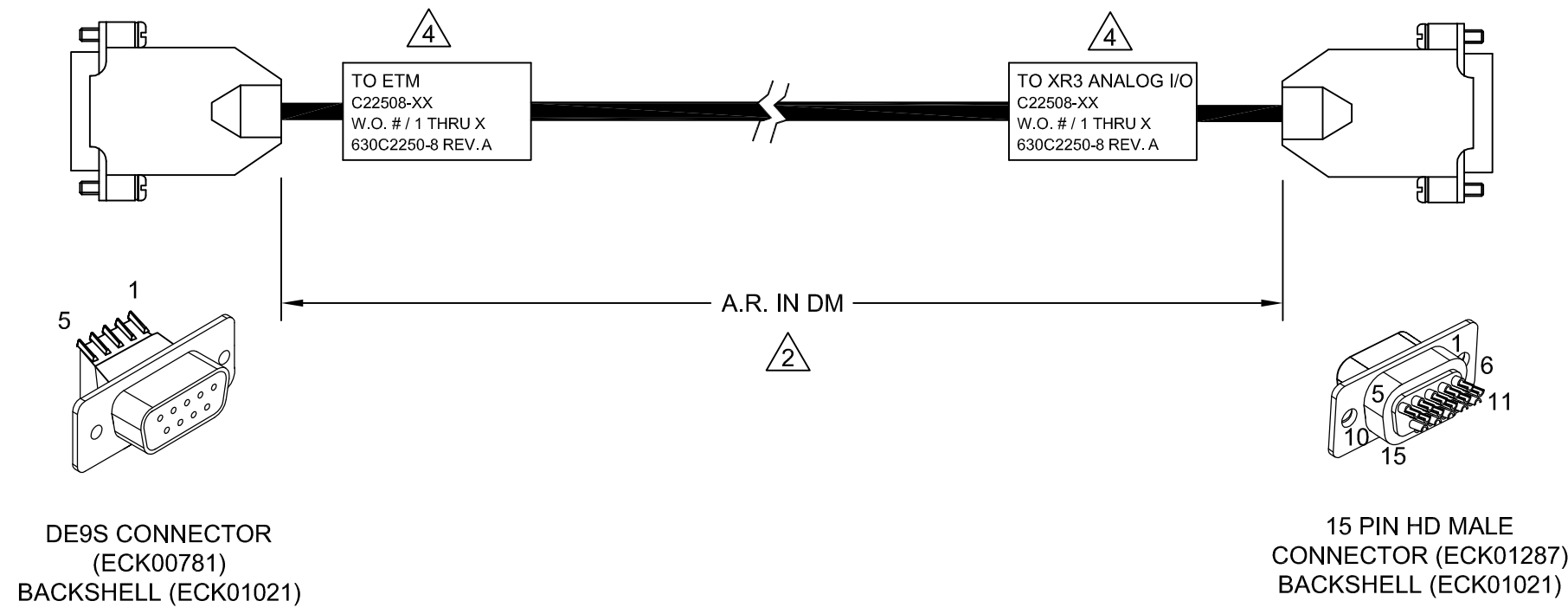
| REVISIONS |              |       |       |
|-----------|--------------|-------|-------|
| REV.      | DESCRIPTION  | DATE  | DRAWN |
| A         | INITIAL REV. | 12/18 | AF    |



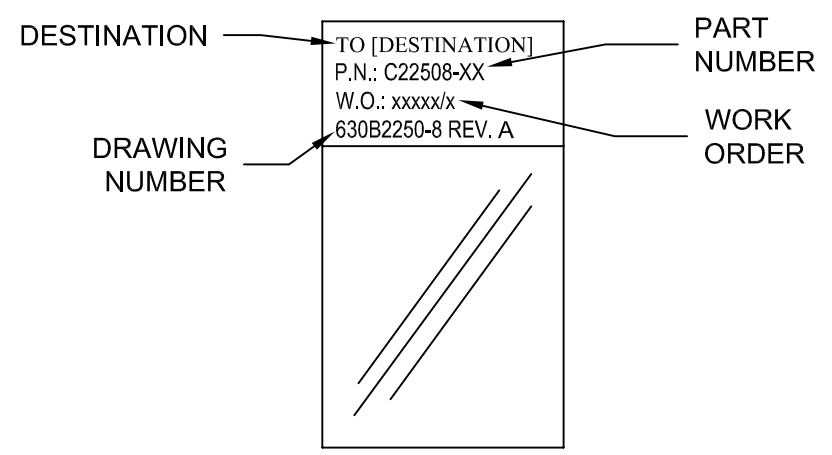
NOTES:



- 2) CABLE LENGTH  
CABLE LENGTHS (xx) ARE IN DECIMETERS  
EXAMPLE: FOR C22508-30, 30 = 30 DECIMETERS (3 METERS)
- 3.) ALL TOLERANCES ARE +/- .25".



4) CABLE WRAP LABEL (EIA00113):  
2 REQUIRED (1 AT EACH END). APPLY LABELS IN FLAG FASHION SO THAT ALL TEXT IS VISIBLE.



PROPRIETARY INFORMATION  
THIS DRAWING IS THE PROPERTY OF AEROTECH, INC. AND IS SUBMITTED IN CONFIDENCE AND SHALL NOT BE REPRODUCED NOR COPIED NOR DISCLOSED TO OTHERS UNDER PENALTY OF LAW.



AEROTECH, INC. 101 Zeta Drive  
Pittsburgh, PA. 15238  
412 963-7470 WWW.AEROTECH.COM

| TOLERANCES ON |           |         |
|---------------|-----------|---------|
| FRACTIONS     | DECIMALS  | ANGLES  |
| 0 TO 6 ±1/32  | .XX ±01   | ± 0-30' |
| OVER 6 ±1/16  | .XXX ±005 |         |

RMS FINISH  EXCEPT AS NOTED

## XR3 ANALOG I/O TO ETM ETM-15HD-9D-MAX100DM

|         |         |       |
|---------|---------|-------|
| DRAWN   | AF      | 12/18 |
| CHECKED | ZGK     | 12/18 |
| APPD.   | JFM, NR | 12/18 |

|            |                    |        |
|------------|--------------------|--------|
| PART CODE  | SIZE               | REV.   |
| C22508-XX  | B                  | A      |
| 630B2250-8 |                    |        |
| SCALE      | FILE NAME          | SHEET  |
| NTS        | 630B2250-8SHT1.DWG | 1 OF 1 |