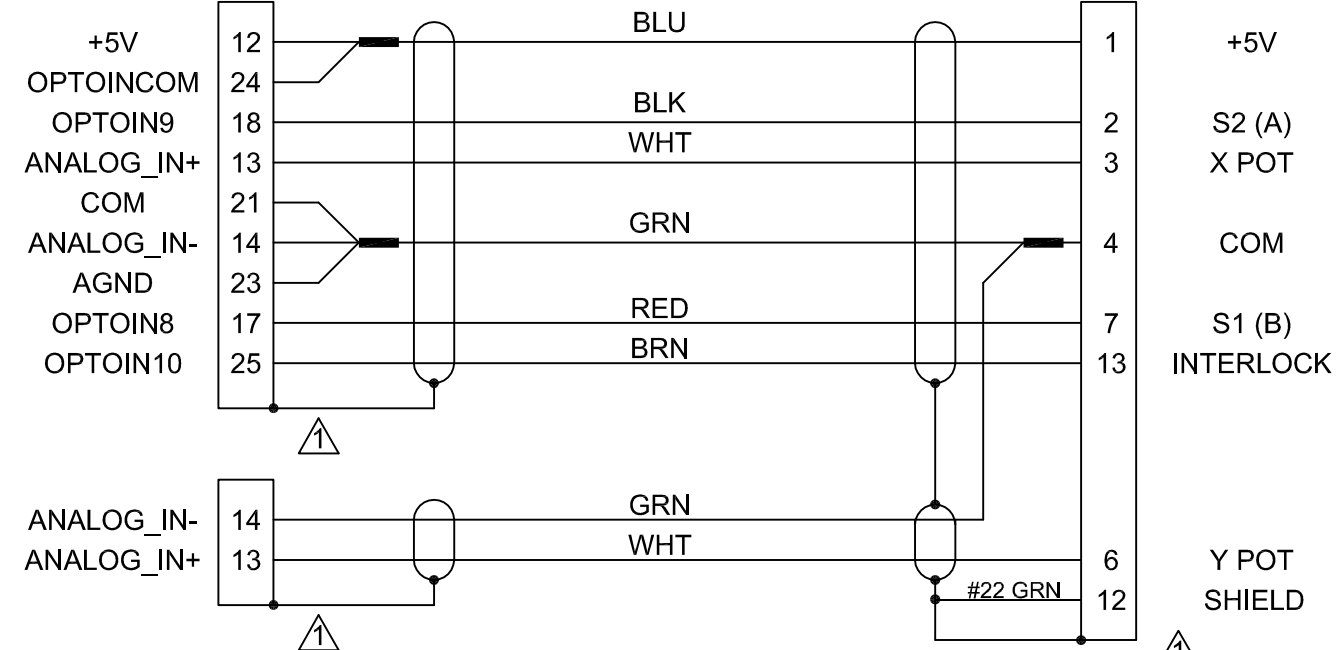


BACKSHELL, (ECK01022)
 JACKSOCKETS, (ECK00129)
 15 LINE FEMALE "D"
 ECK00326

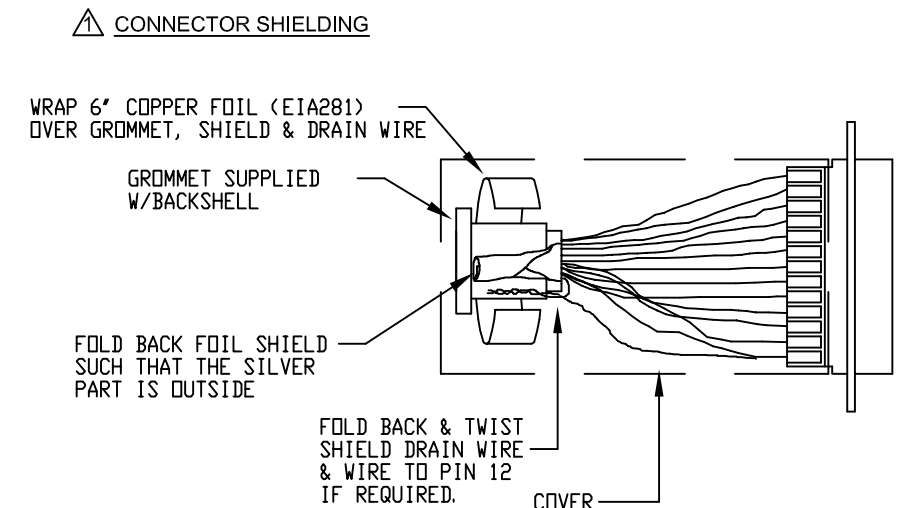
REVISIONS				
SYM.	ZONE	DESCRIPTION	DATE	APPROVAL
-		-	-	-

26 HD MALE, (ECK01259)
 BACKSHELL, (ECK01022)

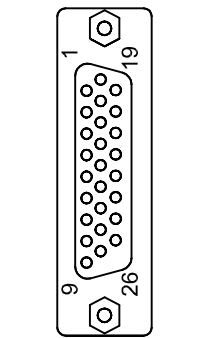


26 HD MALE, (ECK01259)
 BACKSHELL, (ECK01022)

TO
 JOYSTICK



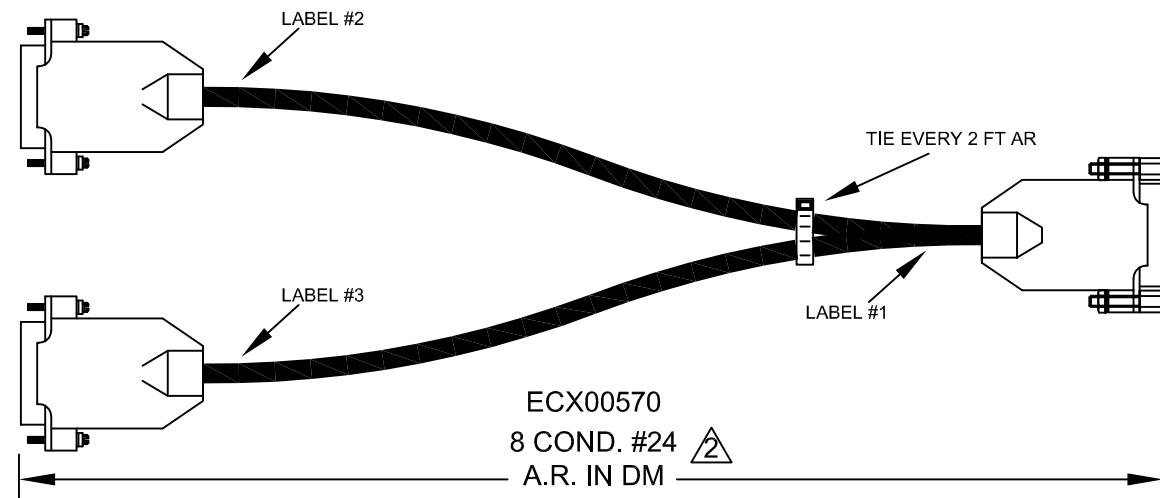
△ CABLE LENGTH
 CAUTION, CABLE LENGTHS (XX) ARE IN DECIMETERS
 EXAMPLE: C22755-30
 30 = 30 DECIMETERS (3 METERS) = 10FT.



VIEW FROM
 SOLDER SIDE

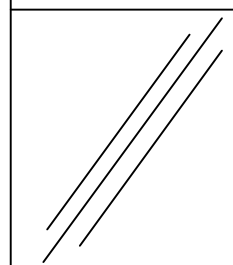
TO
 NDRIVE CP #1
 J104 AUX IO

TO
 NDRIVE CP #2
 J104 AUX IO



LABEL #1 FOR
 C22755-CABLES:
 (1) REQUIRED

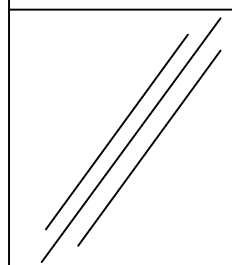
C22755-XX
 W. O. # / 1 thru X
 630B2275-5 REV(X)



CABLE WRAP LABEL: EIA00113

LABEL #2 FOR
 C22755-CABLES:
 (1) REQUIRED

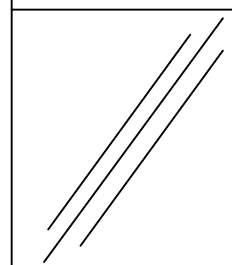
TO: NDRIVECP #1
 AUX IO PORT



CABLE WRAP LABEL: EIA00113

LABEL #3 FOR
 C22755-CABLES:
 (1) REQUIRED

TO: NDRIVECP #2
 AUX IO PORT



CABLE WRAP LABEL: EIA00113

PROPRIETARY INFORMATION
 THIS DRAWING IS THE PROPERTY
 OF AEROTECH, INC. AND IS
 SUBMITTED IN CONFIDENCE AND
 SHALL NOT BE REPRODUCED NOR
 COPIED NOR DISCLOSED TO OTHERS
 UNDER PENALTY OF LAW.



AEROTECH, INC. 101 Zeta Drive
 Pittsburgh, PA. 15238
 www.aerotech.com

TOLERANCES ON		
FRACTIONS	DECIMALS	ANGLES
0 TO 6 ±1/32	.XX ±01	± 0-30'
OVER 6 ±1/16	.XXX ±005	

RMS FINISH EXCEPT AS NOTED

DRAWN	TES	9/9/09
CHECKED	EJB	9/9/09
APPD.	AGS	9/9/09

**NDRIVE CP DUAL AXIS
 JOYSTICK EXTENSION CABLE
 (JSXT-26HD 26HD-15DU-MAX 300 DM)**

PART CODE	SIZE	REV.
C22755-XX	B	-
SCALE NTS	FILE NAME	SHEET
	630B2275-501.DWG	1 of 1

630B2275-5