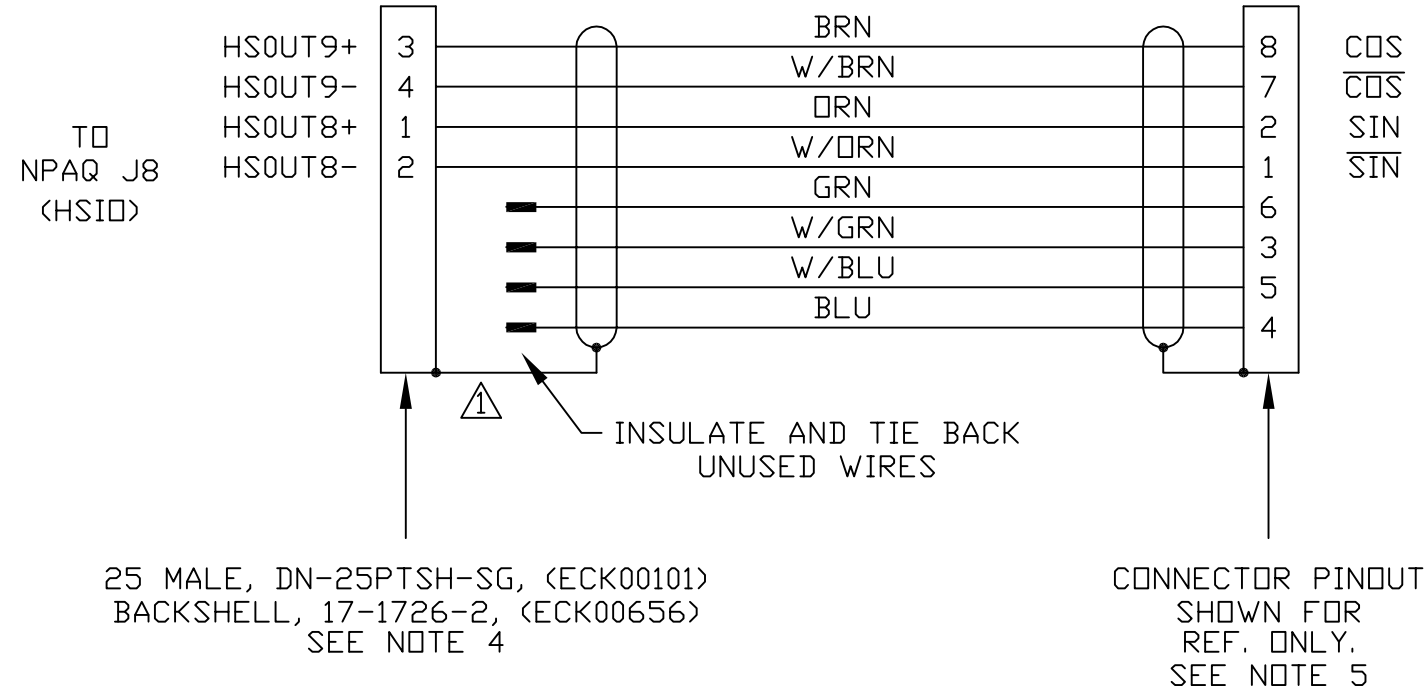
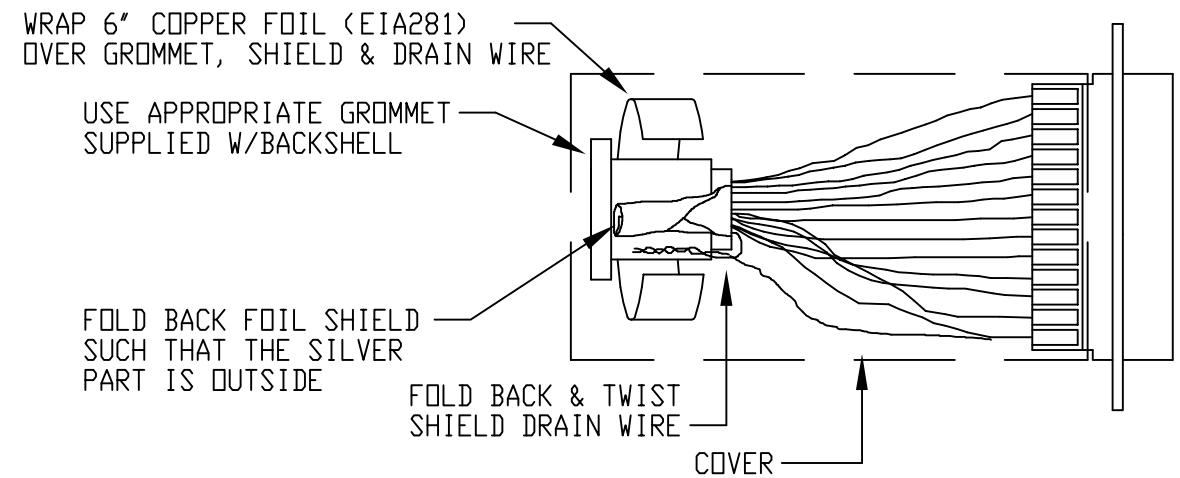


REVISIONS				
REV.	ZONE	DESCRIPTION	DATE	DRAWN

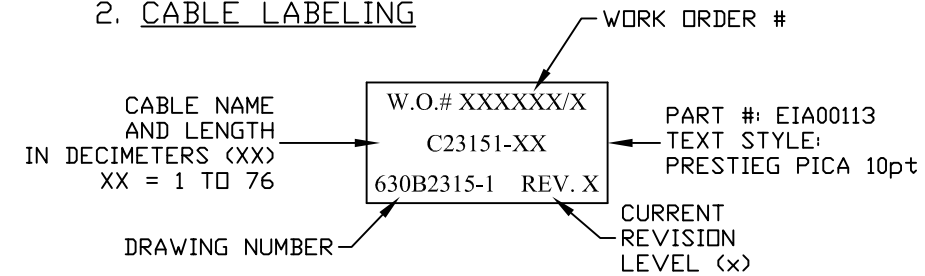
CABLE #TRD855SCR
LENGTH A.R.
SEE NOTE 3.



CONNECTOR SHIELDING



2. CABLE LABELING



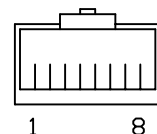
CABLE #TRD855SCR
CUT OFF EXISTING
CONNECTOR AND INSTALL
25 PIN CONNECTOR
AT THIS END



A.R.

5. RJ-45 CONNECTOR

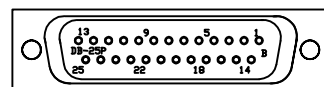
VIEW LOOKING INTO CONNECTOR



3. CABLE LENGTH

CAUTION, CABLE LENGTHS (XX) ARE IN DECIMETERS
EXAMPLE: C23151-3
3 = 3 DECIMETERS (300mm) = 1FT.

4. CONNECTOR VIEW FROM SOLDER SIDE.



PART CODE:

C23151-X	C23151-1 TO -76 MAX LENGTH (DECIMETERS)
----------	---

PROPRIETARY INFORMATION
THIS DRAWING IS THE PROPERTY
OF AEROTECH, INC. AND IS
SUBMITTED IN CONFIDENCE AND
SHALL NOT BE REPRODUCED NOR
COPIED NOR DISCLOSED TO OTHERS
UNDER PENALTY OF LAW.



AEROTECH, INC. 101 Zeta Drive
Pittsburgh, PA. 15238
(412)963-7470
www.aerotech.com

TOLERANCES ON		
FRACTIONS	DECIMALS	ANGLES
0 TO 6 ± 1/32	.XX ± .01	± 0-30'
OVER 6 ± 1/16	.XXX ± .005	

RMS FINISH	EXCEPT AS NOTED
------------	-----------------

DRAWN	8-31-2010	LTL
CHECKED	8-31-2010	LTL

**NPAQ HSIO1 TO SSINET1
(MAX LENGTH 76 DECIMETERS)
CABLE: ENC SSI1-25DU-RJ45-MAX76DM**

PART CODE	SIZE	REV.
SEE ABOVE	B	-
630B2315-1		