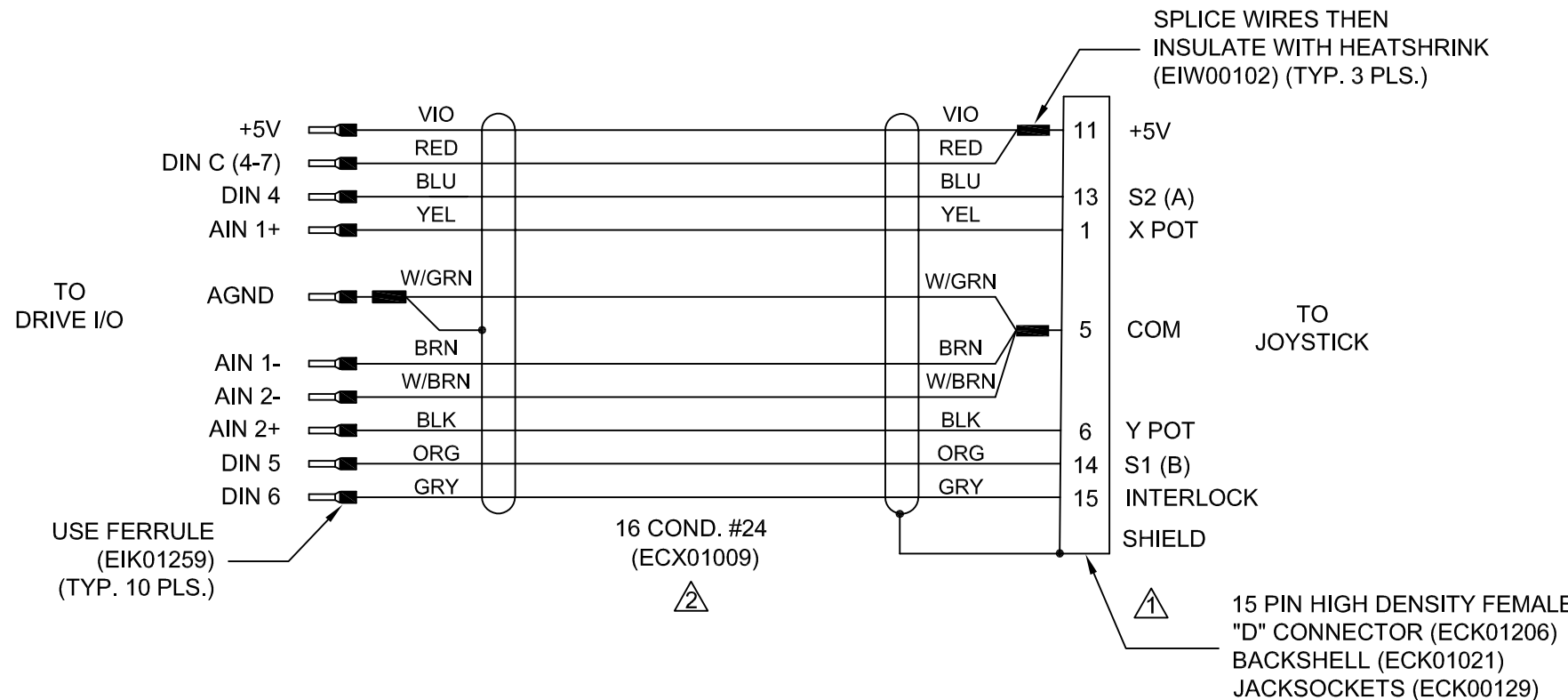


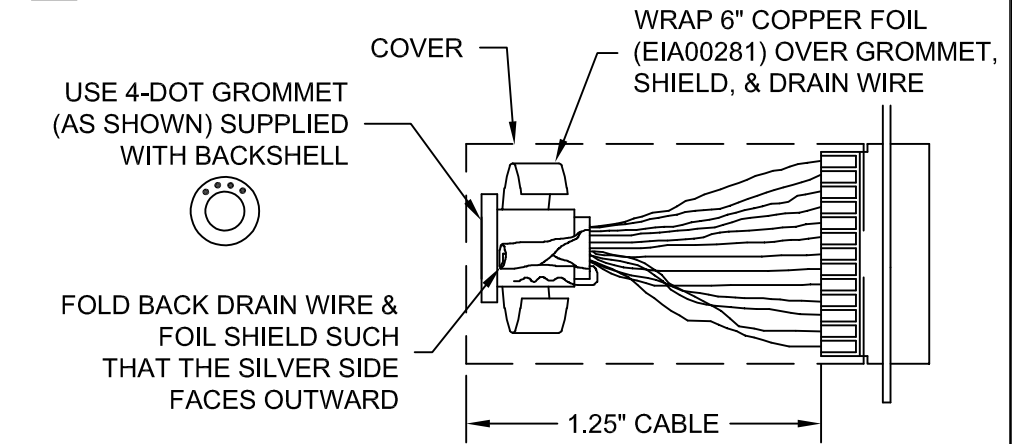
REVISIONS

REV.	DESCRIPTION	DATE	DRAWN
A	INITIAL REV.	12/18	AF



NOTES:

⚠️ CONNECTOR SHIELDING

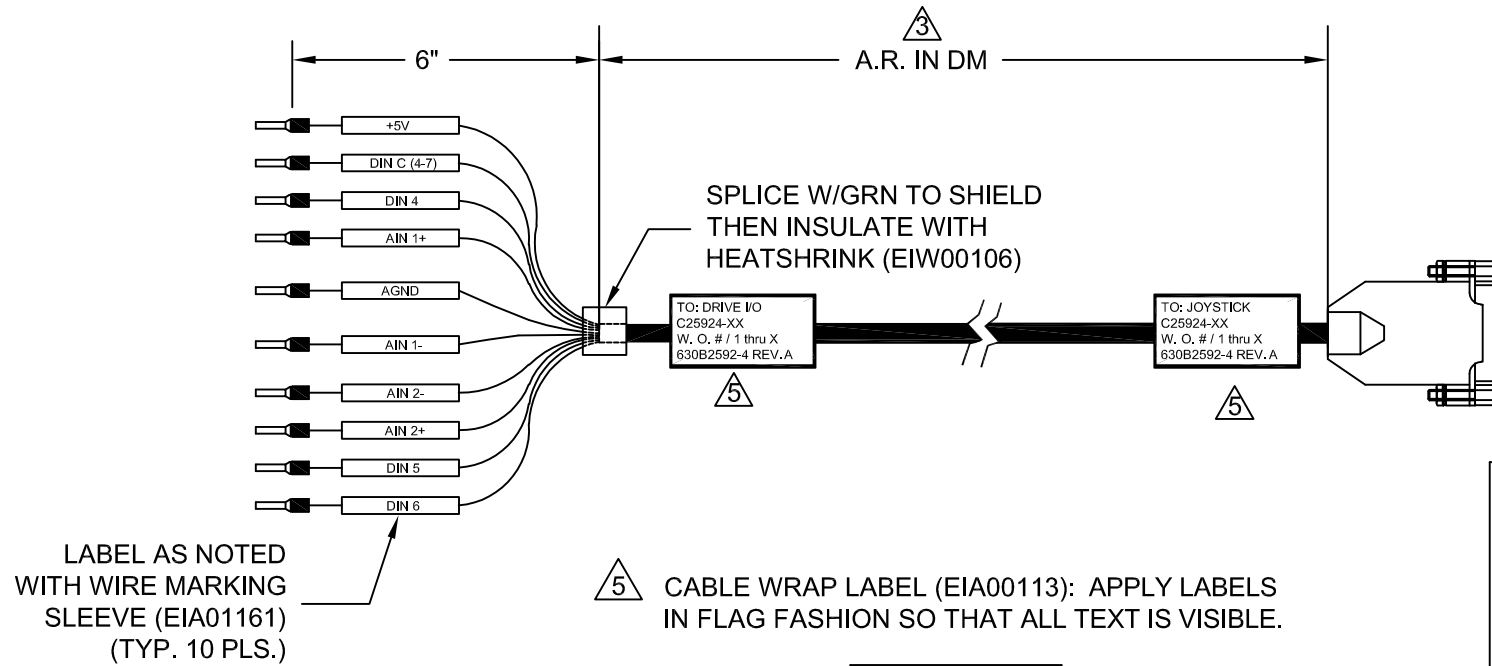


⚠️ UNUSED WIRES: GRN, WHT, WHT/YEL, WHT/BLU, WHT/ORG, WHT/GRY

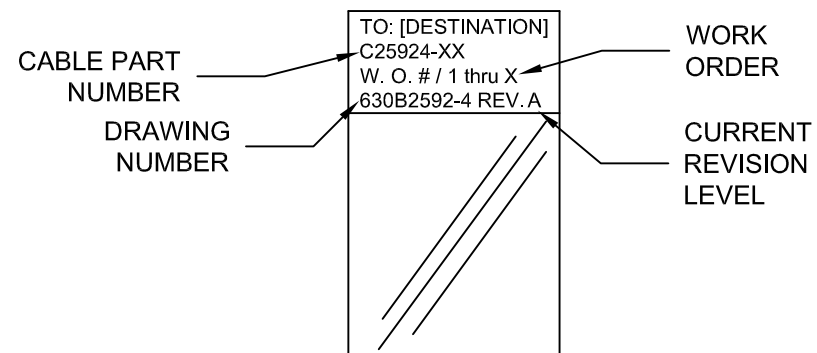
⚠️ CABLE LENGTH

CAUTION, CABLE LENGTHS (XX) ARE IN DECIMETERS
EXAMPLE: PART NO. C25924-30 IS 30 DECIMETERS (3 METERS) = 10FT.

4.) ALL TOLERANCES ARE +/- .25"



⚠️ CABLE WRAP LABEL (EIA00113): APPLY LABELS IN FLAG FASHION SO THAT ALL TEXT IS VISIBLE.



PROPRIETARY INFORMATION
THIS DRAWING IS THE PROPERTY OF AEROTECH, INC. AND IS SUBMITTED IN CONFIDENCE AND SHALL NOT BE REPRODUCED NOR COPIED NOR DISCLOSED TO OTHERS UNDER PENALTY OF LAW.



AEROTECH, INC. 101 Zeta Drive
Pittsburgh, PA. 15238
www.aerotech.com

TOLERANCES ON		
FRACTIONS	DECIMALS	ANGLES
0 TO 6 $\frac{1}{32}$.XX ± 01	$\pm 0-30'$
OVER 6 $\frac{1}{16}$.XXX ± 005	

RMS FINISH	EXCEPT AS NOTED
------------	-----------------

DRAWN	AF	12/18
CHECKED	ZGK	12/18
APPD.	JFM, NR	12/18

XC4/XC5 SINGLE-AXIS DRIVE WITH I/O BD. JOYSTICK CABLE JSXT-FLY-15HDJS-MAX300DM				PART CODE	SIZE	REV.
				C25924	B	A
SCALE	NTS	FILE NAME	630B2592-4SHT1.DWG	SHEET	1 of 1	