

REVISIONS				
REV.	ZONE	DESCRIPTION	DATE	DRAWN
A		CHANGED NOMENCLATURE, ADDED DETAIL	3/88	MP
A1		CORRECTED PART NUMBER	3/92	LTR
B		ADDED ECN2961	10/17/97	NTC
C		ADDED ECN6974	05/03	JRF
D		ADDED ECN7492	12/8/03	EJB
E		ADDED ECN11264	07/08	JRF

CONNECTOR 25 PIN D MALE AMP #745496-2 (ECK00786)  
BACKSHELL #17-1726-2 (ECK00656)

PIN	WIRE	SIGNAL
13	ORN	BRK-/CW LMT
12	WHT	CW/+ LMT
11	-	-
10	-	-
9	-	-
8	-	-
7	BRN	MKR
6	BLK	MKR-N
5	-	-
4	-	-
3	#22 WHT/BRN	ENC +5V
2	-	-
1	SHIELD	SIG SHLD
14	WHT/RED	COS
15	VIO	COS-N
16	#22 WHT/BLU	LMT +5V
17	GRN	SIN
18	RED	SIN-N
19	-	-
20	#22 WHT/GRN	LMT COM
21	#22 WHT/YEL	ENC COM
22	PINK	HM LMT
23	YEL	HOME LMT
24	GRY	CCW/- LMT
25	BLU	BRK+/CCW LMT

PIN	WIRE	SIGNAL	
		BIPOLAR	UNIPOLAR
14	-	-	-
13	-	-	-
12	-	-	-
11	-	-	-
10	-	-	-
9	-	-	-
8	SHIELD	MTR SHLD	MTR SHLD
7	#20 RED	MTR A-N	MTR A'
6	#20 BLU	-	MTR B'
5	#20 ORN	-	MTR A
4	#20 YEL	MTR B	MTR B
3	#20 WHT	MTR B-N	MTR BCT
2	#20 BRN	MTR A	MTR ACT
1	#20 GRN	FRM GND	FRM GND

AMP PLUG #206044-1 (ECK00131)  
BACKSHELL #206070-1 (ECK00134)  
#20-24 PINS #66102-7 (EIK00192) QTY 8

682A1031 (ECX00445)  
#24 AWG UNLESS OTHERWISE NOTED

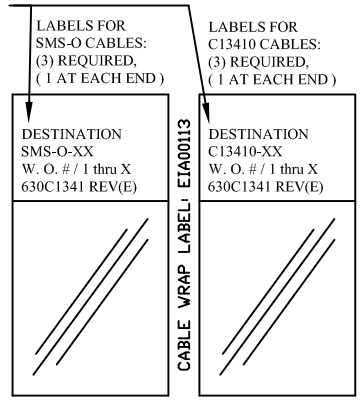
SIGNAL	WIRE	PIN
SIN-N	RED	H
CCW LMT/BRK+	BLU	J
SIN	GRN	G
HOME LMT	YEL	K
HM LMT	PINK	W
CCW/- LMT	GRY	V
CW/+LMT	WHT	U
COS-N	VIO	F
MKR	BRN	L
MKR-N	BLK	X
SIG SHLD	#22 GRN/YEL	Z
CW LMT/BRK-	ORN	T
COS	WHT/RED	E
ENC +5V	#22 WHT/BRN	M(1/2)
LMT +5V	#22 WHT/BLU	M(2/2)
MTR SHLD	#22 GRN/YEL	Y
MTR A	#20 BRN	R *
FRM GND	#20 GRN	S *
LMT COM	#22 WHT/GRN	D(1/2)
ENC COM	#22 WHT/YEL	D(2/2)
MTR B	#20 YEL	N *
MTR B'	#20 BLU	P *
MTR B-N	#20 WHT	A *
MTR A	#20 ORN	B *
MTR A-N	#20 RED	C *

BIPOLAR UNIPOLAR

BURNDY PLUG #UTG618-23SN (ECK00135)  
CLAMP BURNDY #UTG18AC (ECK00617)

#28-22 SOCKETS BURNDY #SC24M-1TK6 (ECK00402)  
CRIMP TOOL: BURNDY HANDLE W/HEAD ASSY N20RT-29  
OR BURNDY CRIMPER MODEL UTM-2R W/HEAD ASSY CM11G1R  
\* #20-16 SOCKETS BURNDY #SC16M-1TK6 (ECK00403)  
CRIMP TOOL: BURNDY HANDLE W/HEAD ASSY N16RT-24

SEE LABELS 1, 2 & 3 FOR DESTINATION



ACTIVE HIGH SIGNALS FOR USE WITH PREVIOUS GENERATION AEROTECH CONTROLLERS (UNIDEX, UNIDEX 2, UNIDEX 3, UNIDEX 11, UNIDEX 12, UNIDEX 16)  
USE 2" LENGTHS OF THICK WALL HEATSHRINK TUBING TO BUILD UP CABLE DIAMETER FOR PROPER STRAIN RELIEFING. STRAIN RELIEFING MUST WITHSTAND 35 LB. PULL.

CUT THICK WALL HEATSHRINK TUBING WITH CABLE CUTTER SUCH THAT ENDS ARE PERPENDICULAR TO CABLE AND CUT IS SMOOTH.  
THICK WALL HEATSHRINK TUBING:  
AMP # 53701-1 (EIW00112) MAX INSIDE DIA = .750" (EXPANDED), MIN INSIDE DIA = .220" (RECOVERED)  
AMP # 53700-1 (EIW00113) MAX INSIDE DIA = .400" (EXPANDED), MIN INSIDE DIA = .150" (RECOVERED)

STARTING CABLE LENGTH = A. R. LENGTH + 5 IN.

UNUSED WIRES: WHT/BLK, WHT/VIO

UNUSED WIRES: NONE

INNER BUNDLE OF 682A1031

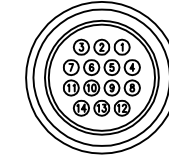
FOR CRIMP TOOL USE AMP HANDLE ASSY 58074-1 WITH AMP HEAD ASSY 58063-2

FOR CRIMP TOOL USE AMP HANDLE ASSY 90277-1 OR USE AMP CRIMPER MODEL #565435-5 WITH AMP HEAD ASSY 66102-2



DETAIL "A"

AMP PLUG 745496-2 (ECK00786)  
VIEWED FROM WIRE SIDE OF CONNECTOR



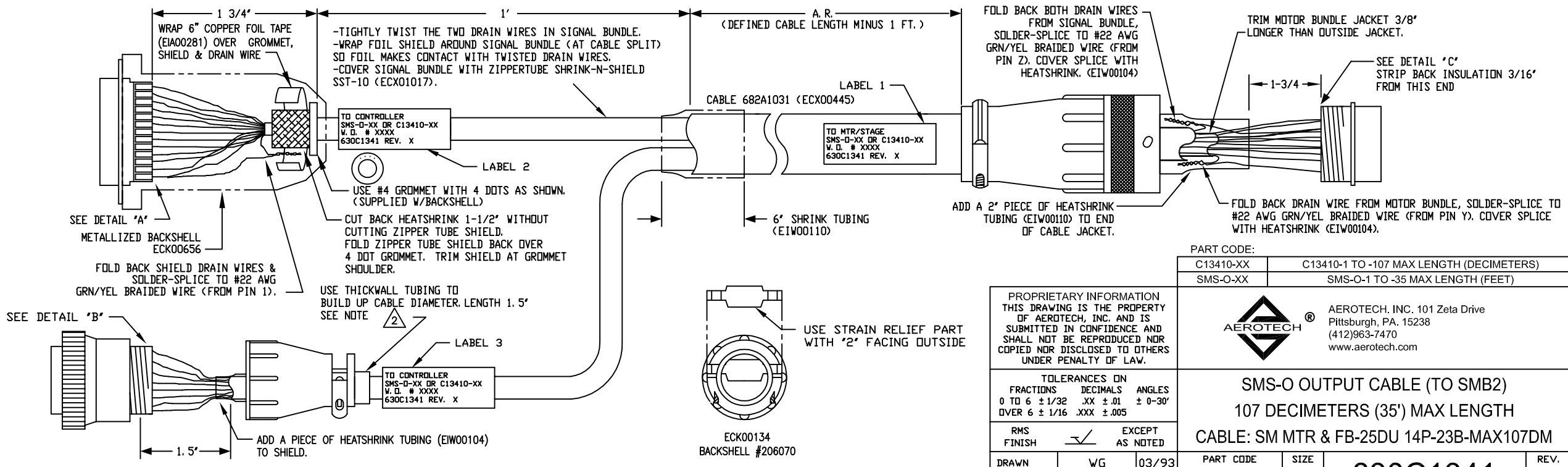
DETAIL "B"

AMP PLUG 206044-1 (ECK00131)  
VIEWED FROM WIRE SIDE OF CONNECTOR



DETAIL "C"

BURNDY PLUG UTG618-23SN (ECK00135)  
VIEWED FROM WIRE SIDE OF CONNECTOR



PART CODE:	
C13410-XX	C13410-1 TO -107 MAX LENGTH (DECIMETERS)
SMS-O-XX	SMS-O-1 TO -35 MAX LENGTH (FEET)

PROPRIETARY INFORMATION THIS DRAWING IS THE PROPERTY OF AEROTECH, INC. AND IS SUBMITTED IN CONFIDENCE AND SHALL NOT BE REPRODUCED NOR COPIED NOR DISCLOSED TO OTHERS UNDER PENALTY OF LAW.



AEROTECH, INC. 101 Zeta Drive  
Pittsburgh, PA. 15238  
(412)963-7470  
www.aerotech.com

SMS-O OUTPUT CABLE (TO SMB2)  
107 DECIMETERS (35') MAX LENGTH

CABLE: SM MTR & FB-25DU 14P-23B-MAX107DM

TOLERANCES ON FRACTIONS DECIMALS ANGLES		
0 TO 6 ± 1/32	.XX ± .01	± 0-30'
OVER 6 ± 1/16	.XXX ± .005	
RMS FINISH	EXCEPT AS NOTED	
DRAWN	WG	03/93
CHECKED	AGS	10/97
APPD.	AGS	10/97

PART CODE	SIZE	REV.
SEE ABOVE	C	E
SCALE NTS	FILE NAME	SHEET
	630C1341E1.dwg	1 OF 1