

REVISIONS				
REV.	ZONE	DESCRIPTION	DATE	DRAWN
A		WHT/BLK WAS BLK/BRN, WHT/RED WAS BLK/RED, WHT/VIO WAS BLK/DRN	1/92	LTR
B		ADDED ECN 2832	8/21/97	NTC
C		ADDED ECN7057	05/03	JRF

AMP PLUG #745496-2 (ECK786)
BACKSHELL #17-1726-2 (ECK656)
682A1031 (ECX445)
#24 AWG UNLESS OTHERWISE NOTED

STR. PLUG MS3106A-24 (MCM466) (STD)
ANGLE PLUG MS3108A-24 (DPT.)
ANGLE PLUG MS3108B-24 (DPT.)
INSERT MS24-28S (MCM469)
CLAMP AN3057-16 (MCM467)
BUSHING AN3055-28-16 (MCM474)

#24 AWG UNLESS OTHERWISE NOTED

PIN	WIRE	SIGNAL
13	ORN	BRK-
12	WHT	CW/+ LMT
11	-	-
10	-	-
9	-	-
8	WHT/VIO	TACH -
7	BRN	MKR
6	BLK	MKR-N
5	-	-
4	-	-
3	#22 WHT/BRN	ENC +5V
2	-	-
1	SHIELD	SIG SHLD
14	WHT/BLK	COS
15	VIO	COS-N
16	#22 WHT/BLU	LMT +5V
17	GRN	SIN
18	RED	SIN-N
19	WHT/RED	TACH+
20	#22 WHT/GRN	LMT COM
21	#22 WHT/YEL	ENC COM
22	PINK	HM LMT
23	-	-
24	GRY	CCW/- LMT
25	BLU	BRK+

SIGNAL	WIRE	PIN
LMT +5V	#22 WHT/BLU	W
LMT COM	#22 WHT/GRN	X
TACH+	WHT/RED	Y
TACH-	WHT/VIO	Z
CW/+ LMT	WHT	R
CCW/- LMT	GRY	S
HM LMT	PINK	T
BRK-	ORN	U
MTR-	#20 YEL	V
COS-N	VIO	K
SIN-N	RED	L
MKR-N	BLK	M
FRM GND	#20 GRN	N(1/2)
FRM GND	#20 WHT	N(2/2)
MTR+	#20 ORN	P
MTR-	#20 BLU	Q
COS	WHT/BLK	E
SIN	GRN	F
MKR	BRN	G
BRK+	BLU	H
MTR+	#20 RED	J
ENC+5V	#22 WHT/BRN	A
ENC COM	#22 WHT/YEL	B
SIG SHLD	SHIELD	C
MTR SHLD	SHIELD	D

PIN	WIRE	SIGNAL
14	-	-
13	-	-
12	-	-
11	-	-
10	-	-
9	-	-
8	SHIELD	MTR SHLD
7	#20 RED	MTR+
6	#20 BLU	MTR-
5	#20 DRN	MTR+
4	#20 YEL	MTR-
3	-	-
2	-	-
1(2/2)	#20 WHT	FRM GND
1(1/2)	#20 GRN	FRM GND

UNUSED WIRES:
YEL

UNUSED WIRES:
#20 BRN

INNER BUNDLE OF 682A1031

FOR CRIMP TOOL USE AMP HANDLE ASSY 58074-1 WITH AMP HEAD ASSY 58063-2

FOR CRIMP TOOL USE AMP HANDLE ASSY 90277-1 OR USE AMP CRIMPER MODEL #565435-5 WITH AMP HEAD ASSY 66102-2

PIN 1 EIK194 ONLY

AMP PLUG #206044-1 (ECK131)
BACKSHELL #206070-1 (ECK134)
#18-24 PINS #66102-7 (EIK192) QTY 5
#16-18 PIN #66098-7 (EIK194) QTY 1

AMP PLUG 745496-2 (ECK786)
VIEWED FROM WIRE SIDE OF CONNECTOR

AMP PLUG 206044-1 (ECK131)
VIEWED FROM WIRE SIDE OF CONNECTOR

INSERT MS24-28S (MCM469)
VIEWED FROM WIRE SIDE OF CONNECTOR

DETAIL "A"

DETAIL "B"

DETAIL "C"

2

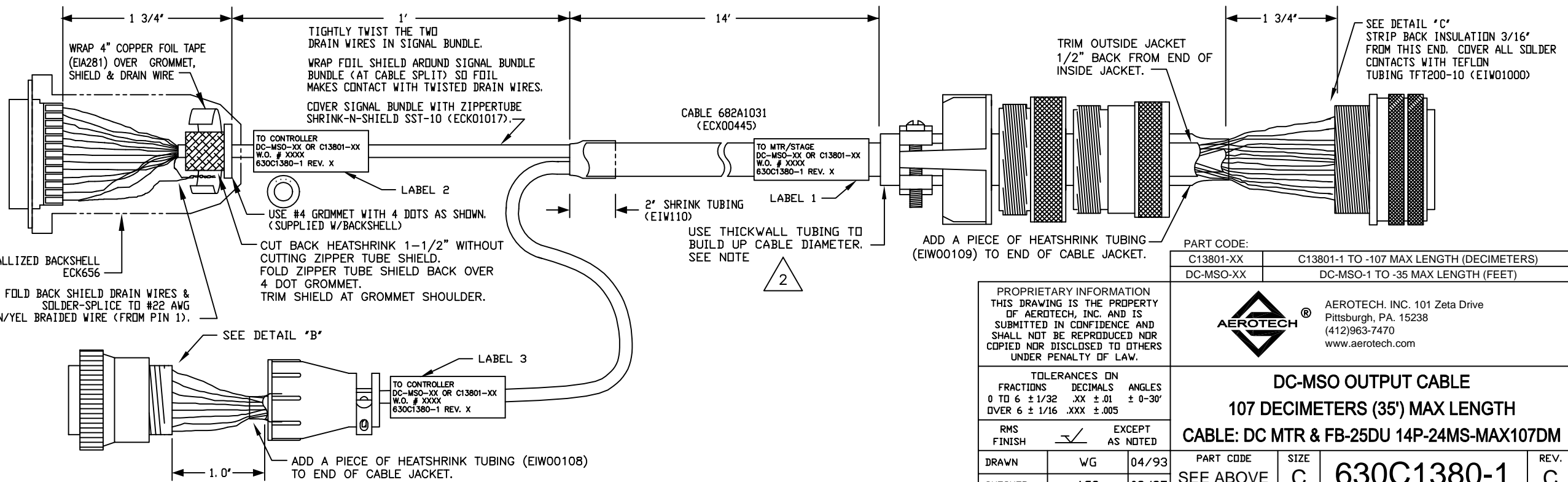
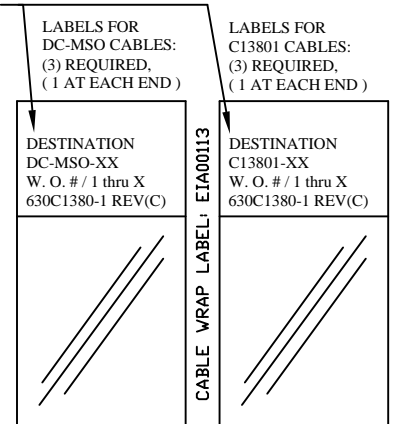
1

USE 2" LENGTHS OF THICK WALL HEATSHRINK TUBING TO BUILD UP CABLE DIAMETER FOR PROPER STRAIN RELIEFING. STRAIN RELIEFING MUST WITHSTAND 35 LB. PULL.

CUT THICK WALL HEATSHRINK TUBING WITH CABLE CUTTER SUCH THAT ENDS ARE PERPENDICULAR TO CABLE AND CUT IS SMOOTH. THICK WALL HEATSHRINK TUBING:
AMP # 53701-1 (EIW00112) MAX INSIDE DIA = .750" (EXPANDED), MIN INSIDE DIA = .220" (RECOVERED)
AMP # 53700-1 (EIW00113) MAX INSIDE DIA = .400" (EXPANDED), MIN INSIDE DIA = .150" (RECOVERED)

STARTING CABLE LENGTH = 15 FT 5 IN

SEE LABELS 1, 2 & 3 FOR DESTINATION



PROPRIETARY INFORMATION
THIS DRAWING IS THE PROPERTY OF AEROTECH, INC. AND IS SUBMITTED IN CONFIDENCE AND SHALL NOT BE REPRODUCED NOR COPIED NOR DISCLOSED TO OTHERS UNDER PENALTY OF LAW.



AEROTECH, INC. 101 Zeta Drive
Pittsburgh, PA. 15238
(412)963-7470
www.aerotech.com

TOLERANCES ON		
FRACTIONS	DECIMALS	ANGLES
0 TO 6 ± 1/32	.XX ± .01	± 0-30'
OVER 6 ± 1/16	.XXX ± .005	
RMS FINISH	EXCEPT AS NOTED	

PART CODE:	
C13801-XX	C13801-1 TO -107 MAX LENGTH (DECIMETERS)
DC-MSO-XX	DC-MSO-1 TO -35 MAX LENGTH (FEET)

DC-MSO OUTPUT CABLE				
107 DECIMETERS (35') MAX LENGTH				
CABLE: DC MTR & FB-25DU 14P-24MS-MAX107DM				
DRAWN	WG	04/93	PART CODE	SIZE
CHECKED	AGS	08/97	SEE ABOVE	C
APPD.	AGS	08/97	SCALE NTS	FILE NAME 630C1380-1C1.dwg
			SHEET	1 OF 1