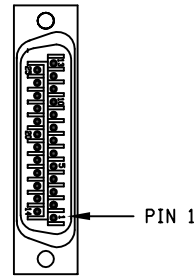


REVISIONS			
REV.	ZONE	DESCRIPTION	DRAWN

FOR CRIMP TOOL USE AMP HANDLE ASSY 58074-1 WITH AMP HEAD ASSY 58063-2



DETAIL "A"

AMP PLUG 745496-2 (ECK786)  
VIEWED FROM WIRE SIDE OF CONNECTOR

PIN	WIRE	SIGNAL
13	ORN	BRK-
12	WHT	CW/+ LMT
11	-	-
10	-	-
9	-	-
8	WHT/VIO	TACH -
7	BRN	MKR
6	BLK	MKR-N
5	-	-
4	-	-
3	#22 WHT/BRN	ENC +5V
2	-	-
1	SHIELD	SIG SHLD
14	WHT/BLK	COS
15	VIO	COS-N
16	#22 WHT/BLU	LMT +5V
17	GRN	SIN
18	RED	SIN-N
19	WHT/RED	TACH+
20	#22 WHT/GRN	LMT COM
21	#22 WHT/YEL	ENC COM
22	PINK	HM LMT
23	-	-
24	GRY	CCW/- LMT
25	BLU	BRK+

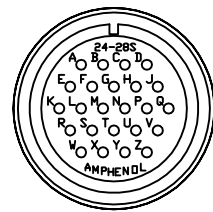
UNUSED WIRES:  
YEL

#24 AWG UNLESS OTHERWISE NOTED

STR. PLUG MS3106A-24 (MCM466) (STD)  
INSERT MS24-28S (MCM469)  
CLAMP AN3057-16 (MCM467)  
BUSHING AN3055-28-16 (MCM474)

SIGNAL	WIRE	PIN
LMT +5V	#22 WHT/BLU	W
LMT COM	#22 WHT/GRN	X
TACH+	WHT/RED	Y
TACH-	WHT/VIO	Z
CW/+ LMT	WHT	R
CCW/- LMT	GRY	S
HM LMT	PINK	T
BRK-	ORN	U
MTR-	#20 WHT	V
COS-N	VIO	K
SIN-N	RED	L
MKR-N	BLK	M
FRM GND	#20 GRN	N(1/2)
FRM GND	#20 BRN	N(2/2)
MTR+	#20 YEL	P
MTR-	#20 ORN	Q
COS	WHT/BLK	E
SIN	GRN	F
MKR	BRN	G
BRK+	BLU	H
MTR+	#20 BLU	J
ENC+5V	#22 WHT/BRN	A
ENC COM	#22 WHT/YEL	B
SIG SHLD	SHIELD	C
MTR SHLD	SHIELD	D

INNER BUNDLE  
OF 682A1031

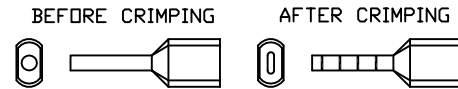


DETAIL "B"

INSERT MS24-28S (MCM469)  
VIEWED FROM WIRE SIDE OF CONNECTOR



FERRULE CRIMPING:  
DUE TO THE SMALL SIZE OF THE MP POWER CONNECTORS,  
TWIN TYPE FERRULES SHOULD BE CRIMPED AS SHOWN BELOW.



USE 2' LENGTHS OF THICK WALL HEATSHRINK TUBING TO  
BUILD UP CABLE DIAMETER FOR PROPER STRAIN RELIEVING.  
STRAIN RELIEVING MUST WITHSTAND 35 LB. PULL.

CUT THICK WALL HEATSHRINK TUBING WITH CABLE CUTTER  
SUCH THAT ENDS ARE PERPENDICULAR TO CABLE AND CUT  
IS SMOOTH. THICK WALL HEATSHRINK TUBING:

AMP # 53701-1 (EIW00112) MAX INSIDE DIA = .750' (EXPANDED),  
MIN INSIDE DIA = .220' (RECOVERED)

AMP # 53700-1 (EIW00113) MAX INSIDE DIA = .400' (EXPANDED),  
MIN INSIDE DIA = .150' (RECOVERED)



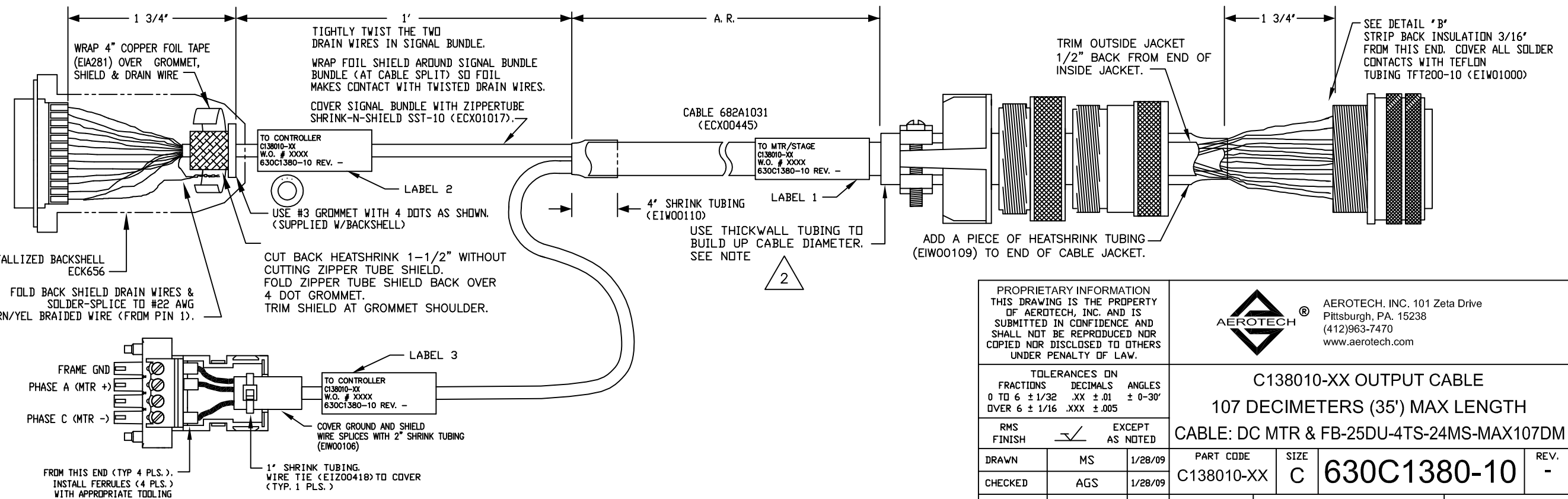
STARTING CABLE LENGTH = A. R. LENGTH + 5 IN

SEE LABELS 1, 2 & 3  
FOR DESTINATION

LABELS FOR  
C138010 CABLES:  
(3) REQUIRED,  
(1 AT EACH END)

DESTINATION  
C138010-XX  
W. O. # / 1 thru X  
630C1380-10 REV. -

CABLE WRAP LABEL: EIA00113



PROPRIETARY INFORMATION  
THIS DRAWING IS THE PROPERTY  
OF AEROTECH, INC. AND IS  
SUBMITTED IN CONFIDENCE AND  
SHALL NOT BE REPRODUCED NOR  
COPIED NOR DISCLOSED TO OTHERS  
UNDER PENALTY OF LAW.



AEROTECH, INC. 101 Zeta Drive  
Pittsburgh, PA. 15238  
(412)963-7470  
www.aerotech.com

TOLERANCES ON FRACTIONS DECIMALS ANGLES 0 TO 6 ± 1/32 .XX ± .01 ± 0-30' OVER 6 ± 1/16 .XXX ± .005			C138010-XX OUTPUT CABLE 107 DECIMETERS (35') MAX LENGTH CABLE: DC MTR & FB-25DU-4TS-24MS-MAX107DM	
RMS FINISH	✓	EXCEPT AS NOTED	PART CODE	SIZE
DRAWN	MS	1/28/09	C138010-XX	C
CHECKED	AGS	1/28/09	630C1380-10	
APPD.	AGS	1/28/09	SCALE NTS	FILE NAME 630C1380-1001.dwg
			SHEET	1 OF 1