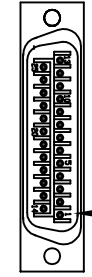


REVISIONS				
REV.	ZONE	DESCRIPTION	DATE	DRAWN

FOR CRIMP TOOL USE AMP HANDLE ASSY 58074-1
WITH AMP HEAD ASSY 58063-2



WIRE SIDE VIEW
AMP PLUG (ECK786)
BACKSHELL (ECK656)

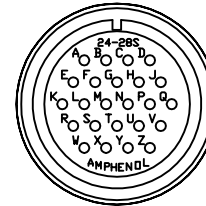
PIN	WIRE	SIGNAL
13	ORN	BRK-
12	WHT	CW/+ LMT
11	-	-
10	-	-
9	-	-
8	WHT/VIO	TACH -
7	BRN	MKR
6	BLK	MKR-N
5	-	-
4	-	-
3	#22 WHT/BRN	ENC +5V
2	-	-
1	SHIELD	SIG SHLD
14	WHT/BLK	COS
15	VIO	COS-N
16	#22 WHT/BLU	LMT +5V
17	GRN	SIN
18	RED	SIN-N
19	WHT/RED	TACH+
20	#22 WHT/GRN	LMT COM
21	#22 WHT/YEL	ENC COM
22	PINK	HM LMT
23	-	-
24	GRY	CCW/- LMT
25	BLU	BRK+

UNUSED WIRES:
YEL

ECX445
#24 AWG UNLESS NOTED

SIGNAL	WIRE	PIN
LMT +5V	#22 WHT/BLU	W
LMT COM	#22 WHT/GRN	X
TACH+	WHT/RED	Y
TACH-	WHT/VIO	Z
CW/+ LMT	WHT	R
CCW/- LMT	GRY	S
HM LMT	PINK	T
BRK-	ORN	U
MTR-	#20 YEL	V
COS-N	VIO	K
SIN-N	RED	L
MKR-N	BLK	M
FRM GND	#20 GRN	N
MTR+	#20 ORN	P
MTR-	#20 BLU	Q
COS	WHT/BLK	E
SIN	GRN	F
MKR	BRN	G
BRK+	BLU	H
MTR+	#20 RED	J
ENC+5V	#22 WHT/BRN	A
ENC COM	#22 WHT/YEL	B
SIG SHLD	SHIELD	C
MTR SHLD	SHIELD	D

STR. PLUG (MCM466) (STD)
ANGLE PLUG MS3108A-24 (OPT.)
ANGLE PLUG (MCM470) (OPT.)
INSERT (MCM469)
CLAMP (MCM467)
BUSHING (MCM474)



INSERT (MCM469)
WIRE SIDE VIEW

2

USE 2' LENGTHS OF THICK WALL HEATSHRINK TUBING TO BUILD UP CABLE DIAMETER FOR PROPER STRAIN RELIEFING. STRAIN RELIEFING MUST WITHSTAND 35 LB. PULL.

CUT THICK WALL HEATSHRINK TUBING WITH CABLE CUTTER SUCH THAT ENDS ARE PERPENDICULAR TO CABLE AND CUT IS SMOOTH. THICK WALL HEATSHRINK TUBING:
EIW00112 MAX INSIDE DIA = .750" (EXPANDED),
MIN INSIDE DIA = .220" (RECOVERED)
EIW00113 MAX INSIDE DIA = .400" (EXPANDED),
MIN INSIDE DIA = .150" (RECOVERED)

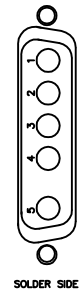
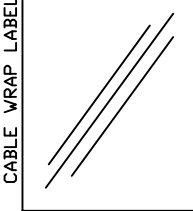
1

STARTING CABLE LENGTH SHOULD BE 5 IN LONGER THAN TOTAL LENGTH OF CABLE. LENGTH OF CABLE IS DESIGNATED BY THE (XX) IN CABLE NAME.

SEE LABELS 1, 2 & 3 FOR DESTINATION

LABELS FOR C138011 CABLES:
(3) REQUIRED,
(1 AT EACH END)

DESTINATION
P/N: C138011-xx
W/O#: / 1 thru x
DWG: 630C1380-11 REV x



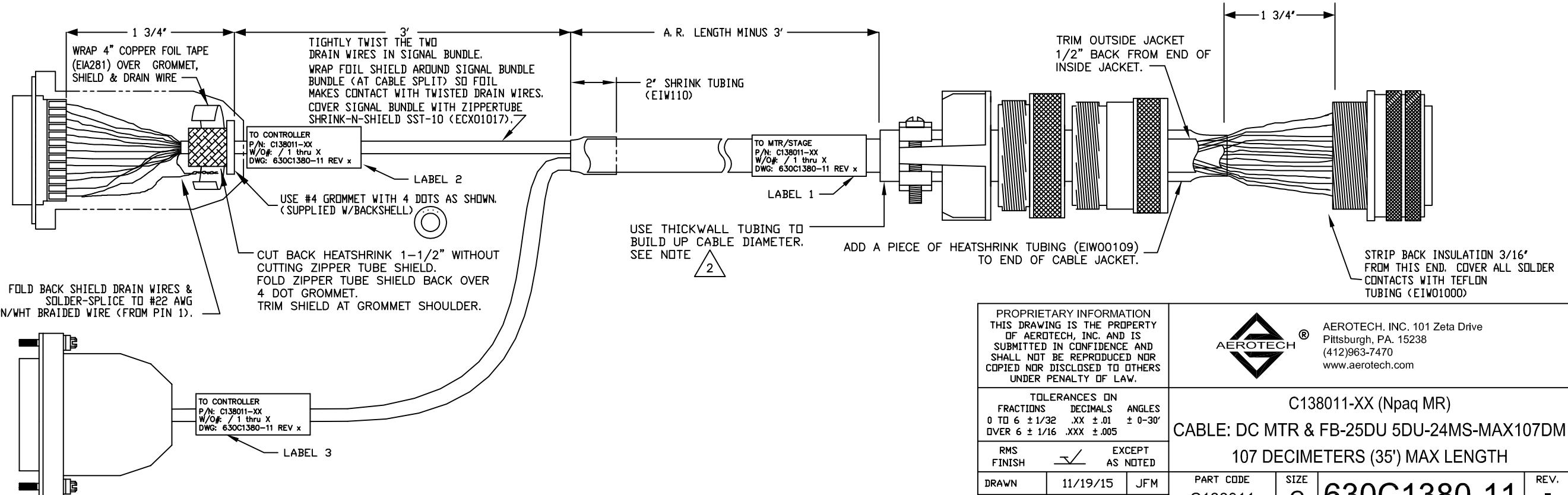
SOLDER SIDE

5-PIN MALE HPD ECK01236
(5) 20AMP PINS ECK00660
BACKSHELL ECK00656

ECX445, INNER BUNDLE #20AWG

PIN	WIRE	SIGNAL
1	RED	MTR+
1	ORN	MTR+
3	YEL	MTR-
3	BLU	MTR-
5	SHIELD	MTR SHLD
5	GRN	FRM GND
5	WHT	FRM GND

INNER BUNDLE OF ECX445
UNUSED WIRES:
#20 BRN



USE THICKWALL TUBING TO BUILD UP CABLE DIAMETER. SEE NOTE 2

2

PROPRIETARY INFORMATION
THIS DRAWING IS THE PROPERTY OF AEROTECH, INC. AND IS SUBMITTED IN CONFIDENCE AND SHALL NOT BE REPRODUCED NOR COPIED NOR DISCLOSED TO OTHERS UNDER PENALTY OF LAW.



AEROTECH, INC. 101 Zeta Drive
Pittsburgh, PA. 15238
(412)963-7470
www.aerotech.com

TOLERANCES ON		
FRACTIONS	DECIMALS	ANGLES
0 TO 6 ± 1/32	.XX ± .01	± 0-30°
OVER 6 ± 1/16	.XXX ± .005	

C138011-XX (Npaq MR)
CABLE: DC MTR & FB-25DU 5DU-24MS-MAX107DM
107 DECIMETERS (35') MAX LENGTH

FINISH	EXCEPT AS NOTED
RMS	✓

DRAWN	11/19/15	JFM	PART CODE	SIZE	REV.
CHECKED	11/19/15	AGS	C138011	C	-
APPD.	11/19/15	AGS	SCALE NTS	FILE NAME 630C1380-1101.dwg	SHEET 1 OF 1