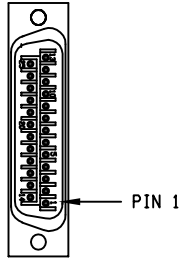


FOR CRIMP TOOL USE AMP HANDLE ASSY 58074-1 WITH AMP HEAD ASSY 58063-2



**DETAIL "A"**

AMP PLUG 745496-2 (ECK786)  
VIEWED FROM WIRE SIDE OF CONNECTOR

| PIN | WIRE        | SIGNAL    |
|-----|-------------|-----------|
| 13  | ORN         | BRK-      |
| 12  | WHT         | CW/+ LMT  |
| 11  | -           | -         |
| 10  | -           | -         |
| 9   | -           | -         |
| 8   | WHT/VID     | TACH -    |
| 7   | BRN         | MKR       |
| 6   | BLK         | MKR-N     |
| 5   | -           | -         |
| 4   | -           | -         |
| 3   | #22 WHT/BRN | ENC +5V   |
| 2   | -           | -         |
| 1   | SHIELD      | SIG SHLD  |
| 14  | WHT/BLK     | COS       |
| 15  | VIO         | COS-N     |
| 16  | #22 WHT/BLU | LMT +5V   |
| 17  | GRN         | SIN       |
| 18  | RED         | SIN-N     |
| 19  | WHT/RED     | TACH+     |
| 20  | #22 WHT/GRN | LMT COM   |
| 21  | #22 WHT/YEL | ENC COM   |
| 22  | PINK        | HM LMT    |
| 23  | -           | -         |
| 24  | GRY         | CCW/- LMT |
| 25  | BLU         | BRK+      |

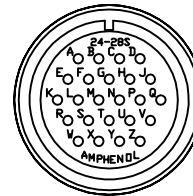
#24 AWG UNLESS OTHERWISE NOTED

STR. PLUG MS3106A-24 (MCM466) (STD)  
INSERT MS24-28S (MCM469)  
CLAMP AN3057-16 (MCM467)  
BUSHING AN3055-28-16 (MCM474)

| SIGNAL    | WIRE        | PIN    |
|-----------|-------------|--------|
| LMT +5V   | #22 WHT/BLU | W      |
| LMT COM   | #22 WHT/GRN | X      |
| TACH+     | WHT/RED     | Y      |
| TACH-     | WHT/VIO     | Z      |
| CW/+ LMT  | WHT         | R      |
| CCW/- LMT | GRY         | S      |
| HM LMT    | PINK        | T      |
| BRK-      | ORN         | U      |
| MTR-      | #20 WHT     | V      |
| COS-N     | VIO         | K      |
| SIN-N     | RED         | L      |
| MKR-N     | BLK         | M      |
| FRM GND   | #20 GRN     | N(1/2) |
| FRM GND   | #20 BRN     | N(2/2) |
| MTR+      | #20 YEL     | P      |
| MTR-      | #20 ORN     | Q      |
| COS       | WHT/BLK     | E      |
| SIN       | GRN         | F      |
| MKR       | BRN         | G      |
| BRK+      | BLU         | H      |
| MTR+      | #20 BLU     | J      |
| ENC+5V    | #22 WHT/BRN | A      |
| ENC COM   | #22 WHT/YEL | B      |
| SIG SHLD  | SHIELD      | C      |
| MTR SHLD  | SHIELD      | D      |

UNUSED WIRES:  
YEL

INNER BUNDLE  
OF 682A1031



**DETAIL "B"**

INSERT MS24-28S (MCM469)  
VIEWED FROM WIRE SIDE OF CONNECTOR

| REVISIONS |      |   |          |       |
|-----------|------|---|----------|-------|
| REV.      | ZONE | DESCRIPTION   | DATE     | DRAWN |
| B         |      | NO CHANGE THIS SHEET                                | 07/15/97 | DTC   |
| C         |      | ADDED ECN7079                                       | 06/03    | JRF   |
| D         |      | ADDED ECN7558                                       | 12/8/03  | EJB   |
| E         |      | ADDED FBF-3, CHANGED MOTOR LEADS TO #16 PER ECN9479 | 7/24/06  | MS    |
| F         |      | ADDED ECN11268                                      | 07/08    | JRF   |



APPLY LABELS TO WIRES  
USE EIA01162 LABEL,  
BRADY PSPT-187-175W WIRE  
MARKING SLEEVE FOR #18-12 AWG



USE 2' LENGTHS OF THICK WALL HEATSHRINK TUBING  
TO BUILD UP CABLE DIAMETER FOR  
PROPER STRAIN RELIEVING.  
STRAIN RELIEVING MUST WITHSTAND 35 LB. PULL.

CUT THICK WALL HEATSHRINK TUBING WITH CABLE CUTTER SUCH  
THAT ENDS ARE PERPENDICULAR TO CABLE AND CUT IS SMOOTH.

THICK WALL HEATSHRINK TUBING:

AMP # 53701-1 (EIW00112) MAX INSIDE DIA = .750" (EXPANDED),  
MIN INSIDE DIA = .220" (RECOVERED)

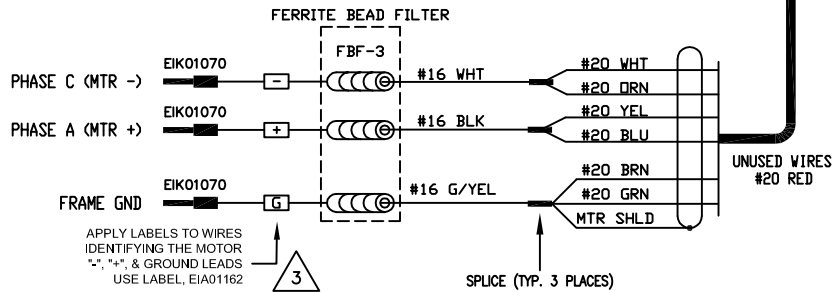
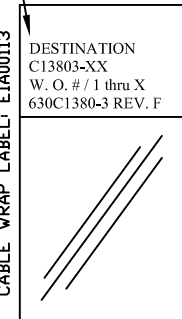
AMP # 53700-1 (EIW00113) MAX INSIDE DIA = .400" (EXPANDED),  
MIN INSIDE DIA = .150" (RECOVERED)



STARTING CABLE LENGTH = A. R. LENGTH + 5 IN

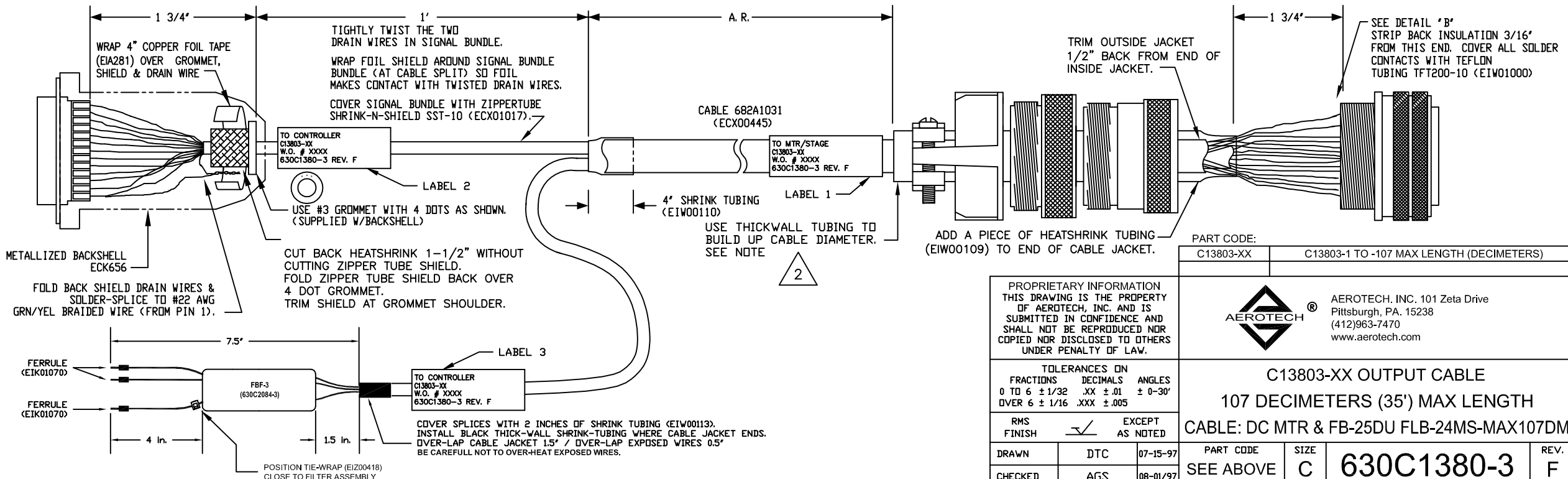
SEE LABELS 1, 2 & 3  
FOR DESTINATION

LABELS FOR  
C13803 CABLES:  
(3) REQUIRED,  
(1 AT EACH END)



APPLY LABELS TO WIRES  
IDENTIFYING THE MOTOR  
"++", "+", & GROUND LEADS  
USE LABEL, EIA01162

SPLICE (TYP. 3 PLACES)



| PART CODE: |  |
|------------|--|
| C13803-XX  | C13803-1 TO -107 MAX LENGTH (DECIMETERS) |

PROPRIETARY INFORMATION  
THIS DRAWING IS THE PROPERTY  
OF AEROTECH, INC. AND IS  
SUBMITTED IN CONFIDENCE AND  
SHALL NOT BE REPRODUCED NOR  
COPIED NOR DISCLOSED TO OTHERS  
UNDER PENALTY OF LAW.



AEROTECH, INC. 101 Zeta Drive  
Pittsburgh, PA. 15238  
(412)963-7470  
www.aerotech.com

| TOLERANCES ON |             |         |
|---------------|-------------|---------|
| FRACTIONS     | DECIMALS    | ANGLES  |
| 0 TO 6 ± 1/32 | .XX ± .01   | ± 0-30' |
| OVER 6 ± 1/16 | .XXX ± .005 |         |

RMS FINISH EXCEPT AS NOTED

| DRAWN   | DTC | 07-15-97 |
|---------|-----|----------|
| CHECKED | AGS | 08-01/97 |
| APPD.   | AGS | 08-01/97 |

**C13803-XX OUTPUT CABLE**  
**107 DECIMETERS (35') MAX LENGTH**  
**CABLE: DC MTR & FB-25DU FLB-24MS-MAX107DM**

|           |      |      |
|-----------|------|------|
| PART CODE | SIZE | REV. |
| SEE ABOVE | C    | F    |

SCALE NTS FILE NAME 630C1380-3F1.dwg SHEET 1 OF 1