

REVISIONS				
REV.	ZONE	DESCRIPTION	DATE	DRAWN

PIN	WIRE	SIGNAL
13	WHT/GRN	BRK-
12	WHT	CW/+ LMT
11	-	-
10	-	-
9	-	-
8	WHT/BLU	TACH -
7	GREY	MKR
6	GRY/BRN	MKR-N
5	-	-
4	-	-
3(1/4)	VIO	ENC +5V
3(2/4)	YEL/BRN	ENC +5V
3(3/4)	BRN/GRN	ENC +5V
3(4/4)	BRN/BLU	ENC +5V
2	-	-
1	SHIELD	SIG SHLD
14	WHT/RED	COS
15	BRN/RED	COS-N
16	RED	LMT +5V
17	PNK/BRN	SIN
18	WHT/BLK	SIN-N
19	GRY/PNK	TACH +
20	GRN	LMT COM
21(1/4)	BLU	ENC COM
21(2/4)	PNK	ENC COM
21(3/4)	YEL	ENC COM
21(4/4)	BRN	ENC COM
22	RED/BLU	HM LMT
23	-	-
24	BLK	CCW/- LMT
25	WHT/GRY	BRK+

AMP PLUG #745496-2 (ECK786)  
AMPHENDL BACKSHELL #17-1726-2 (ECK656)

DLFLEX #27438  
(25 COND. #24), ECX01121

#24 AWG UNLESS OTHERWISE NOTED

STR. PLUG MS3106A-24 (MCM466) (STD)  
ANGLE PLUG MS3108A-24 (DPT.)  
ANGLE PLUG MS3108B-24 (MCM470) (DPT.)  
INSERT MS24-28S (MCM469)  
CLAMP 97-3057-1016 (MCM467)  
BUSHING AN3055-28-16 (MCM474)

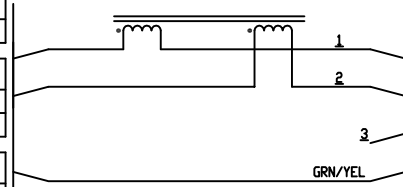
EXC01121  
WIRE DLFLEX#27438 HI-FLEX 25 COND #24  
UNUSED WIRES: WHT/YEL AND WHT/PNK

SIGNAL	WIRE	PIN
LMT +5V	RED	W
LMT COM	GRN	X
TACH+	GRY/PNK	Y
TACH-	WHT/BLU	Z
CW/+ LMT	WHT	R
CCW/- LMT	BLK	S
HM LMT	RED/BLU	T
BRK-	WHT/GRN	U
COS-N	BRN/RED	K
SIN-N	WHT/BLK	L
MKR-N	GRY/BRN	M
COS	WHT/RED	E
SIN	PNK/BRN	F
MKR	GRY	G
BRK+	WHT/GRY	H
ENC+5V	VIO	A (1/4)
ENC+5V	YEL/BRN	A (2/4)
ENC+5V	BRN/GRN	A (3/4)
ENC+5V	BRN/BLU	A (4/4)
ENC COM	BLU	B (1/4)
ENC COM	PNK	B (2/4)
ENC COM	YEL	B (3/4)
ENC COM	BRN	B (4/4)
SIG SHLD	SHIELD	C
MTR SHLD	SHIELD	D
MTR FRM GRD	#16 GRN/YEL	N
MTR +	#16 BLK -1	P
MTR +	#16 BLK -2	J
MTR -	#16 BLK -2	Q
MTR -	#16 BLK -2	V

3

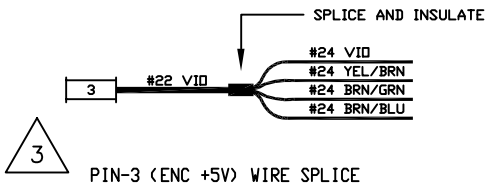
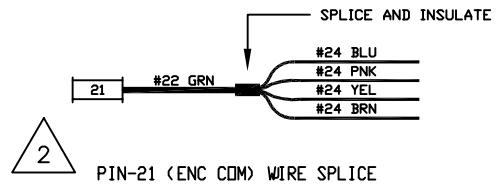
2

FLYING LEAD	WIRE	SIGNAL
BRADY WIRE LABEL #1	BLK 1	MTR+
FLYING LEAD	WIRE	SIGNAL
BRADY WIRE LABEL #2	BLK 2	MTR-
#8 RING TONGUE	WIRE	SIGNAL
(1/2)	SHIELD	MTR SHLD
(2/2)	GRN/YEL	FRM GND



ECX01120  
WIRE DLFLEX#26251 HI-FLEX 4 COND #16  
UNUSED WIRE: BLK #3

FOR CRIMP TOOL USE AMP HANDLE ASSY 58074-1  
WITH AMP HEAD ASSY 58063-2



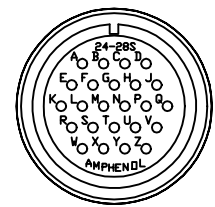
1

STARTING CABLE LENGTH = 2 FT BEYOND SPECIFIED CABLE LENGTH



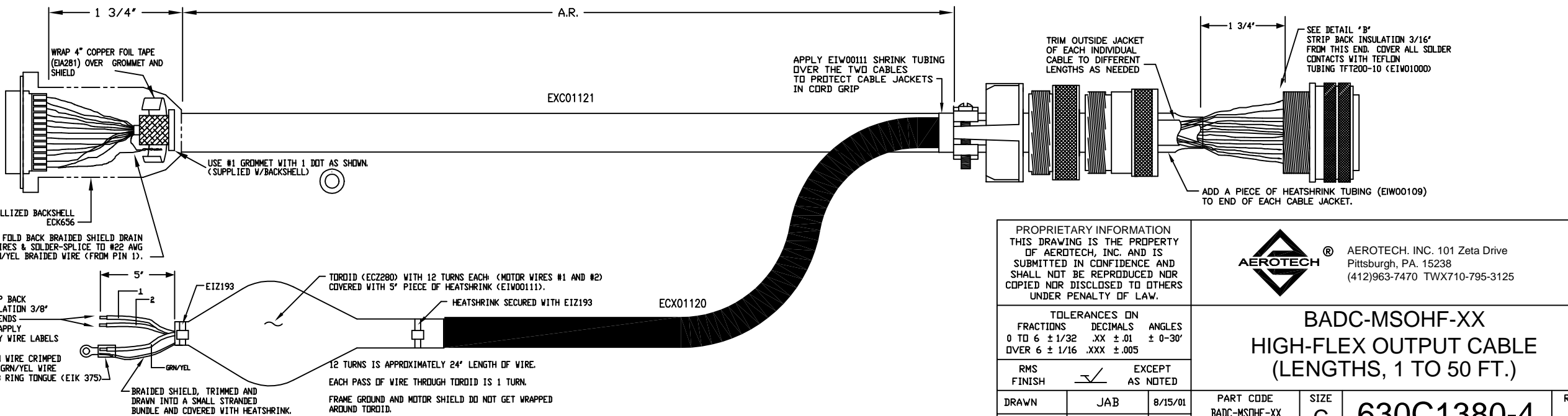
DETAIL "A"

AMP PLUG 745496-2 (ECK786)  
VIEWED FROM WIRE SIDE OF CONNECTOR



DETAIL "B"

INSERT MS24-28S (MCM469)  
VIEWED FROM WIRE SIDE OF CONNECTOR



PROPRIETARY INFORMATION  
THIS DRAWING IS THE PROPERTY  
OF AEROTECH, INC. AND IS  
SUBMITTED IN CONFIDENCE AND  
SHALL NOT BE REPRODUCED NOR  
COPIED NOR DISCLOSED TO OTHERS  
UNDER PENALTY OF LAW.



AEROTECH, INC. 101 Zeta Drive  
Pittsburgh, PA. 15238  
(412)963-7470 TWX710-795-3125

TOLERANCES ON		
FRACTIONS	DECIMALS	ANGLES
0 TO 6 ± 1/32	.XX ± .01	± 0-30'
OVER 6 ± 1/16	.XXX ± .005	

RMS FINISH	EXCEPT AS NOTED

DRAWN	JAB	8/15/01
CHECKED	AGS	8/15/01
APPD.	AGS	8/15/01

**BADC-MSOHF-XX**  
**HIGH-FLEX OUTPUT CABLE**  
**(LENGTHS, 1 TO 50 FT.)**

PART CODE BADC-MSOHF-XX	SIZE C	REV. -
630C1380-4		
SCALE NTS	FILE NAME 630C1380-401.dwg	SHEET 1 OF 1