

REVISIONS				
REV.	ZONE	DESCRIPTION	DATE	DRAWN
-		-	-	-

AMP PLUG #745496-2 (ECK786)
BACKSHELL #17-1726-2 (ECK656)
682A1031 (ECX445)
#24 AWG UNLESS OTHERWISE NOTED

PIN	WIRE	SIGNAL
13	ORN	BRK-
12	WHT	CW/+ LMT
11	-	-
10	-	-
9	-	-
8	WHT/VIO	TACH -
7	BRN	MKR
6	BLK	MKR-N
5	-	-
4	-	-
3	#22 WHT/BRN	ENC +5V
2	-	-
1	SHIELD	SIG SHLD

PIN	WIRE	SIGNAL
1	RED	MTR+
1	ORN	MTR+

PIN	WIRE	SIGNAL
2	YEL	MTR-
2	BLU	MTR-

PIN	WIRE	SIGNAL
5	SHIELD	MTR SHLD
5	GRN	FRM GND
5	WHT	FRM GND

CABLE 682A1031 INNER BUNDLE #20AWG
CONNECTOR HI-PWR-"D" 5 PIN MALE ITT CANNON DBM5W5PK87 (ECK01236)
(5) PIN CONTACT:#DM53745-7 (20AMP) (ECK00660)
BACKSHELL 25 PIN D #17-1726-2 METALIZED SHELL>AMPHENOL (ECK00656)

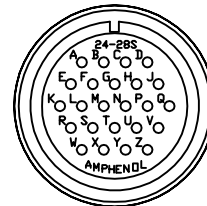
#24 AWG UNLESS OTHERWISE NOTED

SIGNAL	WIRE	PIN
LMT +5V	#22 WHT/BLU	W
LMT COM	#22 WHT/GRN	X
TACH+	WHT/RED	Y
TACH-	WHT/VIO	Z
CW/+ LMT	WHT	R
CCW/- LMT	GRY	S
HM LMT	PINK	T
BRK-	ORN	U
MTR-	#20 YEL	V
COS-N	VIO	K
SIN-N	RED	L
MKR-N	BLK	M
FRM GND	#20 GRN	N(1/2)
FRM GND	#20 WHT	N(2/2)
MTR+	#20 ORN	P
MTR-	#20 BLU	Q
COS	WHT/BLK	E
SIN	GRN	F
MKR	BRN	G
BRK+	BLU	H
MTR+	#20 RED	J
ENC+5V	#22 WHT/BRN	A
ENC COM	#22 WHT/YEL	B
SIG SHLD	SHIELD	C
MTR SHLD	SHIELD	D

STR. PLUG MS3106A-24 (MCM466) (STD)
ANGLE PLUG MS3108A-24 (OPT.)
ANGLE PLUG MS3108B-24 (MCM470) (OPT.)
INSERT MS24-28S (MCM469)
CLAMP 97-3057-1016 (MCM467)
BUSHING AN3055-28-16 (MCM474)

UNUSED WIRES:
YEL

INNER BUNDLE
OF 682A1031
UNUSED WIRES:
#20 BRN



DETAIL "B"

INSERT MS24-28S (MCM469)
VIEWED FROM WIRE SIDE OF CONNECTOR

FOR CRIMP TOOL USE AMP HANDLE ASSY 58074-1
WITH AMP HEAD ASSY 58063-2



DETAIL "A"

AMP PLUG 745496-2 (ECK786)
VIEWED FROM WIRE SIDE OF CONNECTOR

2

USE 2" LENGTHS OF THICK WALL HEATSHRINK TUBING
TO BUILD UP CABLE DIAMETER FOR
PROPER STRAIN RELIEFING.
STRAIN RELIEFING MUST WITHSTAND 35 LB. PULL.

CUT THICK WALL HEATSHRINK TUBING WITH CABLE CUTTER SUCH
THAT ENDS ARE PERPENDICULAR TO CABLE AND CUT IS SMOOTH.

THICK WALL HEATSHRINK TUBING:

AMP # 53701-1 (EIW00112) MAX INSIDE DIA = .750" (EXPANDED),
MIN INSIDE DIA = .220" (RECOVERED)

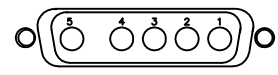
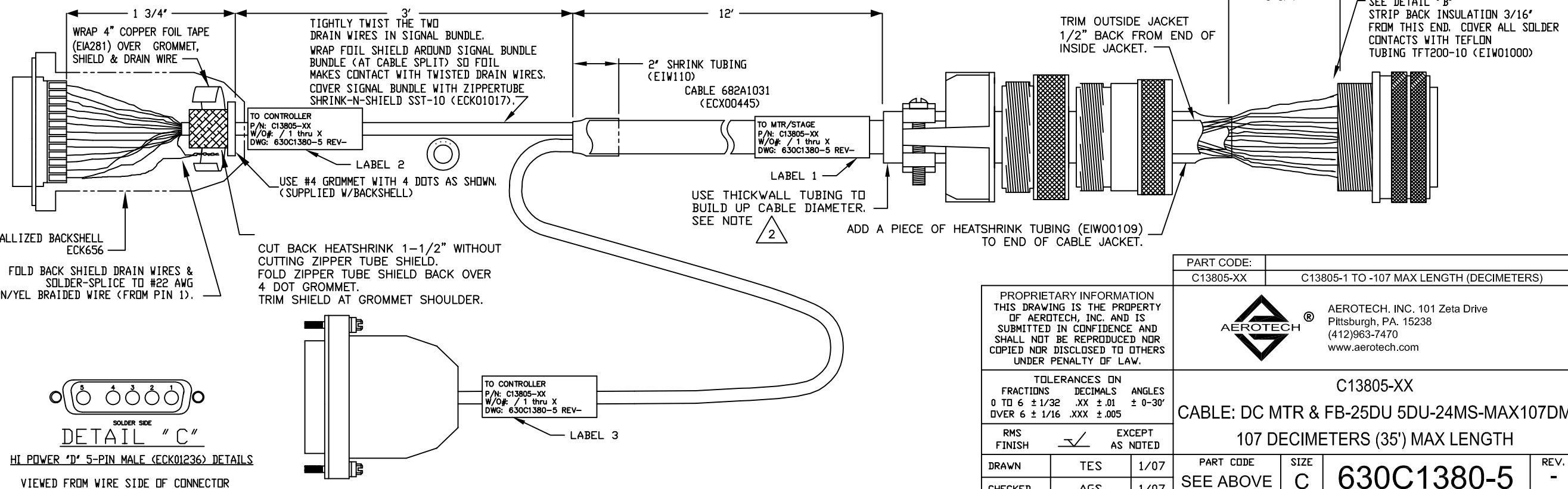
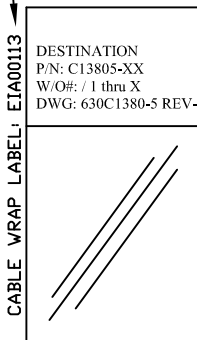
AMP # 53700-1 (EIW00113) MAX INSIDE DIA = .400" (EXPANDED),
MIN INSIDE DIA = .150" (RECOVERED)

1

STARTING CABLE LENGTH = 18 FT

SEE LABELS 1, 2 & 3
FOR DESTINATION

LABELS FOR
C13805 CABLES:
(3) REQUIRED,
(1 AT EACH END)



DETAIL "C"
HI POWER "D" 5-PIN MALE (ECK01236) DETAILS
VIEWED FROM WIRE SIDE OF CONNECTOR

PART CODE:		C13805-XX	C13805-1 TO -107 MAX LENGTH (DECIMETERS)
<p>PROPRIETARY INFORMATION THIS DRAWING IS THE PROPERTY OF AEROTECH, INC. AND IS SUBMITTED IN CONFIDENCE AND SHALL NOT BE REPRODUCED NOR COPIED NOR DISCLOSED TO OTHERS UNDER PENALTY OF LAW.</p>			
<p>TOLERANCES ON FRACTIONS DECIMALS ANGLES 0 TO 6 ± 1/32 .XX ± .01 ± 0-30' OVER 6 ± 1/16 .XXX ± .005</p>		<p>AEROTECH® AEROTECH, INC. 101 Zeta Drive Pittsburgh, PA. 15238 (412)963-7470 www.aerotech.com</p>	
RMS FINISH		✓	EXCEPT AS NOTED
DRAWN	TES	1/07	PART CODE
CHECKED	AGS	1/07	SEE ABOVE
APPD.	AGS	1/07	SCALE NTS
C13805-XX		CABLE: DC MTR & FB-25DU 5DU-24MS-MAX107DM	
107 DECIMETERS (35') MAX LENGTH		SIZE	REV.
630C1380-5		C	-
FILE NAME 630C1380-501.dwg		SHEET	1 OF 1