

| REVISIONS |      |             |      |       |
|-----------|------|-------------|------|-------|
| REV.      | ZONE | DESCRIPTION | DATE | DRAWN |
|           |      |             |      |       |

AMP PLUG #745496-2 (ECK786)  
BACKSHELL #17-1726-2 (ECK656)  
682A1031 (ECX445)  
#24 AWG UNLESS OTHERWISE NOTED

#24 AWG UNLESS OTHERWISE NOTED  
CABLE END IS CUT, NO WIRE STRIPPING

| PIN | WIRE        | SIGNAL    |
|-----|-------------|-----------|
| 13  | ORN         | BRK-      |
| 12  | WHT         | CW/+ LMT  |
| 11  | -           | -         |
| 10  | -           | -         |
| 9   | -           | -         |
| 8   | WHT/VIO     | TACH -    |
| 7   | BRN         | MKR       |
| 6   | BLK         | MKR-N     |
| 5   | -           | -         |
| 4   | -           | -         |
| 3   | #22 WHT/BRN | ENC +5V   |
| 2   | -           | -         |
| 1   | SHIELD      | SIG SHLD  |
| 14  | WHT/BLK     | COS       |
| 15  | VIO         | COS-N     |
| 16  | #22 WHT/BLU | LMT +5V   |
| 17  | GRN         | SIN       |
| 18  | RED         | SIN-N     |
| 19  | WHT/RED     | TACH+     |
| 20  | #22 WHT/GRN | LMT COM   |
| 21  | #22 WHT/YEL | ENC COM   |
| 22  | PINK        | HM LMT    |
| 23  | -           | -         |
| 24  | GRY         | CCW/- LMT |
| 25  | BLU         | BRK+      |

| SIGNAL    | WIRE        |
|-----------|-------------|
| LMT +5V   | #22 WHT/BLU |
| LMT COM   | #22 WHT/GRN |
| TACH+     | WHT/RED     |
| TACH-     | WHT/VIO     |
| CW/+ LMT  | WHT         |
| CCW/- LMT | GRY         |
| HM LMT    | PINK        |
| BRK-      | ORN         |
| MTR-      | #20 YEL     |
| COS-N     | VIO         |
| SIN-N     | RED         |
| MKR-N     | BLK         |
| FRM GND   | #20 GRN     |
| FRM GND   | #20 WHT     |
| MTR+      | #20 ORN     |
| MTR-      | #20 BLU     |
| COS       | WHT/BLK     |
| SIN       | GRN         |
| MKR       | BRN         |
| BRK+      | BLU         |
| MTR+      | #20 RED     |
| ENC+5V    | #22 WHT/BRN |
| ENC COM   | #22 WHT/YEL |
| SIG SHLD  | SHIELD      |
| MTR SHLD  | SHIELD      |

| PIN    | WIRE    | SIGNAL   |
|--------|---------|----------|
| 14     | -       | -        |
| 13     | -       | -        |
| 12     | -       | -        |
| 11     | -       | -        |
| 10     | -       | -        |
| 9      | -       | -        |
| 8      | SHIELD  | MTR SHLD |
| 7      | #20 RED | MTR+     |
| 6      | #20 BLU | MTR-     |
| 5      | #20 ORN | MTR+     |
| 4      | #20 YEL | MTR-     |
| 3      | -       | -        |
| 2      | -       | -        |
| 1(2/2) | #20 WHT | FRM GND  |
| 1(1/2) | #20 GRN | FRM GND  |

AMP PLUG #206044-1 (ECK131)  
BACKSHELL #206070-1 (ECK134)  
#18-24 PINS #66102-7 (EIK192) QTY 5  
#16-18 PIN #66098-7 (EIK194) QTY 1

UNUSED WIRES:  
YEL

UNUSED WIRES:  
#20 BRN

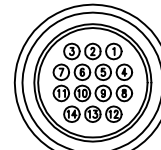
INNER BUNDLE  
OF 682A1031

FOR CRIMP TOOL USE AMP HANDLE ASSY 58074-1  
WITH AMP HEAD ASSY 58063-2



DETAIL "A"

AMP PLUG 745496-2 (ECK786)  
VIEWED FROM WIRE SIDE OF CONNECTOR



DETAIL "B"

AMP PLUG 206044-1 (ECK131)  
VIEWED FROM WIRE SIDE OF CONNECTOR

FOR CRIMP TOOL USE AMP HANDLE ASSY 90277-1  
OR USE AMP CRIMPER MODEL #565435-5  
WITH AMP HEAD ASSY 66102-2



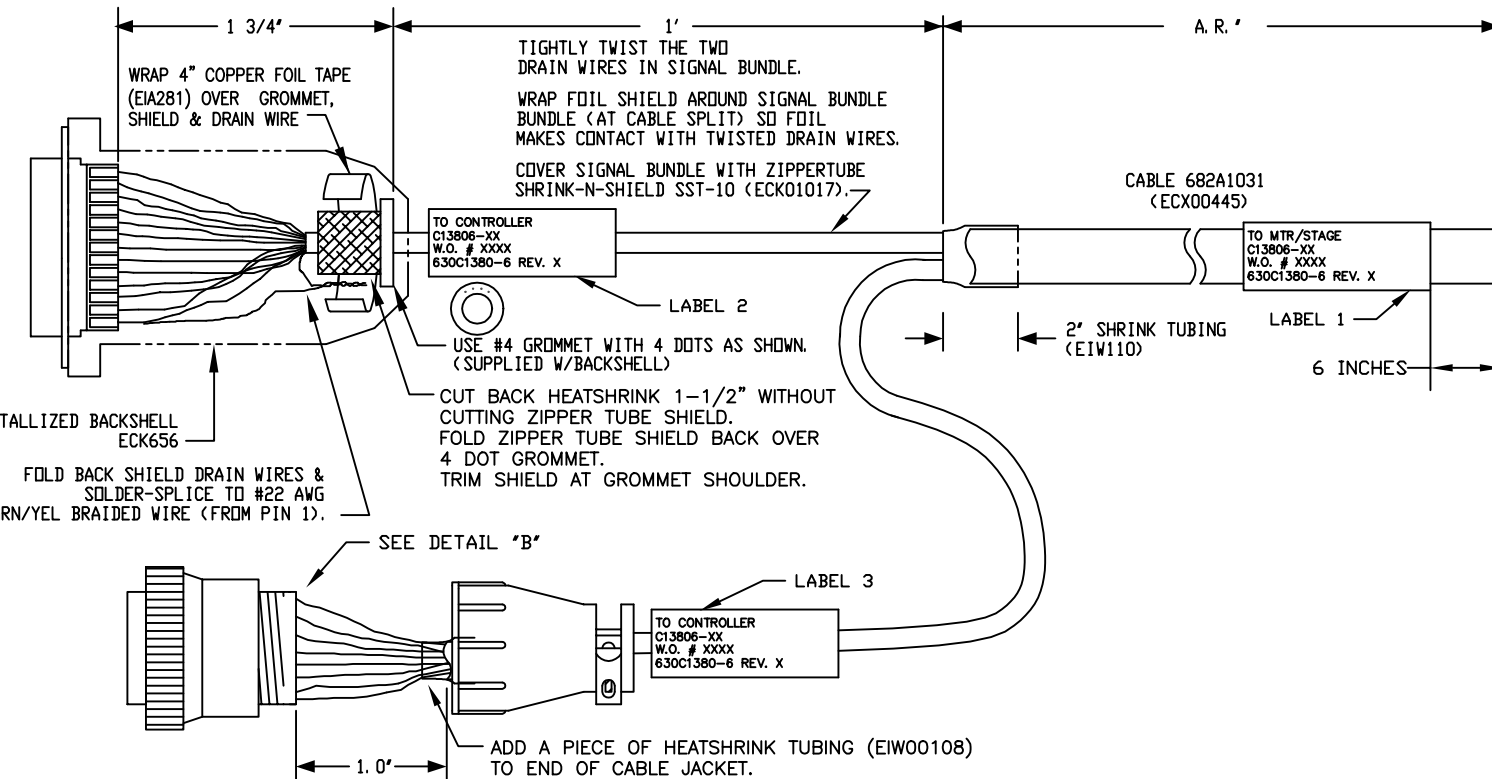
STARTING CABLE LENGTH = REQUIRED LENGTH + 5 IN

SEE LABELS 1, 2 & 3  
FOR DESTINATION

LABELS FOR  
C13806 CABLES:  
(3) REQUIRED,  
(2 AT CONTROL END)  
(1 AT MOTOR END)

DESTINATION  
C13806-XX  
W. O. # / 1 thru X  
630C1380-6 REV(-)

CABLE WRAP LABEL: EIA00113



|   |                 |  |  |                            |
|---|-----------------|--|--|----------------------------|
| PART CODE:  |                 | C13806-XX  | C13806-1 TO -107 MAX LENGTH (DECIMETERS) |                            |
| PROPRIETARY INFORMATION<br>THIS DRAWING IS THE PROPERTY OF AEROTECH, INC. AND IS SUBMITTED IN CONFIDENCE AND SHALL NOT BE REPRODUCED NOR COPIED NOR DISCLOSED TO OTHERS UNDER PENALTY OF LAW. |                 | <p>AEROTECH, INC. 101 Zeta Drive<br/>Pittsburgh, PA. 15238<br/>(412)963-7470<br/>www.aerotech.com</p>                  |  |                            |
| TOLERANCES ON<br>FRACTIONS DECIMALS ANGLES<br>0 TO 6 ± 1/32 .XX ± .01 ± 0-30'<br>OVER 6 ± 1/16 .XXX ± .005  |                 | DC-MSO OUTPUT CABLE WITH NO MS CONNECTOR<br>107 DECIMETERS (35') MAX LENGTH<br>CABLE: DC MTR & FB-25DU 14P-FL-MAX107DM |  |                            |
| RMS FINISH  | EXCEPT AS NOTED |  |  |                            |
| DRAWN   | 6-9-2004        | LTL  | PART CODE<br>SEE ABOVE                   | SIZE<br>C                  |
| CHECKED   | 6-9-2004        | AGS  | 630C1380-6                               |                            |
| APPD.   | 6-9-2004        | AGS  | SCALE NTS                                | FILE NAME 630C1380-601.dwg |
| SHEET 1 OF 1  |                 |  |  |                            |