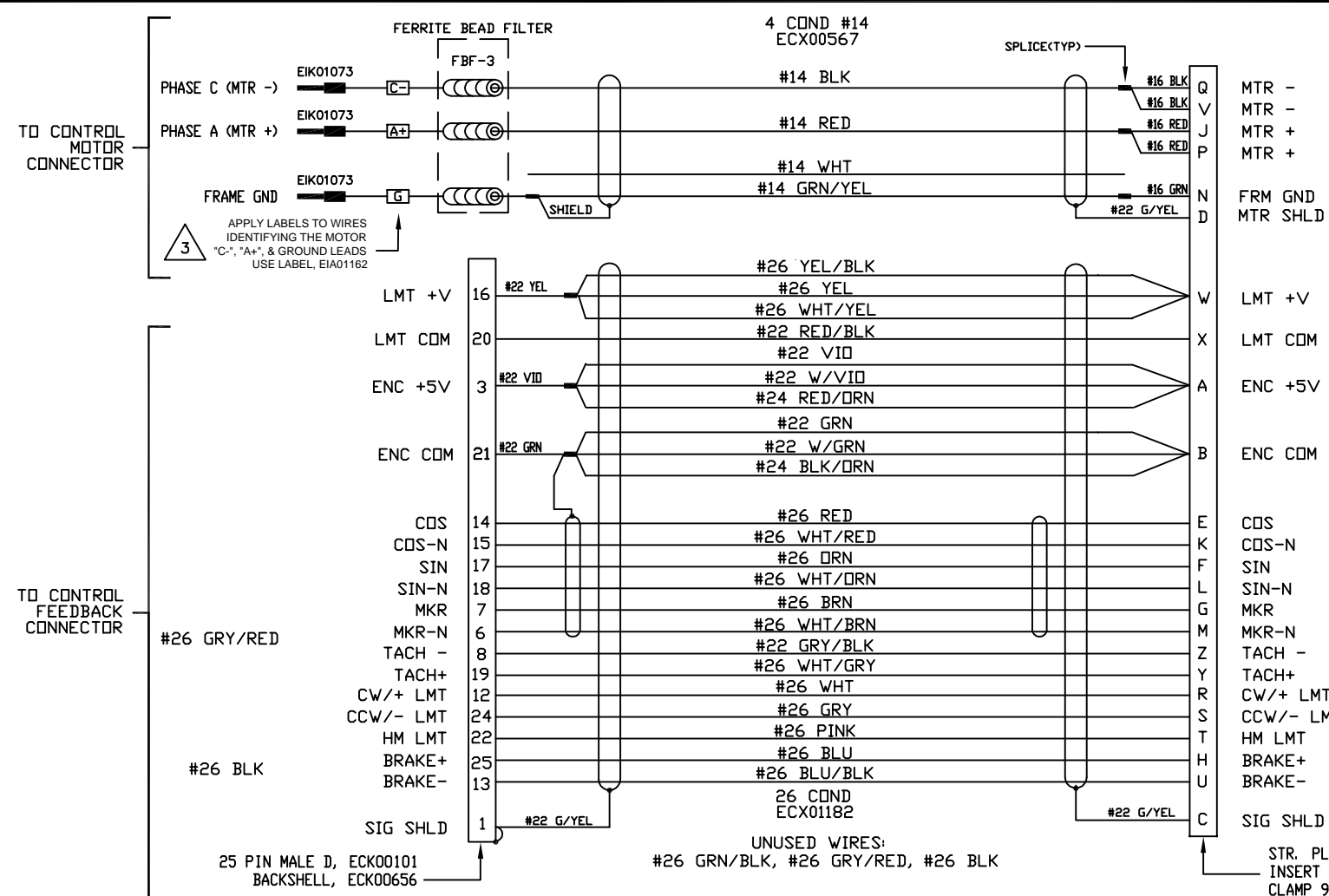
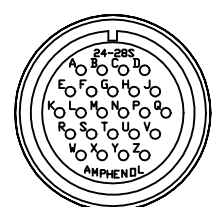


REVISIONS				
REV.	ZONE	DESCRIPTION	DATE	DRAWN
A		PER ECN9941, ADDED SEPARATE WIRING FOR LIMIT POWER.	3/01/07	AGS

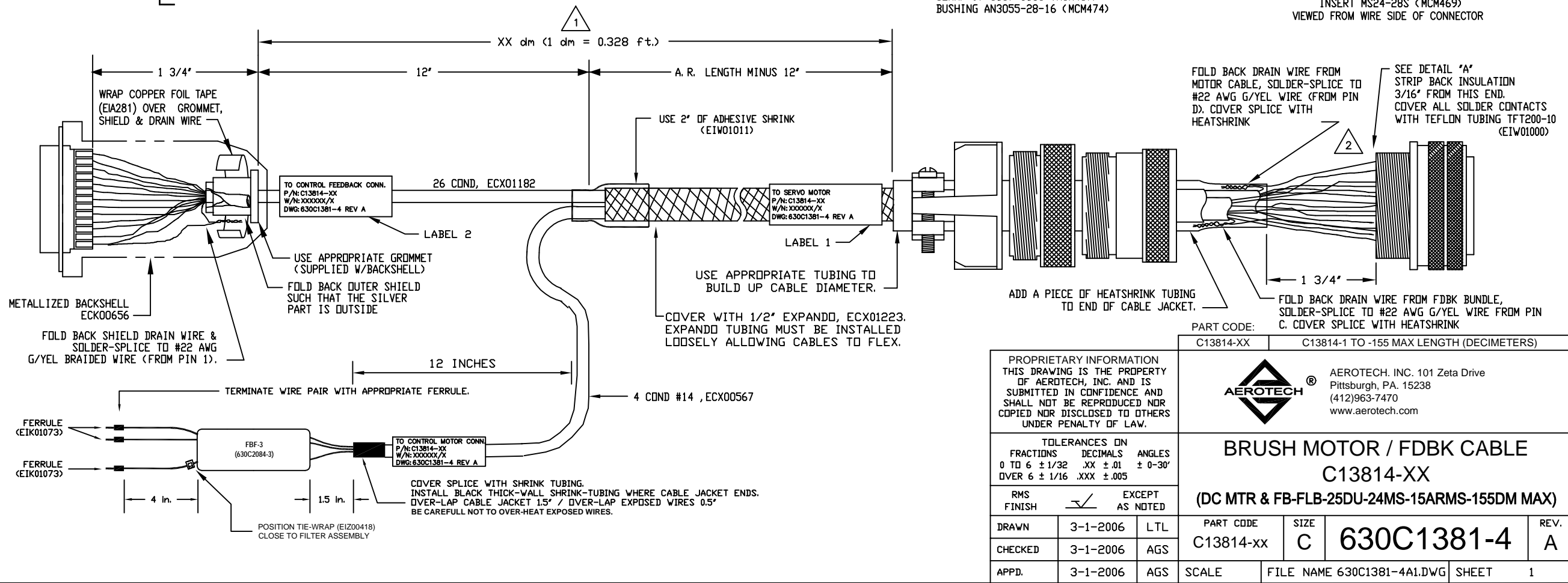


- 3 APPLY LABELS TO WIRES IDENTIFYING THE MOTOR "C-", "A+", & GROUND LEADS USE LABEL, EIA01162
- 2 APPLY SHRINK TUBING TO ALL WIRE/SOLDER-CUP JOINTS. CARE MUST BE TAKEN NOT TO OVER-HEAT THE WIRES DURING SOLDERING AND THE APPLICATION OF THE SHRINK TUBING. SHRINK TUBING IS TO INSULATE ADJACENT CONTACTS AND PROVIDE STRIAN RELIEF FOR THE INDIVIDUAL WIRES.
- 1 STARTING CABLE LENGTH SHOULD BE 12 IN LONGER THAN TOTAL LENGTH OF CABLE.



**DETAIL "A"**  
INSERT MS24-28S (MCM469)  
VIEWED FROM WIRE SIDE OF CONNECTOR

- STR. PLUG MS3106A-24 (MCM466)
- INSERT MS24-28S (MCM469)
- CLAMP 97-3057-1016 (MCM467)
- BUSHING AN3055-28-16 (MCM474)



PROPRIETARY INFORMATION  
THIS DRAWING IS THE PROPERTY  
OF AEROTECH, INC. AND IS  
SUBMITTED IN CONFIDENCE AND  
SHALL NOT BE REPRODUCED NOR  
COPIED NOR DISCLOSED TO OTHERS  
UNDER PENALTY OF LAW.



AEROTECH, INC. 101 Zeta Drive  
Pittsburgh, PA. 15238  
(412)963-7470  
www.aerotech.com

PART CODE:		C13814-XX		C13814-1 TO-155 MAX LENGTH (DECIMETERS)	
<b>BRUSH MOTOR / FDBK CABLE</b>					
<b>C13814-XX</b>					
<b>(DC MTR &amp; FB-FLB-25DU-24MS-15ARMS-155DM MAX)</b>					
DRAWN	3-1-2006	LTL	PART CODE	SIZE	REV.
CHECKED	3-1-2006	AGS	C13814-XX	C	A
APPD.	3-1-2006	AGS	SCALE	FILE NAME 630C1381-4A1.DWG	SHEET 1