

REVISIONS				
SYM.	ZONE	DESCRIPTION	DATE	APPROVAL
A		NO CHANGE THIS SHEET	11/93	EJB

AMP PLUG #745496-2 (ECK786)  
BACKSHELL #17-1726-2 (ECK656)  
682A1031 (ECX445)  
#24 AWG UNLESS OTHERWISE NOTED

BULKHEAD MS3100A-24 (MCM473)  
INSERT MS24-28S (MCM469)  
CLAMP AN3057-16 (MCM467)  
BUSHING AN3055-28-16 (MCM474)

#24 AWG UNLESS OTHERWISE NOTED

PIN	WIRE	SIGNAL
13	-	-
12	WHT	CW/+ LMT
11	-	-
10	-	-
9	-	-
8	WHT/VIO	TACH -
7	BRN	MKR
6	BLK	MKR-N
5	-	-
4	-	-
3	#22 WHT/BRN	ENC +5V
2	-	-
1	SHIELD	SIG SHLD

SIGNAL	WIRE	PIN
LMT +5V	#22 WHT/BLU	W
LMT COM	#22 WHT/GRN	X
TACH+	WHT/RED	Y
TACH-	WHT/VIO	Z
CW/+ LMT	WHT	R
CCW/- LMT	GRY	S
HM LMT	PINK	T
-	-	U
MTR-	#20 YEL	V
COS-N	VIO	K
SIN-N	RED	L
MKR-N	BLK	M
FRM GND	#20 GRN	N(1/2)
FRM GND	#20 WHT	N(2/2)
MTR+	#20 ORN	P
MTR-	#20 BLU	Q
COS	WHT/BLK	E
SIN	GRN	F
MKR	BRN	G
-	-	H
MTR+	#20 RED	J
ENC+5V	#22 WHT/BRN	A
ENC COM	#22 WHT/YEL	B
SIG SHLD	SHIELD	C
MTR SHLD	SHIELD	D

PIN	WIRE	SIGNAL
14	-	-
13	-	-
12	-	-
11	-	-
10	-	-
9	-	-
8	SHIELD	MTR SHLD
7	#20 RED	MTR+
6	#20 BLU	MTR-
5	#20 ORN	MTR+
4	#20 YEL	MTR-
3	-	-
2	-	-
1(2/2)	#20 WHT	FRM GND
1(1/2)	#20 GRN	FRM GND

UNUSED WIRES:  
YEL, BLU, ORG

UNUSED WIRES:  
#20 BRN

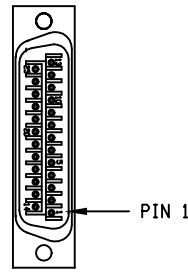
PIN 1 EIK194  
ONLY

AMP PLUG #206044-1 (ECK131)  
BACKSHELL #206070-1 (ECK134)  
#18-24 PINS #66102-7 (EIK192) QTY 5  
#16-18 PIN #66098-7 (EIK194) QTY 1

INNER BUNDLE  
OF 682A1031

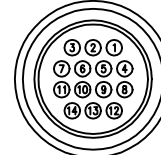
FOR CRIMP TOOL USE AMP HANDLE ASSY 58074-1  
WITH AMP HEAD ASSY 58063-2

FOR CRIMP TOOL USE AMP HANDLE ASSY 90277-1  
OR USE AMP CRIMPER MODEL #565435-5  
WITH AMP HEAD ASSY 66102-2



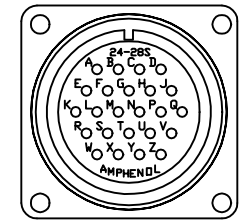
DETAIL "A"

AMP PLUG 745496-2 (ECK786)  
VIEWED FROM WIRE SIDE OF CONNECTOR



DETAIL "B"

AMP PLUG 206044-1 (ECK131)  
VIEWED FROM WIRE SIDE OF CONNECTOR



DETAIL "C"

INSERT MS24-28S (MCM469)  
VIEWED FROM WIRE SIDE OF CONNECTOR

2

USE 2" LENGTHS OF THICK WALL HEATSHRINK TUBING TO BUILD UP CABLE DIAMETER FOR PROPER STRAIN RELIEFING. STRAIN RELIEFING MUST WITHSTAND 35 LB. PULL.

CUT THICK WALL HEATSHRINK TUBING WITH CABLE CUTTER SUCH THAT ENDS ARE PERPENDICULAR TO CABLE AND CUT IS SMOOTH.

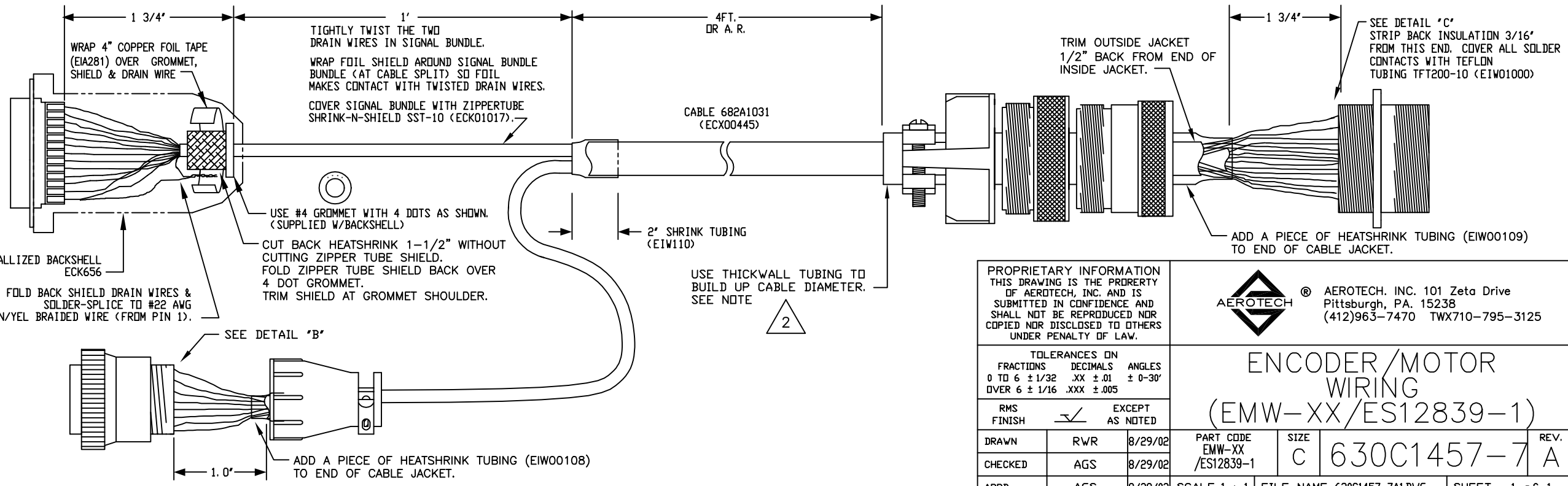
THICK WALL HEATSHRINK TUBING:

AMP # 53701-1 (EIW00112) MAX INSIDE DIA = .750" (EXPANDED), MIN INSIDE DIA = .220" (RECOVERED)

AMP # 53700-1 (EIW00113) MAX INSIDE DIA = .400" (EXPANDED), MIN INSIDE DIA = .150" (RECOVERED)

1

STARTING CABLE LENGTH = A. R. LENGTH + 1.5'



PROPRIETARY INFORMATION  
THIS DRAWING IS THE PROPERTY  
OF AEROTECH, INC. AND IS  
SUBMITTED IN CONFIDENCE AND  
SHALL NOT BE REPRODUCED NOR  
COPIED NOR DISCLOSED TO OTHERS  
UNDER PENALTY OF LAW.

**AEROTECH**® AEROTECH, INC. 101 Zeta Drive  
Pittsburgh, PA. 15238  
(412)963-7470 TWX710-795-3125

TOLERANCES ON		
FRACTIONS	DECIMALS	ANGLES
0 TO 6 ± 1/32	.XX ± .01	± 0-30'
OVER 6 ± 1/16	.XXX ± .005	

## ENCODER/MOTOR WIRING

### (EMW-XX/ES12839-1)

RMS FINISH		EXCEPT AS NOTED
DRAWN	RWR	8/29/02
CHECKED	AGS	8/29/02
APPD.	AGS	8/29/02

PART CODE	SIZE	REV.
EMW-XX/ES12839-1	C	A

SCALE 1 : 1 FILE NAME 630C1457-7A.DWG SHEET 1 of 1