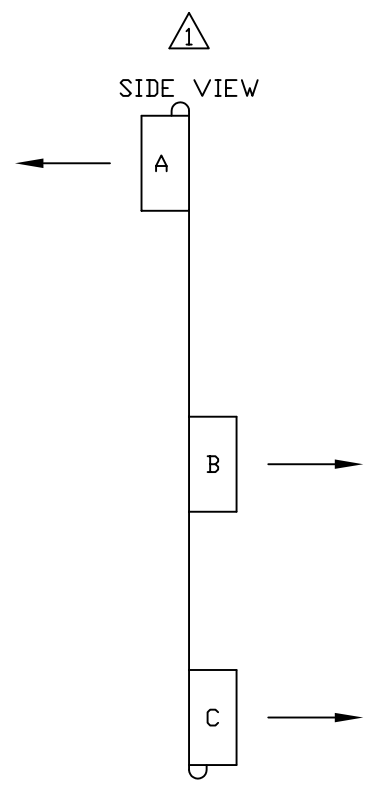
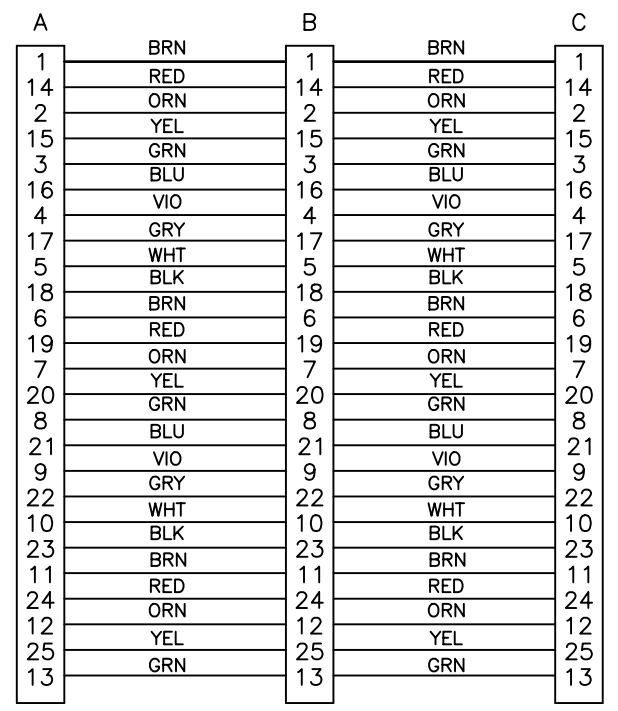


REV	ZONE	REVISION RECORD	DATE	APPROVAL
A		ADDED CONNECTOR SIDE VIEW	3/94	EJB
B		ECN5816: CONNECTOR P/N'S	8/15/01	RWR
C		ADDED ECN8730	05/05	JRF

TO CONTROLLER
ENC/LMT
INPUT

PARALLEL
FEEDBACK
CONNECTOR

PARALLEL
FEEDBACK
CONNECTOR

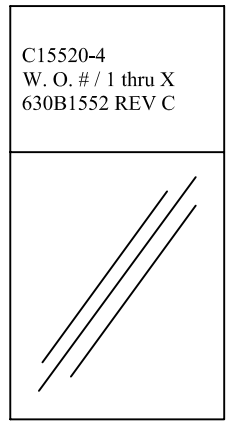


25 LINE MALE "D"
3M#8225-7060, ECK105
SCREWLOCKS, EIZ294

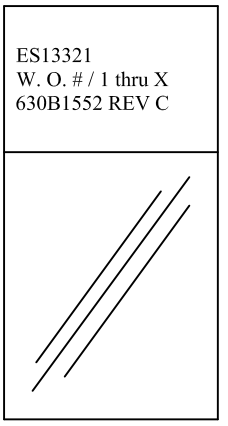
25 LINE FEMALE "D"
3M#8325-6060, ECK1221
JACKSOCKETS, ECK363

25 LINE FEMALE "D"
3M#8325-7060, ECK308
JACKSOCKETS, ECK363

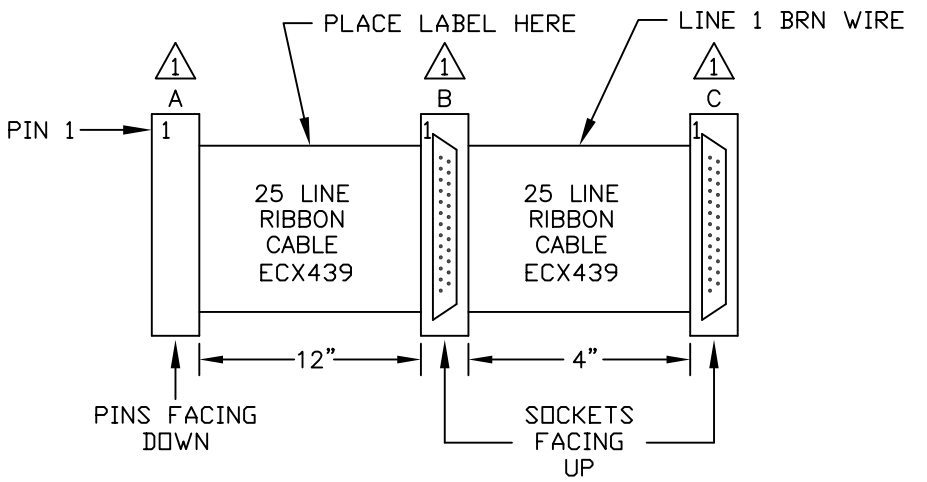
LABELS FOR
C15520 CABLES:
(1) REQUIRED




LABELS FOR
ES13321 CABLES:
(1) REQUIRED



NOTE DIRECTION OF CONNECTORS ON RIBBON CABLE.



PROPRIETARY INFORMATION THIS DRAWING IS THE PROPERTY OF AEROTECH, INC. AND IS SUBMITTED IN CONFIDENCE AND SHALL NOT BE REPRODUCED NOR COPIED NOR DISCLOSED TO OTHERS UNDER PENALTY OF LAW.		 AEROTECH, INC. 101 Zeta Drive Pittsburgh, PA. 15238 (412)963-7470 TWX710-795-3125	
TOLERANCES ON FRACTIONS DECIMALS ANGLES 0 TO 6 ± 1/32 .XX ± .01 ± 0-30' OVER 6 ± 1/16 .XXX ± .005		ENCORDER ADAPTER CABLE CABLE: ENC FB-25DU-25DUJS- 25DUJS-FR-ADP	
RMS FINISH <input checked="" type="checkbox"/> EXCEPT AS NOTED		PART CODE	SIZE
DRAWN	RWR	8/15/01	B
CHECKED	JLD	8/15/01	630B1552
APPD.	JLD	8/15/01	C
SCALE N/A		FILE NAME	SHEET
630B1552C1.dwg		1 OF 1	