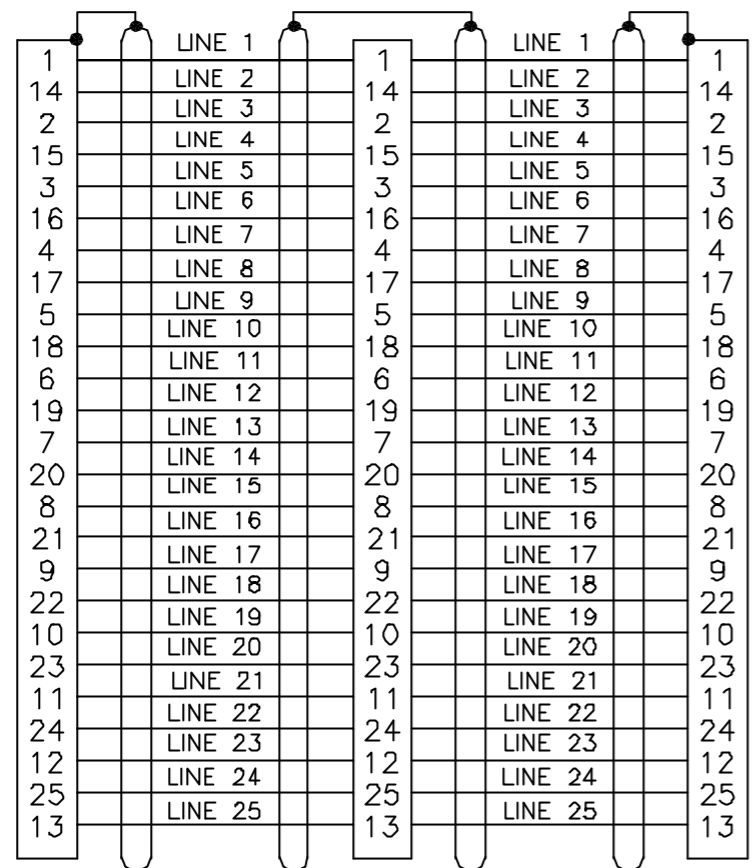


TO CONTROLLER ENC/LMT INPUT A
 PARALLEL FEEDBACK CONNECTOR B
 PARALLEL FEEDBACK CONNECTOR C

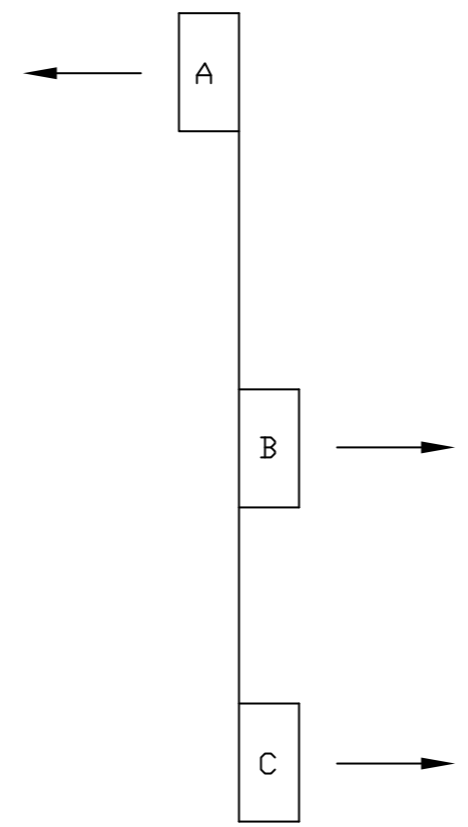


25 LINE MALE "D" ECK00105 SCREWLOCKS, EIZ00294

25 LINE FEMALE "D" ECK01221 JACKSOCKETS, ECK00363

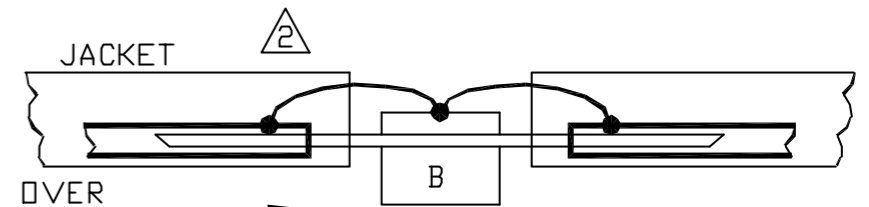
25 LINE FEMALE "D" ECK00308 JACKSOCKETS, ECK00363

1 SIDE VIEW

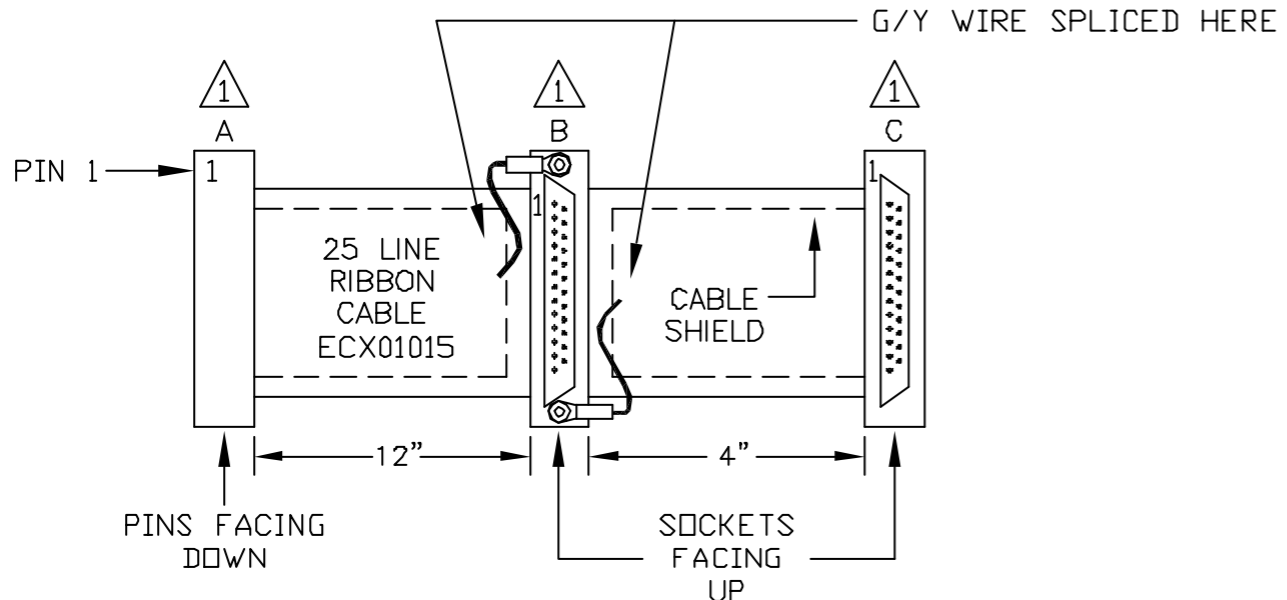


1 NOTE DIRECTION OF CONNECTORS ON RIBBON CABLE.

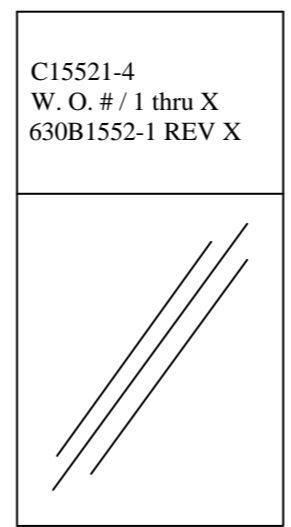
2 CONNECT SHIELDS AT BOTH OUTER ENDS TO STRAIN RELIEFS. JUMPER SHIELD ACROSS MIDDLE CONNECTOR BY USING TWO SHORT PIECES OF #22 G/Y. SOLDER TO SHIELD FOIL ON BOTH SIDES OF MIDDLE CONNECTOR, THEN COVER SPLICES BY SLIDING JACKET BACK OVER JOINT AREA. TERMINATE EACH PIECE WITH A RING LUG MOUNTED TO SOCKET SIDE OF CONNECTOR LOCATED ON OPPOSITE ENDS OF CONNECTOR B.




SLIDE JACKET BACK OVER AREA OF SPLICE



LABELS FOR C15521 CABLES: (1) REQUIRED



CABLE WRAP LABEL: EIA00113

PROPRIETARY INFORMATION THIS DRAWING IS THE PROPERTY OF AEROTECH, INC. AND IS SUBMITTED IN CONFIDENCE AND SHALL NOT BE REPRODUCED NOR COPIED NOR DISCLOSED TO OTHERS UNDER PENALTY OF LAW.			 AEROTECH, INC. 101 Zeta Drive Pittsburgh, PA. 15238 (412)963-7470 TWX710-795-3125		
TOLERANCES ON FRACTIONS 0 TO 6 ± 1/32 OVER 6 ± 1/16 DECIMALS .XX ± .01 .XXX ± .005 ANGLES ± 0-30°			SHIELDED ENCODER ADAPTER CABLE: ENC FB-25DU-25DUJS-25DUJS-SR-ADP		
RMS FINISH		EXCEPT AS NOTED		PART CODE	
DRAWN		EJB		C15521-4	
CHECKED		AGS		SIZE B	
APPD.		AGS		630B1552-1	
SCALE N/A		FILE NAME 630B1552-101.dwg		REV. -	
SHEET 1 OF 1					