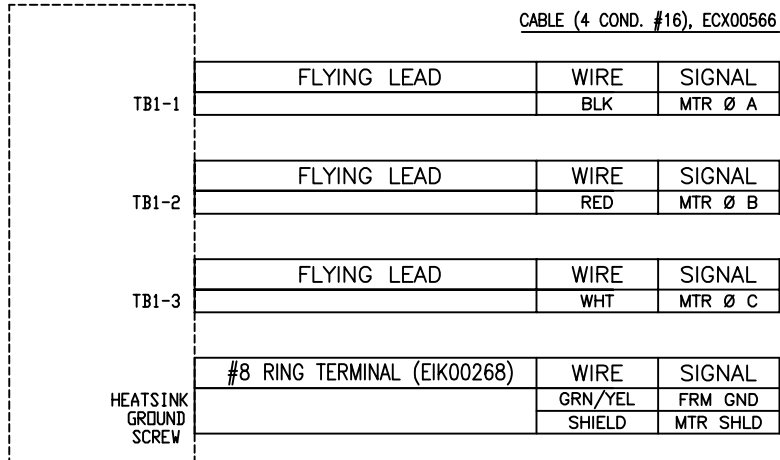


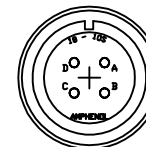
REVISIONS				
REV.	ZONE	DESCRIPTION	DATE	
A	C-3	ADDED ECN1166	3/95	LTR
B	C-4	ADDED ECN1210	06-05-95	---
C		ADDED ECN1286	8/16/95	WJG
D		ADDED ECN1427 & ECN1707	02-15-96	---
E		ADDED ECN2761	7/7/97	NTC
F		NO CHANGE THIS SHEET	10/97	NTC
G		ADDED ECN4911	7/00	NTC
H		ADDED ECN5548	4/01	RDS
I		ADDED ECN7951A	5/26/04	JAB
J		ADDED ECN11277	07/08	JFRANEY

TYPICAL AMPLIFIER CONNECTIONS

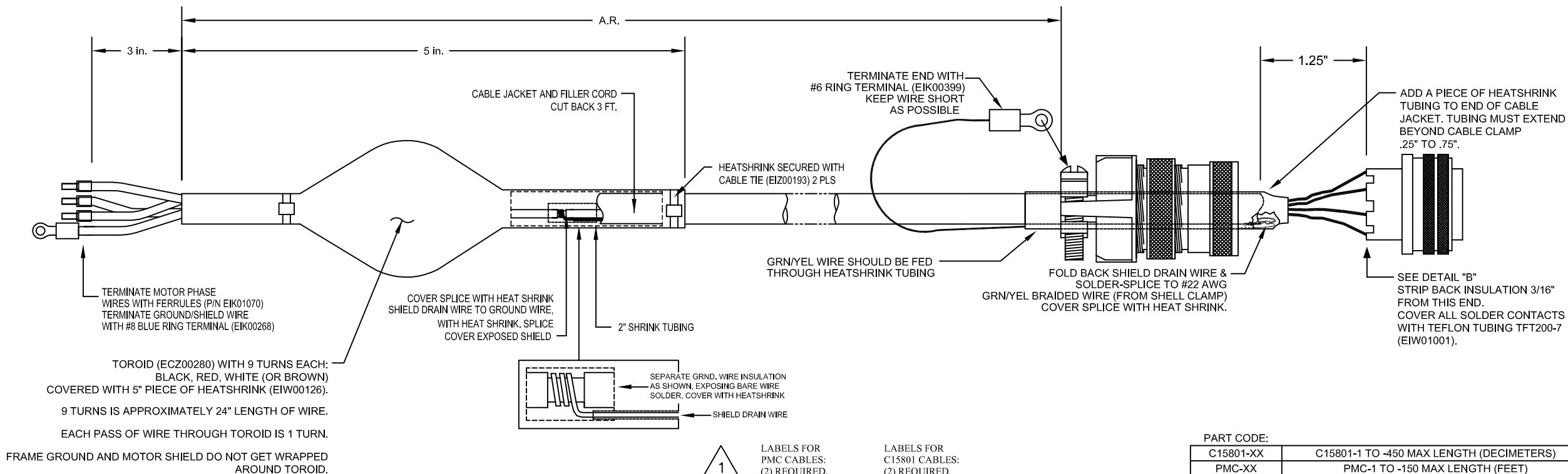


STRAIGHT PLUG MS3106A-18 (MCM00475)
 INSERT MS18-10S (MCM00495)
 CLAMP 97-3057-1010 (MCM00477)
 BUSHING AN3055-18-10 (MCM00481)

SIGNAL	WIRE	SOCKET
MTR Ø C	WHT	C
MTR Ø B	RED	B
FRM GND	GRN/YEL	D
MTR Ø A	BLK	A

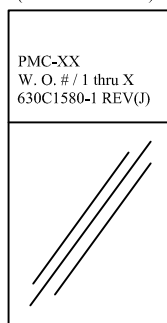


DETAIL "A"
 VIEWED FROM WIRE SIDE OF CONNECTOR
 AMPHENOL SOCKET INSERT MS18-10S (MCM495)

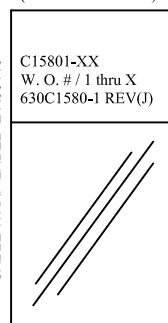


1

LABELS FOR PMC CABLES:
 (2) REQUIRED,
 (1 AT EACH END)



LABELS FOR C15801 CABLES:
 (2) REQUIRED,
 (1 AT EACH END)



PROPRIETARY INFORMATION
 THIS DRAWING IS THE PROPERTY OF AEROTECH, INC. AND IS SUBMITTED IN CONFIDENCE AND SHALL NOT BE REPRODUCED NOR COPIED NOR DISCLOSED TO OTHERS UNDER PENALTY OF LAW.

TOLERANCES ON FRACTIONS DECIMALS ANGLES
 0 TO 6 ±.32 .XX ±.01 ± 0-30'
 OVER 6 ±.16 .XXX ±.005

RMS FINISH EXCEPT AS NOTED

DRAWN	JAB	5/26/04
CHECKED	AGS	5/26/04
APPD.	AGS	5/26/04

PART CODE:	
C15801-XX	C15801-1 TO -450 MAX LENGTH (DECIMETERS)
PMC-XX	PMC-1 TO -150 MAX LENGTH (FEET)



AEROTECH, INC. 101 Zeta Drive
 Pittsburgh, PA. 15238
 (412)963-7470
 www.aerotech.com

LIGHT DUTY BRUSHLESS MOTOR CABLE
 WITH TOROID FILTER AND 16 AWG CONDUCTORS
 CABLE: BL MTR FLT 4MS LD (FORMALLY PMC)

PART CODE	SIZE	REV.
C15801-XX	C	J
SCALE	FILE NAME	SHEET
NTS	630C1580-1J1.DWG	1 OF 1