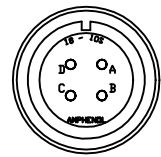
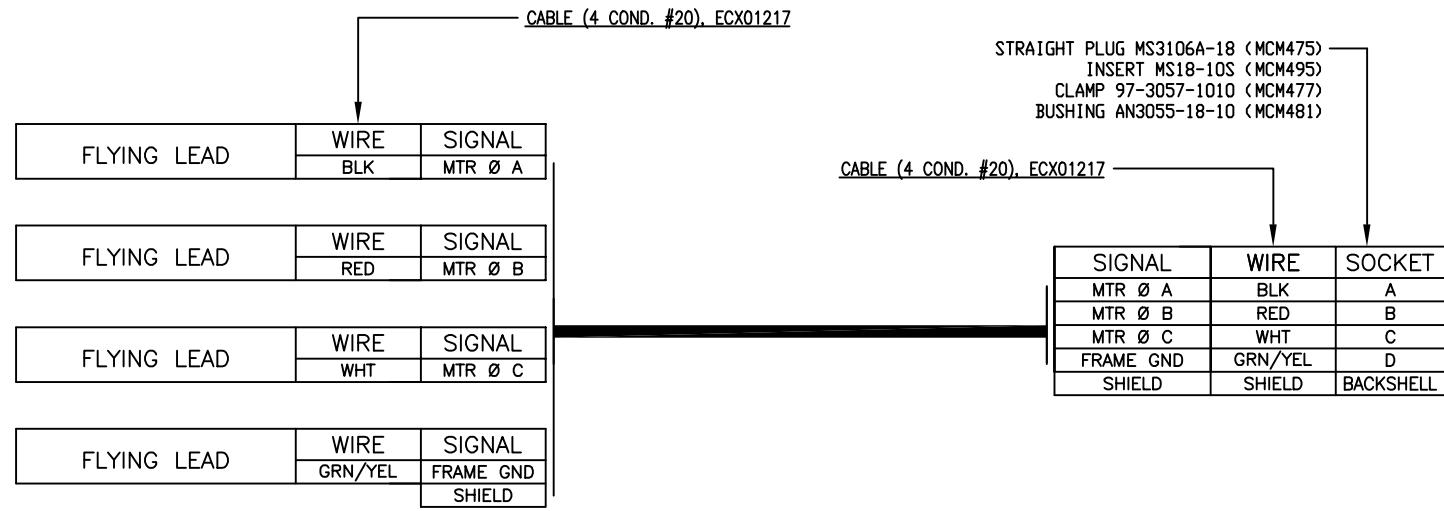
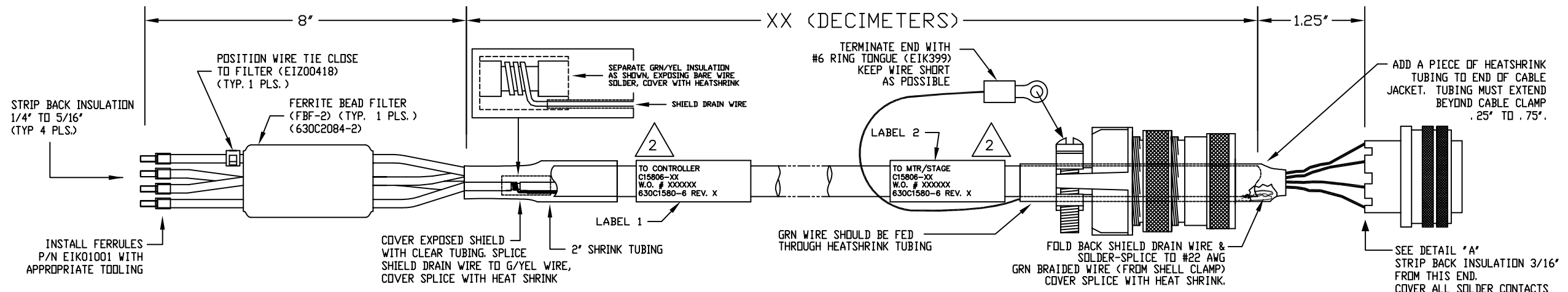


REVISIONS				
REV.	ZONE	DESCRIPTION	DATE	DRAWN



**DETAIL "A"**

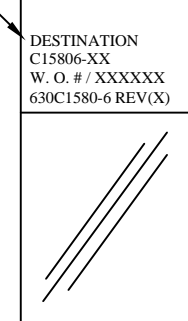
VIEWED FROM WIRE SIDE OF CONNECTOR  
AMPHENOL SOCKET INSERT MS18-10S (MCM495)



1 XX (DECIMETER) X .328 = FT.  
STARTING LENGTH = XX FT + 1.25 FT.  
BOM VALUE = STARTING LENGTH + 1 FT.

2 SEE LABELS 1 & 2 FOR DESTINATION

LABELS FOR C15806-XX CABLES:  
(2) REQUIRED,  
(1 AT EACH END)



CABLE WRAP LABEL: EIA00113

PART CODE:	
C15806-XX	C15806-1 TO -450 MAX LENGTH (DECIMETERS)

PROPRIETARY INFORMATION  
THIS DRAWING IS THE PROPERTY  
OF AEROTECH, INC. AND IS  
SUBMITTED IN CONFIDENCE AND  
SHALL NOT BE REPRODUCED NOR  
COPIED NOR DISCLOSED TO OTHERS  
UNDER PENALTY OF LAW.



AEROTECH, INC. 101 Zeta Drive  
Pittsburgh, PA. 15238  
(412)963-7470  
www.aerotech.com

TOLERANCES ON FRACTIONS	DECIMALS	ANGLES
0 TO 6 ± 1/32	.XX ± .01	± 0-30'
OVER 6 ± 1/16	.XXX ± .005	
RMS FINISH	EXCEPT AS NOTED	

**BRUSHLESS MOTOR CABLE**  
**450 DECIMETERS (150') MAX LENGTH**  
**CABLE: BL MTR-FLB-4MS-LP1-MAX450DM**

DRAWN	JRF	04/05	PART CODE	SIZE	REV.
CHECKED	DES	04/05	C15806-XX	C	-
APPD.	JLD	04/05	SCALE NTS	FILE NAME	SHEET
				630C1580-601.dwg	1 OF 1