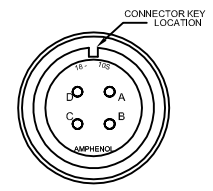


REVISIONS			
REV.	DESCRIPTION	DATE	DRAWN

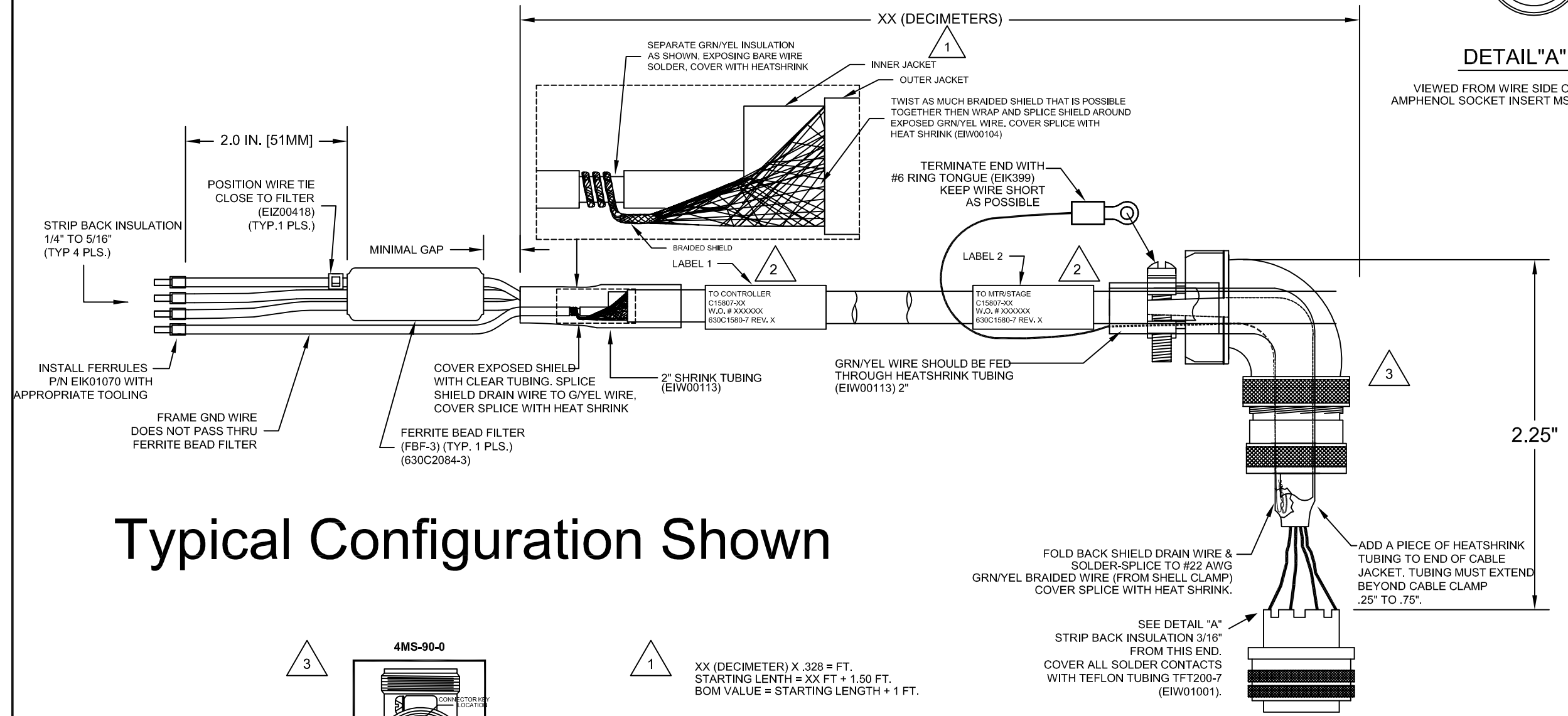
SHELL ANGLE PLUG MS3108B-18 (MCM01041)
 INSERT MS18-10S (MCM00495)
 CLAMP 97-3057-1010 (MCM00477)
 BUSHING AN3055-18-10 (MCM00481)

FLYING LEAD	WIRE	SIGNAL
	BLK	MTR Ø A
FLYING LEAD	WIRE	SIGNAL
	RED	MTR Ø B
FLYING LEAD	WIRE	SIGNAL
	WHT	MTR Ø C
FLYING LEAD	WIRE	SIGNAL
	GRN	FRAME GND
		SHIELD

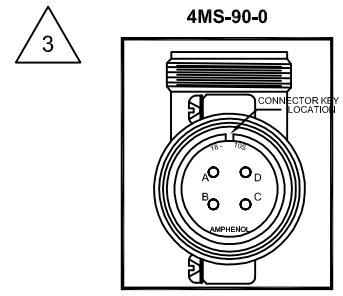
SIGNAL	WIRE	SOCKET
MTR Ø A	BLK	A
MTR Ø B	RED	B
MTR Ø C	WHT	C
FRAME GND	GRN	D
SHIELD	SHIELD	BACKSHELL



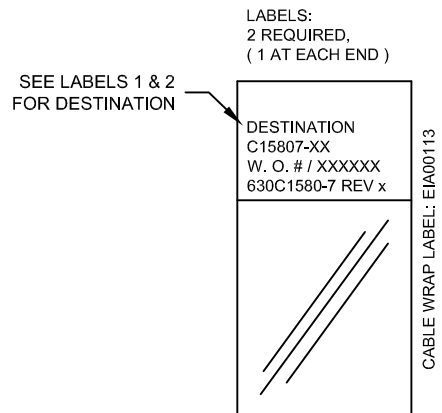
DETAIL "A"
 VIEWED FROM WIRE SIDE OF CONNECTOR
 AMPHENOL SOCKET INSERT MS18-10S (MCM00495)



Typical Configuration Shown



1 XX (DECIMETER) X .328 = FT.
 STARTING LENGTH = XX FT + 1.50 FT.
 BOM VALUE = STARTING LENGTH + 1 FT.



LENGTH	CONTROL END	MOTOR END
-50	-FLB	-4MS-90-0

PROPRIETARY INFORMATION THIS DRAWING IS THE PROPERTY OF AEROTECH, INC. AND IS SUBMITTED IN CONFIDENCE AND SHALL NOT BE REPRODUCED NOR COPIED NOR DISCLOSED TO OTHERS UNDER PENALTY OF LAW.			AEROTECH, INC. 101 Zeta Drive Pittsburgh, PA. 15238 (412)963-7470 www.aerotech.com	
TOLERANCES ON FRACTIONS DECIMALS ANGLES 0 TO 6 1/32 .XX ±01 ± 0-30' OVER 6 ±1/16 .XXX ±005			BRUSHLESS MOTOR CABLE 450 DECIMETERS (150') MAX LENGTH CABLE: CONFIGURED, BL MTR-FLB-4MS-MAX450DM	
RMS FINISH	✓	EXCEPT AS NOTED	PART CODE	SIZE
DRAWN	TES	4/15	C15807	C
CHECKED	AGS	4/15	630C1580-7	
APPD.	TES	4/15	SCALE	FILE NAME
			630C1580-7.dwg	SHEET 1 OF 1