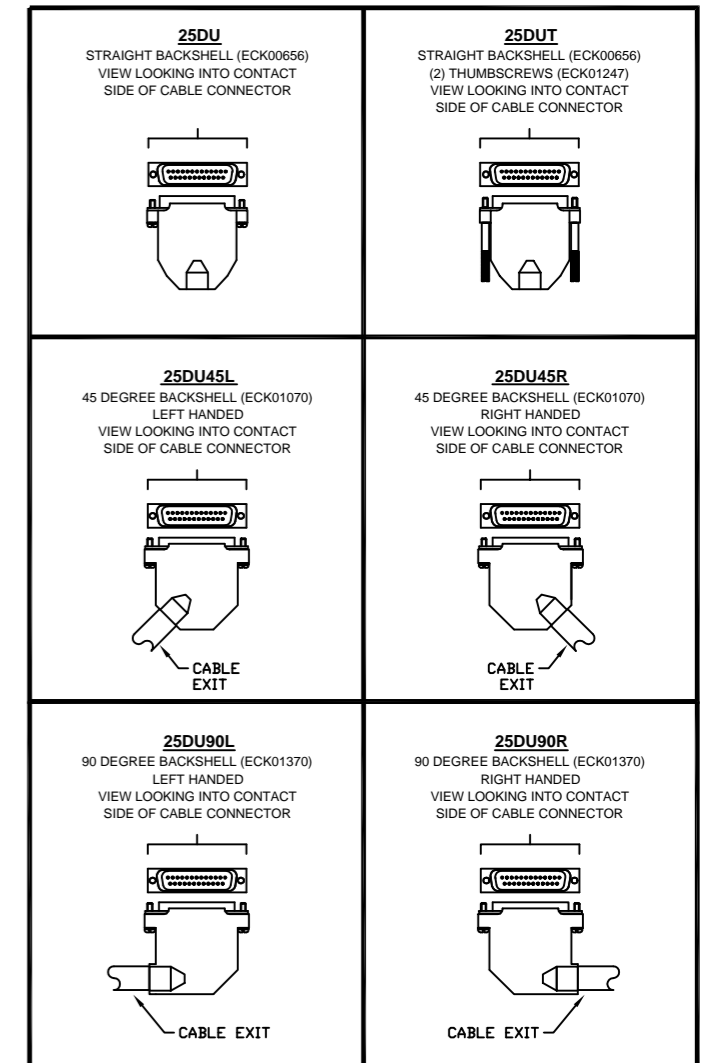


REVISIONS				
REV.	ZONE	DESCRIPTION	DATE	DRAWN
A		ADDED ECN9107	1/16/06	EJB

TERMINATION CHART



AMP PLUG #745496-2 (ECK00786)  
BACKSHELL: SEE TERMINATION CHART

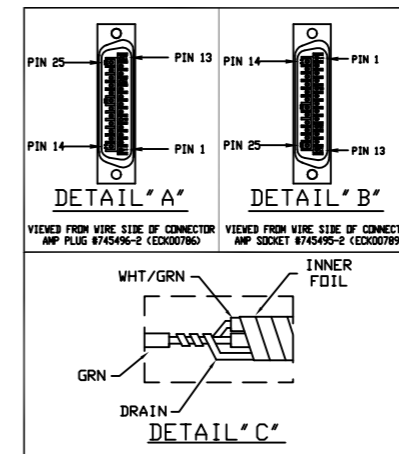
CONSOLIDATED (STANDARD)  
(26 COND.), ECK01182

PIN	WIRE	SIGNAL
13	BLU/BLK	BRAKE -
12	WHT	CW/+ LMT
11	GRY/RED	HC
10	GRY/BLK	HA
9	#22 RED/BLK	SETUP (-5V)
8	WHT/YEL	TACH-
7	BRN	MKR
6	WHT/BRN	MKR-N
5	WHT/GRY	HB
4	GRN/BLK	COM
3(1/2)	#22 VIO	ENC +5V
3(2/2)	#22 WHT/VIO	ENC +5V
2	BLK	EXT SD
1	OUTER SHIELD	OUTER SHIELD
14	RED	COS
15	WHT/RED	COS-N
16	#24 RED/ORN	LMT +5V
17	ORN	SIN
18	WHT/ORN	SIN-N
19	YEL	TACH+
20	#24 BLK/ORN	LMT COM
21(1/3)	#22 GRN	ENC COM
21(2/3)	#22 WHT/GRN	ENC COM
21(3/3)	INNER SHIELD	INNER SHIELD
22	PINK	HM LMT
23	YEL/BLK	ENC FLT
24	GRY	CCW/- LMT
25	BLU	BRAKE+

AMP SOCKET #745495-2 (ECK00789)  
BACKSHELL: SEE TERMINATION CHART

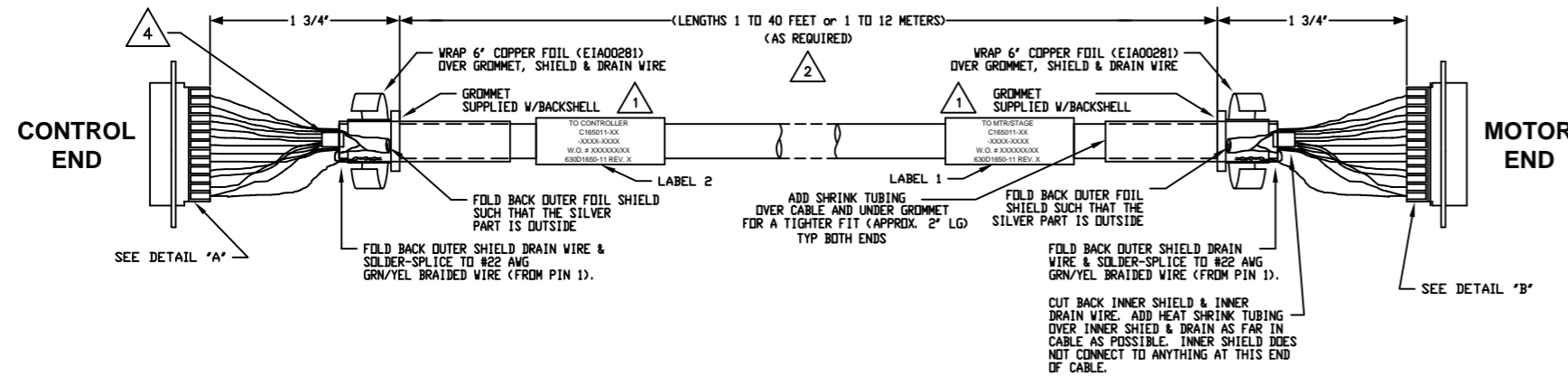
CONSOLIDATED (STANDARD)  
(26 COND.), ECK01182

SIGNAL	WIRE	SOCKET
OUTER SHIELD	OUTER SHIELD	1
EXT SD	BLK	2
ENC +5V	#22 VIO	3(1/2)
ENC +5V	#22 WHT/VIO	3(2/2)
COM	GRN/BLK	4
HB	WHT/GRY	5
MKR-N	WHT/BRN	6
MKR	BRN	7
TACH-	WHT/YEL	8
SETUP (-5V)	#22 RED/BLK	9
HA	GRY/BLK	10
HC	GRY/RED	11
CW/+ LMT	WHT	12
BRAKE-	BLU/BLK	13
BRAKE+	BLU	25
CCW/- LMT	GRY	24
ENC FLT	YEL/BLK	23
HM LMT	PINK	22
ENC COM	#22 GRN	21(1/2)
ENC COM	#22 WHT/GRN	21(2/2)
LMT COM	#24 BLK/ORN	20
TACH+	YEL	19
SIN-N	WHT/ORN	18
SIN	ORN	17
LMT +5V	#24 RED/ORN	16
COS-N	WHT/RED	15
COS	RED	14
INNER SHIELD	INNER SHIELD	N.C.



CONTROL END

MOTOR END

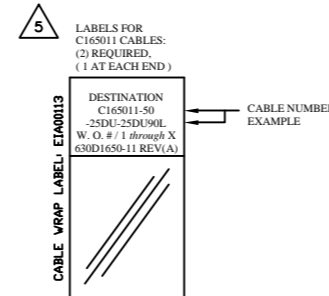


CONFIGURED CABLE PROCEDURE:

THE PURPOSE OF THIS DRAWING IS TO DEFINE VARIOUS BACKSHELL AND SCREWLOCK TYPES AS REQUIRED BY THE SHOP TRAVELLER.

- 1.) LOCATE THE SHOP TRAVELLER FOR CABLE TO BE MANUFACTURED.
- 2.) USING SHOP TRAVELLER AND TERMINATION CHART AT RIGHT:
  - a.) DETERMINE 'CONTROL END' TERMINATION.
  - b.) DETERMINE 'MOTOR END' TERMINATION.
- 5.) USING THE ABOVE INFORMATION, MANUFACTURE CABLE WITH APPROPRIATE TERMINATIONS.
- 6.) LABEL CABLE WITH NEW CONFIGURED PART NUMBER PER NOTE 5. FOLLOWING THE 'CONFIGURED PART NUMBER DEFINITION' SHOWN AT FAR RIGHT.

- 4 UNWRAP INNER FOIL SHIELD AS FAR BACK AS POSSIBLE. SEPARATE GREEN WIRE INSULATION. SOLDER-SPLICE WHT/GRN & INNER DRAIN WIRES TO GREEN WIRE. WRAP INNER FOIL SHIELD OVER SOLDER-SPLICE. COVER INNER BUNDLE. SPLICE & INNER FOIL WITH SHRINK TUBING AS FAR IN CABLE AS POSSIBLE. CONNECT GREEN WIRE TO PIN 21. SEE DETAIL 'C'.  
NOTE: INNER SHIELD MUST NOT TOUCH OUTER SHIELD OR BACKSHELL.
- 3 FOR CRIMP TOOL USE AMP HANDLE ASSY 58074-1 WITH AMP HEAD ASSY 58063-2
- 2 STARTING CABLE LENGTH = 6 in. BEYOND SPECIFIED LENGTH OF CABLE DO NOT EXCEED LENGTH OF 40 FT FOR THIS DESIGN
- 1 USE #2 GROMMET WITH 2 DOTS WHICH IS SUPPLIED W/BACKSHELL



- MOTOR END (1)
- 25DU - STRAIGHT BACKSHELL
  - 25DUT - STRAIGHT BACKSHELL w/THUMBSCREWS
  - 25DU45L - 45 DEGREE BACKSHELL - LEFT HAND
  - 25DU45R - 45 DEGREE BACKSHELL - RIGHT HAND
  - 25DU90L - 90 DEGREE BACKSHELL - LEFT HAND
  - 25DU90R - 90 DEGREE BACKSHELL - RIGHT HAND
- CONTROL END (1)
- 25DU - STRAIGHT BACKSHELL
  - 25DUT - STRAIGHT BACKSHELL w/THUMBSCREWS
  - 25DU45L - 45 DEGREE BACKSHELL - LEFT HAND
  - 25DU45R - 45 DEGREE BACKSHELL - RIGHT HAND
  - 25DU90L - 90 DEGREE BACKSHELL - LEFT HAND
  - 25DU90R - 90 DEGREE BACKSHELL - RIGHT HAND

LENGTH (1)  
xx - WHERE xx = LENGTH IN DECIMETERS

BASE PART (1)

CONFIGURED PART NUMBER → C165011-50-25DU-25DU90L

CONFIGURED PART NUMBER DEFINITION  
NUMBER SHOWN FOR EXAMPLE ONLY

PROPRIETARY INFORMATION  
THIS DRAWING IS THE PROPERTY OF AEROTECH, INC. AND IS SUBMITTED IN CONFIDENCE AND SHALL NOT BE REPRODUCED NOR COPIED NOR DISCLOSED TO OTHERS UNDER PENALTY OF LAW.

AEROTECH®  
AEROTECH, INC. 101 Zeta Drive  
Pittsburgh, PA. 15238  
(412)963-7470  
www.aerotech.com

CONFIGURED BRUSHLESS FEEDBACK CABLE  
CABLE: BL FB-25DU-25DU-MAX120DM

TOLERANCES ON FRACTIONS	DECIMALS	ANGLES
0 TO 6 ± 1/32	XX ± .01	± 0-30°
OVER 6 ± 1/16	XXX ± .005	

RMS FINISH	EXCEPT AS NOTED
DRAWN	EJB 11/4/04
CHECKED	JLD 11/4/04
APPD.	JLD 11/4/04

PART CODE	SIZE	REV.
C165011-XX	D	A

SCALE NTS FILE NAME 630D1650-11A1.DWG SHEET 1 OF 1