

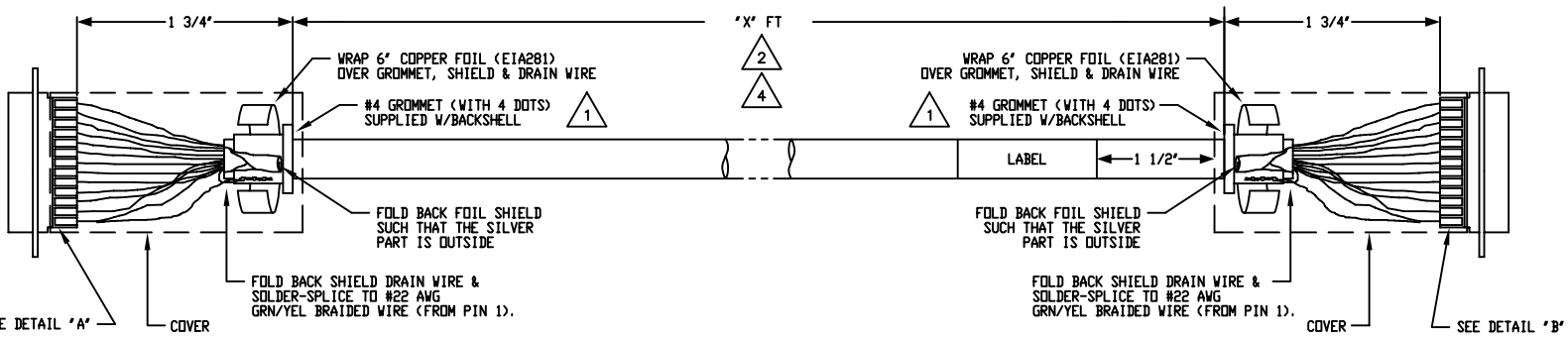
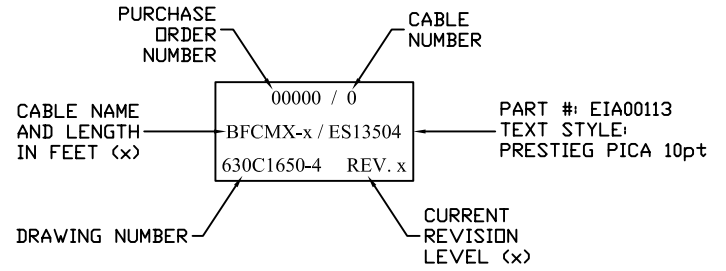
REVISIONS				
REV.	ZONE	DESCRIPTION	DATE	DRAWN
A	-	NO CHANGE THIS SHEET	1/98	---
B	-	NO CHANGE THIS SHEET	1/98	---
C	-	NO CHANGE THIS SHEET	1/98	---
D	-	NO CHANGE THIS SHEET	3/98	NTC
E	-	ADDED ECN4063	3-3-99	---
F	-	NO CHANGE THIS SHEET	1/18/00	JAB
G	-	ADDED NOTE 4 TO CLARIFY DETERMINATION OF FINISHED CABLE LENGTH (ECN5192)	10/00	RWR
H	-	ADDED ECN5373	1/01	CJC

AMP PLUG #745496-2 (ECK786)
 AMPHENOL BACKSHELL #17-1726-2 (ECK656)
 CONSOLIDATED #5720
 (20 COND. #24), ECX581

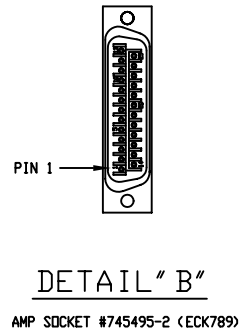
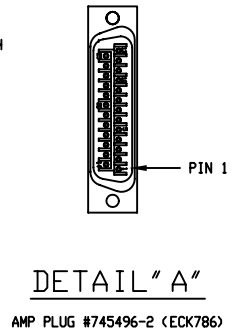
AMP SOCKET #745495-2 (ECK789)
 AMPHENOL BACKSHELL #17-1726-2 (ECK656)
 CONSOLIDATED #5720
 (20 COND. #24), ECX581

PIN	WIRE	SIGNAL
13	-	-
12	WHT	CW/+ LMT
11	BLU/WHT	HC
10	RED/WHT	HA
9	-	-
8	BLU	ENC COM
7	BLU/BLK	MKR
6	ORN/BLK	MKR-N
5	BLK/WHT	HB
4	-	-
3	RED/BLK	ENC +5V
2	RED/GRN	EXT SD
1	SHIELD	SIG SHLD / FRM GND
14	WHT/RED	COS
15	ORN/RED	COS-N
16	RED	LMT +5V
17	BLU/RED	SIN
18	BLK/RED	SIN-N
19	-	-
20	GRN	LMT COM
21	GRN/BLK	ENC COM
22	ORN	HM LMT-N
23	-	-
24	BLK	CCW/- LMT
25	-	-

SIGNAL	WIRE	SOCKET
SIG SHLD / FRM GND	SHIELD	1
EXT SD	RED/GRN	2
ENC +5V	RED/BLK	3
ENC COM	BLU	4
HB	BLK/WHT	5
MKR-N	ORN/BLK	6
MKR	BLU/BLK	7
-	-	8
-	-	9
HA	RED/WHT	10
HC	BLU/WHT	11
CW/+ LMT	WHT	12
-	-	13
-	-	25
CCW/- LMT	BLK	24
-	-	23
HM LMT	ORN	22
ENC COM	GRN/BLK	21
LMT COM	GRN	20
-	-	19
SIN-N	BLK/RED	18
SIN	BLU/RED	17
LMT +5V	RED	16
COS-N	ORN/RED	15
COS	WHT/RED	14



- 4** FINISHED CABLE LENGTH IS DEFINED BY PART NUMBER
 EXAMPLE: BFCMX-7/ES13504 IS TO BE A 7 FT FINISHED LENGTH
- 3** FOR CRIMP TOOL USE AMP HANDLE ASSY 58074-1
 WITH AMP HEAD ASSY 58063-2
- 2** STARTING CABLE LENGTH = 'X' FT + 6 INCHES
- 1** USE #4 GROMMET WITH 4 DOTS AS SHOWN BELOW
 WHICH IS SUPPLIED W/BACKSHELL



PROPRIETARY INFORMATION
 THIS DRAWING IS THE PROPERTY
 OF AEROTECH, INC. AND IS
 SUBMITTED IN CONFIDENCE AND
 SHALL NOT BE REPRODUCED NOR
 COPIED NOR DISCLOSED TO OTHERS
 UNDER PENALTY OF LAW.

AEROTECH® AEROTECH, INC. 101 Zeta Drive
 Pittsburgh, PA. 15238
 (412)963-7470 TWX710-795-3125

**RUDOLPH
 FEEDBACK CABLE
 BFCMX-X/ES13504**

TOLERANCES ON FRACTIONS DECIMALS ANGLES 0 TO 6 ± 1/32 .XX ± .01 ± 0-30' OVER 6 ± 1/16 .XXX ± .005	RMS FINISH <input checked="" type="checkbox"/> EXCEPT AS NOTED	PART CODE -	SIZE C	REV. H
DRAWN DC 11/97	CHECKED JLD 10/00	APPD. JLD 10/00	SCALE NTS	FILE NAME 3C1650H4.DWG
SHEET 1 OF 1				