

REVISIONS				
REV.	ZONE	DESCRIPTION	DATE	DRAWN

AMP PLUG #745496-2 (ECK786)  
 AMPHENDL BACKSHELL #17-1726-2 (ECK656)  
 CONSOLIDATED #5720  
 (20 COND. #24), ECK581

PIN	WIRE	SIGNAL
13	-	-
12	WHT	CW/+ LMT
11	BLU/WHT	HC
10	RED/WHT	HA
9	-	-
8	BLU	COM
7	BLU/BLK	MKR
6	ORN/BLK	MKR-N
5	BLK/WHT	HB
4	-	-
3 1/2	RED/BLK	1/2 +5V
3 2/2	WHT/BLK	2/2 +5V
2	RED/GRN	EXT SD
1	SHIELD	SIG SHLD / FRM GND
14	WHT/RED	COS
15	ORN/RED	COS-N
16	RED	+5V
17	BLU/RED	SIN
18	BLK/RED	SIN-N
19	-	-
20	GRN	COM
1/2 21	GRN/BLK	COM
2/2 21	GRN/WHT	COM
22	ORN	HM LMT-N
23	-	-
24	BLK	CCW/- LMT
25	-	-

SEE DETAIL 'C'

SEE DETAIL 'C'

AMP SOCKET #745495-2 (ECK789)  
 AMPHENDL BACKSHELL #17-1726-2 (ECK656)

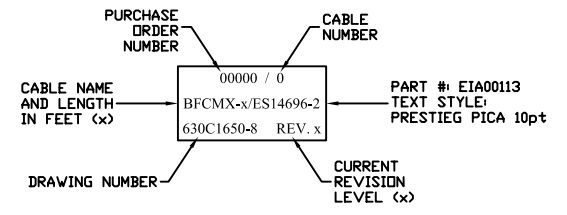
CONSOLIDATED #5720  
 (20 COND. #24), ECK581

SIGNAL	WIRE	SOCKET
SIG SHLD / FRM GND	SHIELD	1
EXT SD	RED/GRN	2
1/2 +5V	RED/BLK	3 1/2
2/2 +5V	WHT/BLK	3 2/2
-	-	4
HB	BLK/WHT	5
MKR-N	ORN/BLK	6
MKR	BLU/BLK	7
COM	BLU	8
-	-	9
HA	RED/WHT	10
HC	BLU/WHT	11
CW/+ LMT	WHT	12
-	-	13
-	-	25
CCW/- LMT	BLK	24
-	-	23
HM LMT	ORN	22
COM	GRN/BLK	1/2 21
COM	GRN/WHT	2/2 21
COM	GRN	20
-	-	19
SIN-N	BLK/RED	18
SIN	BLU/RED	17
+5V	RED	16
COS-N	ORN/RED	15
COS	WHT/RED	14

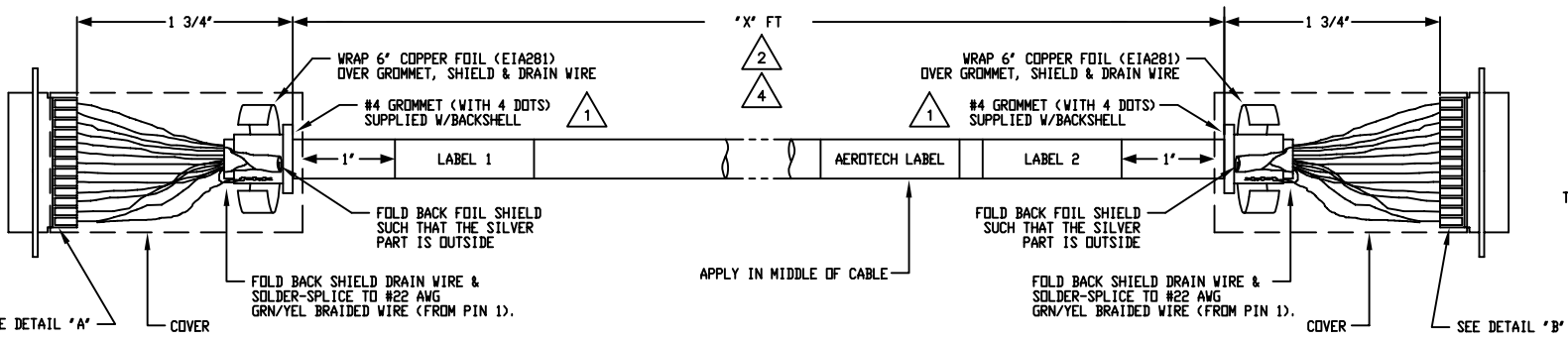
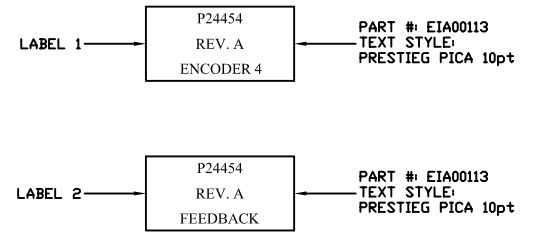
SEE DETAIL 'C'

SEE DETAIL 'C'

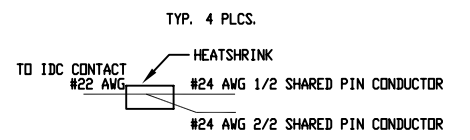
### AEROTECH LABEL



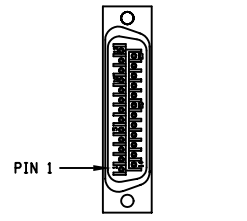
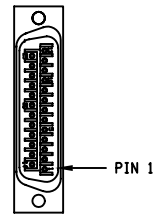
### RUDOLPH LABELS



### DETAIL 'C'



- 4 FINISHED CABLE LENGTH IS DEFINED BY PART NUMBER  
 EXAMPLE: BFCMX-7/ES14696-2 IS TO BE A 7 FT FINISHED LENGTH
- 3 FOR CRIMP TOOL USE AMP HANDLE ASSY 58074-1 WITH AMP HEAD ASSY 58063-2
- 2 STARTING CABLE LENGTH = 'X' FT + 6 INCHES
- 1 USE #4 GROMMET WITH 4 DOTS AS SHOWN BELOW WHICH IS SUPPLIED W/BACKSHELL



PROPRIETARY INFORMATION  
 THIS DRAWING IS THE PROPERTY  
 OF AEROTECH, INC. AND IS  
 SUBMITTED IN CONFIDENCE AND  
 SHALL NOT BE REPRODUCED NOR  
 COPIED NOR DISCLOSED TO OTHERS  
 UNDER PENALTY OF LAW.

**AEROTECH**  
 AEROTECH, INC. 101 Zeta Drive  
 Pittsburgh, PA. 15238  
 (412)963-7470 TWX710-795-3125

TOLERANCES ON FRACTIONS DECIMALS ANGLES	
0 TO 6 ± 1/32 .XX ± .01 ± 0-30'	
OVER 6 ± 1/16 .XXX ± .005	
RMS FINISH	EXCEPT AS NOTED
DRAWN	SCD 8/02
CHECKED	AGS 8/02
APPD.	AGS 8/02

RUDOLPH FEEDBACK CABLE			
BFCMX-X/ES14696-2			
(CABLE LENGTH 1 TO 30 FEET)			
PART CODE	SIZE	REV.	
BFCMX-X/ES14696-2	C	-	
630C1650-8			
SCALE NTS	FILE NAME 630C1650-801.DWG	SHEET 1 OF 1	