

REVISIONS				
REV.	ZONE	DESCRIPTION	DATE	APPROVAL
-	-	-	-	-

AMP PLUG #745496-2 (ECK786)  
 AMPHENOL BACKSHELL #17-1726-2 (ECK656)

AMP SOCKET #745495-2 (ECK789)  
 AMPHENOL BACKSHELL #17-1726-2 (ECK656)

CONSOLIDATED #5737-CL  
 (25 COND. #22), ECX01044

CONSOLIDATED #5737-CL  
 (25 COND. #22), ECX01044

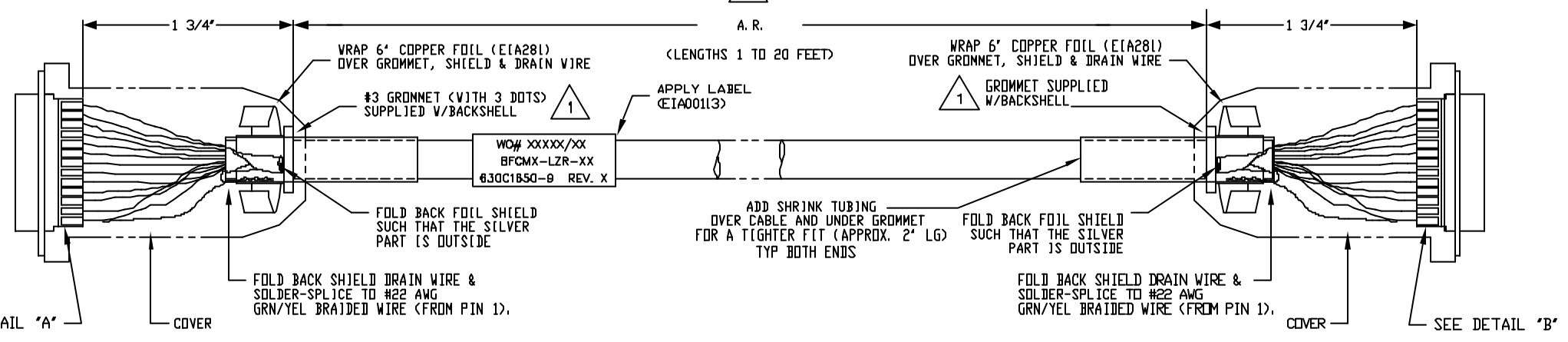
PIN	WIRE	SIGNAL
13	GRN/WHT	BRAKE -
12	WHT	CW/+ LMT
11	BLU/WHT	HC
10	RED/WHT	HA
9	BLK/WHT/RED	LASER -5V
8	-	-
7	BLU/BLK	MKR
6	ORN/BLK	MKR-N
5	BLK/WHT	HB
4	-	-
-	-	-
3(3/4)	RED/BLK/WHT	ENC +5V
3(2/4)	WHT/BLK/RED	ENC +5V
3(1/4)	RED/BLK	ENC +5V
2	RED/GRN	EXT SD
1	SHIELD	SIG SHLD / FRM GND

SIGNAL	WIRE	SOCKET
SIG SHLD / FRM GND	SHIELD	1
EXT SD	RED/GRN	2
ENC +5V	RED/BLK	3(1/4)
ENC +5V	WHT/BLK/RED	3(2/4)
ENC +5V	RED/BLK/WHT	3(3/4)
-	-	-
-	-	4
HB	BLK/WHT	5
MKR-N	ORN/BLK	6
MKR	BLU/BLK	7
-	-	8
LASER -5V	BLK/WHT/RED	9
HA	RED/WHT	10
HC	BLU/WHT	11
CW/+ LMT	WHT	12
BRAKE-	GRN/WHT	13

14	WHT/RED	COS
15	ORN/RED	COS-N
16	RED	LMT +5V
17	BLU/RED	SIN
18	BLK/RED	SIN-N
19	-	-
20	GRN	LMT COM
21(1/4)	GRN/BLK	ENC COM
21(2/4)	BLU	ENC COM
21(3/4)	GRN/BLK/WHT	ENC COM
21(4/4)	ORN/GRN	ENC COM
22	ORN	HM LMT-N
23	-	-
24	BLK	CCW/- LMT
25	WHT/BLK	BRAKE+

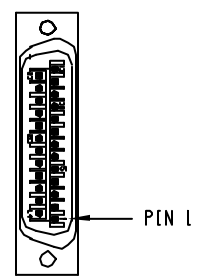
BRAKE+	WHT/BLK	25
CCW/- LMT	BLK	24
-	-	23
HM LMT	ORN	22
ENC COM	ORN/GRN	21(4/4)
ENC COM	GRN/BLK/WHT	21(3/4)
ENC COM	BLU	21(2/4)
ENC COM	GRN/BLK	21(1/4)
LMT COM	GRN	20
-	-	19
SIN-N	BLK/RED	18
SIN	BLU/RED	17
LMT +5V	RED	16
COS-N	ORN/RED	15
COS	WHT/RED	14

UNUSED WIRES (ECXD1044): NDNE

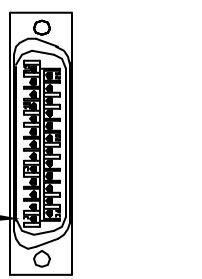


QTY (1)  
 BFCMX-LZR-15

- 3 FOR CRIMP TOOL USE AMP HANDLE ASSY 58074-1 WITH AMP HEAD ASSY 58063-2
- 2 STARTING CABLE LENGTH = 6' LONGER THAN REQUIRED LENGTH.
- 1 FOR (ECX1044) USE #3 GROMMET WITH 3 DOTS AS SHOWN BELOW WHICH IS SUPPLIED W/BACKSHELL



DETAIL "A"  
 AMP PLUG #745496-2 (ECK786)



DETAIL "B"  
 AMP SOCKET #745495-2 (ECK789)

CUSTOMER NAME: XXXXXXXXXXXX  
 ORDER NUMBER: XXXXXX  
 APPROVED BY: XXX  
 RELEASE DATE: XX/XX/XX CUST FILE NAME: XXXXXX 630C1650-901.dwg

PROPRIETARY INFORMATION  
 THIS DRAWING IS THE PROPERTY  
 OF AEROTECH, INC. AND IS  
 SUBMITTED IN CONFIDENCE AND  
 SHALL NOT BE REPRODUCED NOR  
 COPIED NOR DISCLOSED TO OTHERS  
 UNDER PENALTY OF LAW.



AEROTECH, INC. 101 Zeta Drive  
 Pittsburgh, PA. 15238  
 (412)963-7470 TWX710-795-3125

TOLERANCES ON  
 FRACTIONS DECIMALS ANGLES  
 0 TO 6 ± 1/32 .XX ± .01 ± 0-30'  
 OVER 6 ± 1/16 .XXX ± .005

## BFCMX-LZR-1 TO 20 BRUSHLESS FEEDBACK CABLE

RMS FINISH  EXCEPT AS NOTED

DRAWN	JAB	6/28/02
CHECKED	AGS	6/28/02
APPD.	AGS	6/28/02

PART CODE	SIZE	REV.
BFCMX-LZR-XX	C	-
FILE NAME	SHEET	1 OF 1
630C1650-9	630C1650-901.DWG	