

REVISIONS				
REV.	ZONE	DESCRIPTION	DATE	DRAWN
A		ADDED ECN3989	2/8/99	EJB
B		ADDED ECN4872	6/13/00	NTC
C		ADDED ECN6942	05/03	JRF

AMP PLUG, 206044-1 (ECK131)
AMP BACKSHELL, 206070-1 (ECK134)
#16-18 PINS, 66098-7 (EIK194)

CABLE (4 COND. #16), ECX566

ALPHA #5440/4

ALPHA #1452/16 OR CONSOLIDATED #1707

PIN	WIRE	WIRE	SIGNAL
14	-	-	-
13	-	-	-
12	-	-	-
11	-	-	-
10	-	-	-
9	-	-	-
8	SHIELD	SHIELD	MTR SHLD
7	-	-	-
6	-	-	-
5	BRN	WHT	MTR Ø C
4	RED	RED	MTR Ø B
3	BLK	BLK	MTR Ø A
2	-	-	-
1	ORN	GRN	FRM GND

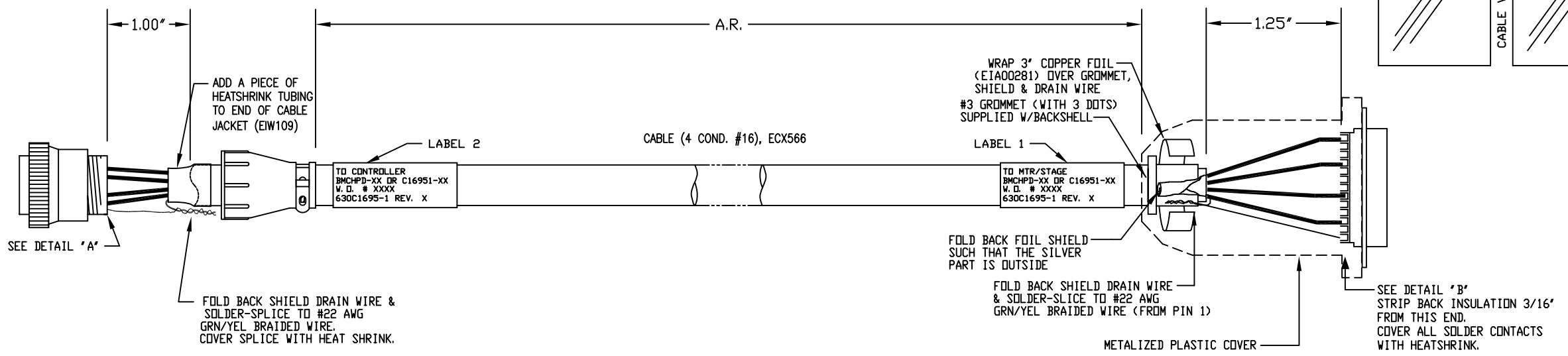
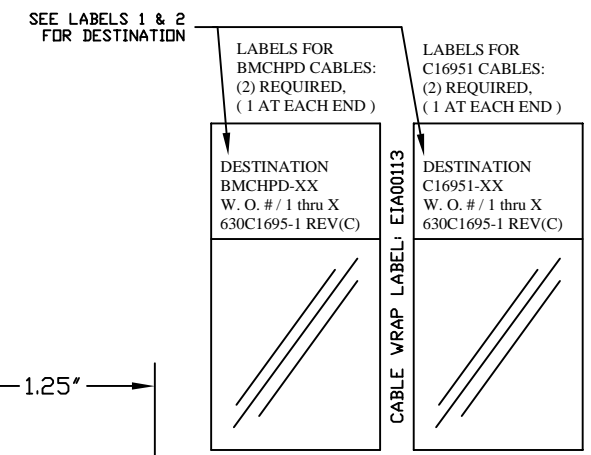
HI POWER "D" FEMALE
P/N DBMM9W4S (ECK00657)
+ CONTACTS (SOCKETS), #DM53744-6 (ECK00659)
BACKSHELL (ECK00656)

CABLE (4 COND. #16), ECX566

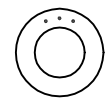
ALPHA #5440/4

ALPHA #1452/16 OR CONSOLIDATED #1707

SIGNAL	WIRE	WIRE	SOCKET
MTR Ø A	BLK	BLK	A1
MTR Ø B	RED	RED	A2
MTR Ø C	WHT	BRN	A3
FRM GND	GRN	ORN	A4
MTR SHLD	SHIELD	SHIELD	1

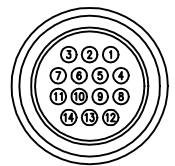


3 USE #3 GROMMET WITH 3 DOTS AS SHOWN BELOW WHICH IS SUPPLIED W/BACKSHELL



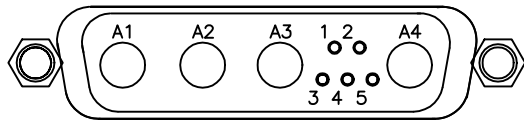
2 FOR CRIMP TOOL USE AMP HANDLE ASSY 90277-1 OR USE AMP CRIMPER MODEL #565435-5 WITH AMP HEAD ASSY 66098

1 STARTING CABLE LENGTH = 15 FT 5 IN



DETAIL "A"

VIEWED FROM WIRE SIDE OF CONNECTOR
AMP PLUG #206044-1 (ECK131)



DETAIL "B"

VIEWED FROM WIRE SIDE OF CONNECTOR
HI POWER "D" FEMALE (ECK00657)

PART CODE:

C16951-XX	C16951-1 TO -450 MAX LENGTH (DECIMETERS)
BMCHPD-XX	BMCHPD-1 TO -150 MAX LENGTH (FEET)

PROPRIETARY INFORMATION
THIS DRAWING IS THE PROPERTY OF AEROTECH, INC. AND IS SUBMITTED IN CONFIDENCE AND SHALL NOT BE REPRODUCED NOR COPIED NOR DISCLOSED TO OTHERS UNDER PENALTY OF LAW.



AEROTECH, INC. 101 Zeta Drive
Pittsburgh, PA. 15238
(412)963-7470
www.aerotech.com

TOLERANCES ON FRACTIONS DECIMALS ANGLES

0 TO 6 ± 1/32	.XX ± .01	± 0-30'
OVER 6 ± 1/16	.XXX ± .005	

RMS FINISH EXCEPT AS NOTED

DRAWN	NTC	10/97
CHECKED	DES	6/00
APPD.	CC	6/00

BRUSHLESS MOTOR CABLE (14 PIN TO HIGH PWR "D")
450 DECIMETERS (150') MAX LENGTH
CABLE: BL MTR-14P-4DU-MAX450DM

PART CODE	SIZE	REV.
SEE ABOVE	C	C
630C1695-1		
SCALE NTS	FILE NAME	SHEET
	630C1695-1C1.dwg	1 OF 1