

REVISIONS				
REV.	ZONE	DESCRIPTION	DATE	DRAWN

AMP PLUG, 206044-1 (ECK131)
AMP BACKSHELL, 206070-1 (ECK134)
#20-24 PINS, 66102-7 (EIK00192)

CABLE (4 COND. #20), ECX01217
CONSOLIDATED

PIN	WIRE	SIGNAL
14	-	-
13	-	-
12	-	-
11	-	-
10	-	-
9	-	-
8	SHIELD	MTR SHLD
7	-	-
6	-	-
5	WHT	MTR Ø C
4	RED	MTR Ø B
3	BLK	MTR Ø A
2	-	-
1	GRN/YEL	FRM GND

HI POWER 'D' FEMALE
P/N DBMM9W4S (ECK00657)
+ CONTACTS (SOCKETS), #DM53744-6 (ECK00659)
BACKSHELL (ECK00656)

CABLE (4 COND. #20), ECX01217
CONSOLIDATED

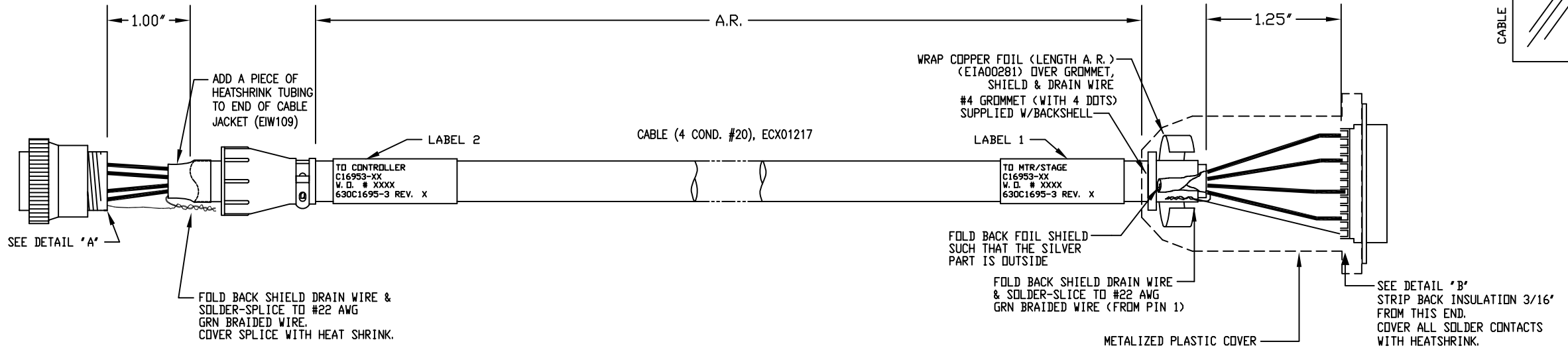
SIGNAL	WIRE	SOCKET
MTR Ø A	BLK	A1
MTR Ø B	RED	A2
MTR Ø C	WHT	A3
FRM GND	GRN/YEL	A4
MTR SHLD	SHIELD	1

SEE LABELS 1 & 2 FOR DESTINATION

LABELS FOR C16953 CABLES: (2) REQUIRED. (1 AT EACH END)

DESTINATION
C16953-XX
W. O. # / 1 thru X
630C1695-3 REV(X)

CABLE WRAP LABEL: EIA00113

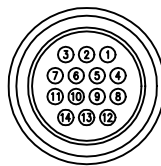


3 USE #4 GROMMET WITH 4 DOTS AS SHOWN BELOW WHICH IS SUPPLIED W/BACKSHELL

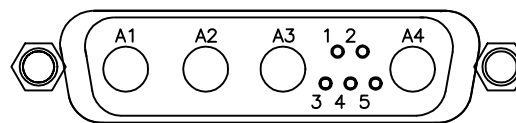


2 FOR CRIMP TOOL USE AMP HANDLE ASSY 90277-1 OR USE AMP CRIMPER MODEL #565435-5 WITH AMP HEAD ASSY 66098

1 STARTING CABLE LENGTH EQUAL DESIRED CABLE LENGTH PLUS 6 INCHES.
EXAMPLE: 50 DM = 197"
CABLE LENGTH
STARTING = 197" + 6" = 203" = 16'-11"
(BOM VALUE = 16.9' + 1' = 17.9')



DETAIL "A"
VIEWED FROM WIRE SIDE OF CONNECTOR
AMP PLUG #206044-1 (ECK131)



SOLDER SIDE
DETAIL "B"
VIEWED FROM WIRE SIDE OF CONNECTOR
HI POWER 'D' FEMALE (ECK00657)

PROPRIETARY INFORMATION THIS DRAWING IS THE PROPERTY OF AEROTECH, INC. AND IS SUBMITTED IN CONFIDENCE AND SHALL NOT BE REPRODUCED NOR COPIED NOR DISCLOSED TO OTHERS UNDER PENALTY OF LAW.		AEROTECH, INC. 101 Zeta Drive Pittsburgh, PA. 15238 (412)963-7470 www.aerotech.com	
TOLERANCES ON FRACTIONS DECIMALS ANGLES 0 TO 6 ± 1/32 .XX ± .01 ± 0-30' OVER 6 ± 1/16 .XXX ± .005		LOW POWER BRUSHLESS MOTOR CABLE 450 DECIMETERS (148FT) MAX LENGTH (BL MTR-14P-4DU-LP1-MAX450DM)	
RMS FINISH <input checked="" type="checkbox"/> EXCEPT AS NOTED		PART CODE C16953-XX	SIZE C
DRAWN JRF	02/05	630C1695-3	
CHECKED DES	02/05	SCALE NTS	FILE NAME 630C1695-301.dwg
APPD. JLD	02/05	SHEET 1 OF 1	REV. -