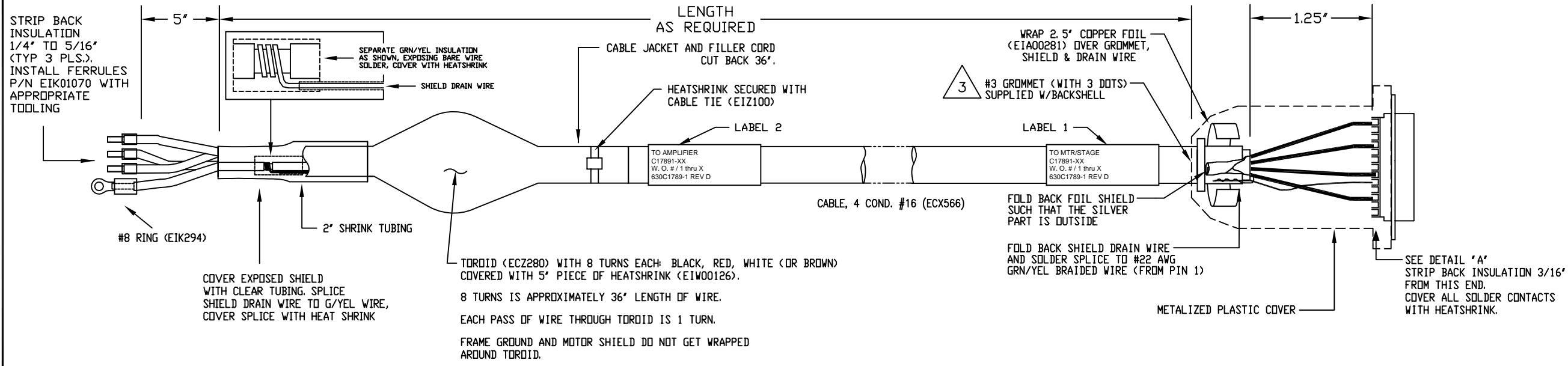
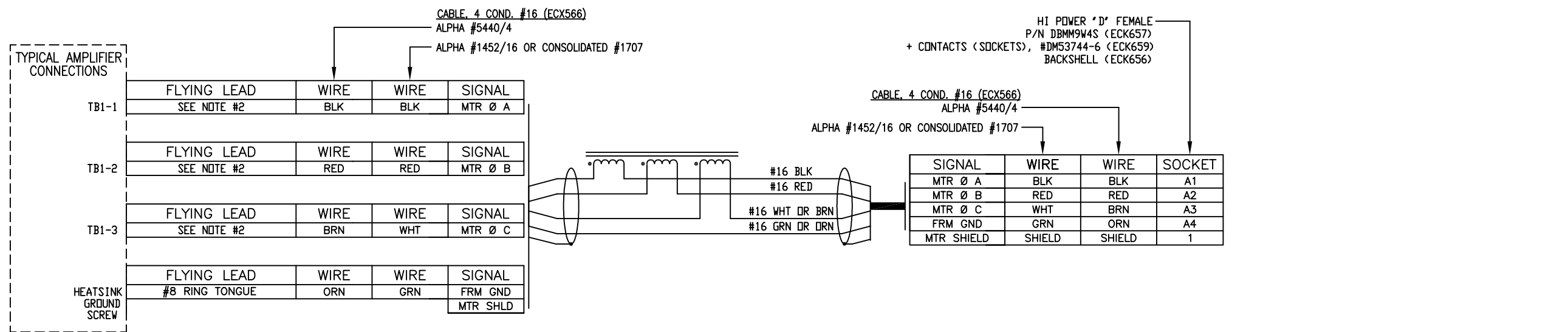
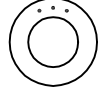


REVISIONS				
REV.	ZONE	DESCRIPTION	DATE	DRAWN
A		ADDED ECN#3994	2/10/99	JAB
B		ADDED ECN#4873	6/13/00	NTC
C		36' CABLE JCK & FILLER LGTH WAS 29'. ECN5206	3/28/01	DJS/DH
D		ADDED ECN#7503	11/5/03	RWR

(NEW LABEL INFORMATION)

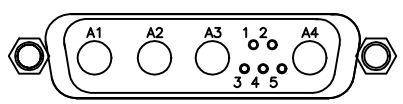


3 USE #3 GROMMET WITH 3 DOTS AS SHOWN BELOW WHICH IS SUPPLIED W/BACKSHELL



2 STRIP INSULATION BACK 1/4" AND INSTALL FERRULES EIK1070.

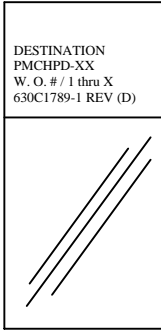
1 STARTING CABLE LENGTH = 3 FT. LONGER THAN FIN. LENGTH



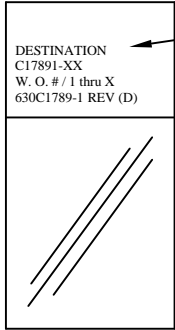
SOLDER SIDE
DETAIL "A"

VIEWED FROM WIRE SIDE OF CONNECTOR
HI POWER "D" FEMALE (ECK657)

LABELS FOR PMCHPD CABLES: (2) REQUIRED, (1 AT EACH END)



LABELS FOR C17891 CABLES: (2) REQUIRED, (1 AT EACH END)



SEE LABELS 1 & 2 FOR DESTINATION

PART CODE:		
C17891-XX	C17891-10 TO 450	LENGTHS 1 TO 45 MTR
PMCHPD-XX	PMCHPD-1 TO 150	LENGTHS 1 TO 150 FT

PROPRIETARY INFORMATION
THIS DRAWING IS THE PROPERTY OF AEROTECH, INC. AND IS SUBMITTED IN CONFIDENCE AND SHALL NOT BE REPRODUCED NOR COPIED NOR DISCLOSED TO OTHERS UNDER PENALTY OF LAW.



AEROTECH, INC. 101 Zeta Drive
Pittsburgh, PA. 15238
412-963-7470 FAX: 412-963-7459
www.AEROTECH.com

BRUSHLESS MOTOR CABLE
450 DECIMETERS (150') MAX LENGTH
CABLE:BL MTR-FLT-4DU

TOLERANCES ON FRACTIONS DECIMALS ANGLES		
0 TO 6 ± 1/32	.XX ± .01	± 0-30'
OVER 6 ± 1/16	.XXX ± .005	
RMS FINISH	✓	EXCEPT AS NOTED
DRAWN	DC	09/98
CHECKED	DES	06/00
APPD.	CC	06/00

PART CODE	SIZE	REV.
SEE ABOVE	C	D
630C1789-1		
SCALE NTS	FILE NAME 630C1789-1D1.dwg	SHEET 1 OF 1