

REVISIONS				
REV.	ZONE	DESCRIPTION	DATE	DRAWN
A		ECN 9322, DOCUMENTATION CHANGE ONLY WAS DRAWING FOR PMC1HPD SEE 630C1789-3 FOR PMC1HPD	5/22/06	DCM

CABLE: ECX01193
(LUTZE PN 118067, HI FLEX,
4 COND 16G, SLD, PUR)

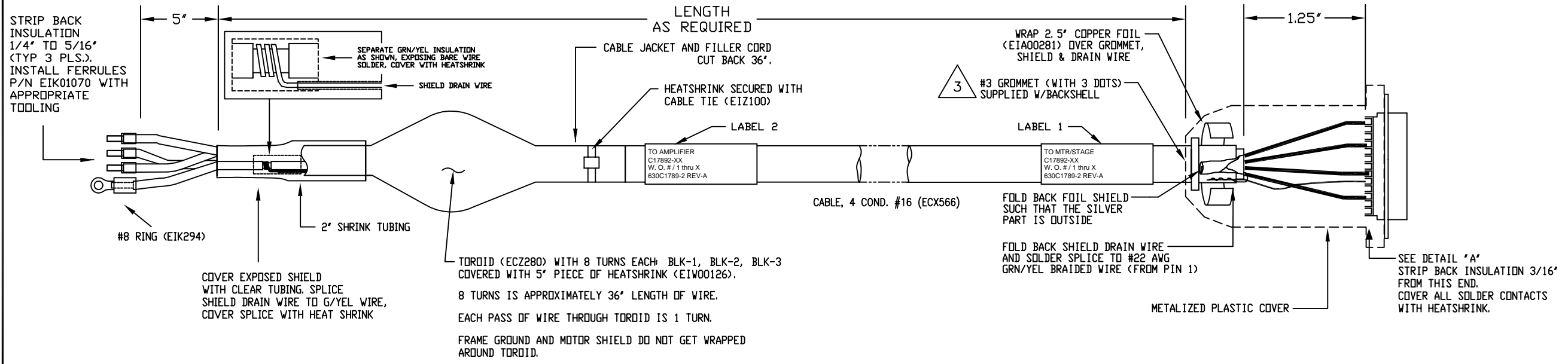
HI POWER "D" FEMALE
P/N DBMM9W4S (ECK657)
+ CONTACTS (SOCKETS), #DM53744-6 (ECK659)
BACKSHELL (ECK656)

CABLE: ECX01193
(LUTZE PN 118067, HI FLEX,
4 COND 16G, SLD, PUR)

TYPICAL AMPLIFIER CONNECTIONS

	FLYING LEAD	WIRE	SIGNAL
TB1-1	SEE NOTE #2	BLK-1	MTR Ø A
TB1-2	SEE NOTE #2	BLK-2	MTR Ø B
TB1-3	SEE NOTE #2	BLK-3	MTR Ø C
HEATSINK GROUND SCREW	#8 RING TONGUE	GRN/YEL	FRM GND MTR SHLD

SIGNAL	WIRE	SOCKET
MTR Ø A	BLK-1	A1
MTR Ø B	BLK-2	A2
MTR Ø C	BLK-3	A3
FRM GND	GRN/YEL	A4
MTR SHIELD	SHIELD	1

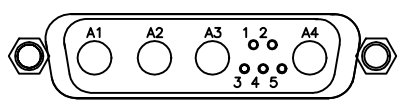


3 USE #3 GROMMET WITH 3 DOTS AS SHOWN BELOW WHICH IS SUPPLIED W/BACKSHELL



2 STRIP INSULATION BACK 1/4" AND INSTALL FERRULES EIK1070.

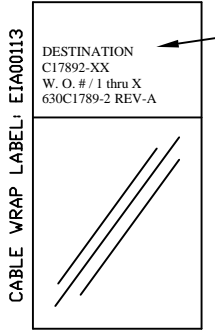
1 STARTING CABLE LENGTH = 3 FT. LONGER THAN FIN. LENGTH



SOLDER SIDE
DETAIL "A"

VIEWED FROM WIRE SIDE OF CONNECTOR
HI POWER "D" FEMALE (ECK657)

LABELS FOR C17892 CABLES: (2) REQUIRED, (1 AT EACH END)



SEE LABELS 1 & 2 FOR DESTINATION

PART CODE:

C17892-XX	C17892-10 TO 450	LENGTHS 1 TO 45 MTR
-----------	------------------	---------------------

PROPRIETARY INFORMATION
THIS DRAWING IS THE PROPERTY OF AEROTECH, INC. AND IS SUBMITTED IN CONFIDENCE AND SHALL NOT BE REPRODUCED NOR COPIED NOR DISCLOSED TO OTHERS UNDER PENALTY OF LAW.



AEROTECH, INC. 101 Zeta Drive
Pittsburgh, PA. 15238
412-963-7470 FAX: 412-963-7459
www.AEROTECH.com

BRUSHLESS MOTOR CABLE
450 DECIMETERS (150') MAX LENGTH
CABLE:BL MTR-FLT-4DU-HF-MAX450DM

TOLERANCES ON	FRACTIONS	DECIMALS	ANGLES
0 TO 6	± 1/32	.XX ± .01	± 0-30'
OVER 6	± 1/16	.XXX ± .005	

RMS FINISH	EXCEPT AS NOTED
✓	

DRAWN	DC	09/98
CHECKED	DES	06/00
APPD.	CC	06/00

PART CODE	SIZE	REV.
SEE ABOVE	C	A
SCALE NTS		FILE NAME 630C1789-2A1.dwg
SHEET		1 OF 1