

| REVISIONS | | | | |
|-----------|------|-------------|------|----------|
| SYM. | ZONE | DESCRIPTION | DATE | APPROVAL |
| | | | | |

BA SERIES SERVO AMP

TYPICAL INTERCONNECT

NOTE: SYSTEM CONFIGURATION DETERMINES WHETHER APPLICABLE SIGNAL CONNECTS TO BA10/20 OR NOT.

CONNECTIONS TO P1-6 (COS-N) AND P1-19 (SIN-N) ARE NOT APPLICABLE ON REV.- OR REV. A AMPLIFIER PC BDS (690D1499).

| P1 | FLYING LEAD | WIRE | SIGNAL |
|----|-------------|---------|----------|
| 1 | FLYING LEAD | SHIELD | SIG SHLD |
| 2 | FLYING LEAD | RED/BLK | ENC +5V |
| 3 | | | |
| 4 | FLYING LEAD | RED/WHT | HA |
| 5 | FLYING LEAD | WHT/RED | COS |
| 6 | FLYING LEAD | ORN/RED | COS-N |
| 7 | | | |
| 8 | | | |
| 9 | | | |
| 10 | | | |
| 11 | | | |
| 12 | | | |
| 13 | | | |
| 14 | FLYING LEAD | GRN/BLK | ENC COM |
| 15 | | GRN | LMT COM |
| 16 | | BLK/WHT | HB |
| 17 | | BLU/WHT | HC |
| 18 | | BLU/RED | SIN |
| 19 | | BLK/RED | SIN-N |
| 20 | FLYING LEAD | RED | LMT +5V |

| FLYING LEAD | WIRE | SIGNAL |
|-------------|---------|-----------|
| FLYING LEAD | WHT/BLK | BRK+ |
| | GRN/WHT | BRK- |
| | BLU/BLK | MKR |
| | ORN/BLK | MKR-N |
| | WHT | CW/+ LMT |
| | BLK | CCW/- LMT |
| FLYING LEAD | ORN | HM LMT |

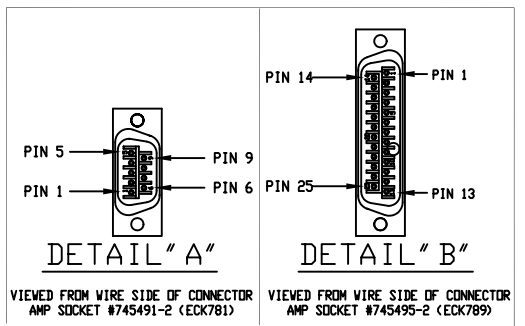
AMP SOCKET, #745495-2 (ECK789)
 AMPHENDL BACKSHELL #17-1726-2 (ECK656)

| SIGNAL | WIRE | SOCKET |
|----------|---------|--------|
| SIG SHLD | SHIELD | 1 |
| | | 2 |
| ENC +5V | RED/BLK | 3 |
| | | 4 |
| HB | BLK/WHT | 5 |
| MKR-N | ORN/BLK | 6 |
| MKR | BLU/BLK | 7 |
| | | 8 |
| | | 9 |
| HA | RED/WHT | 10 |
| HC | BLU/WHT | 11 |
| | | 12 |
| BRK- | GRN/WHT | 13 |

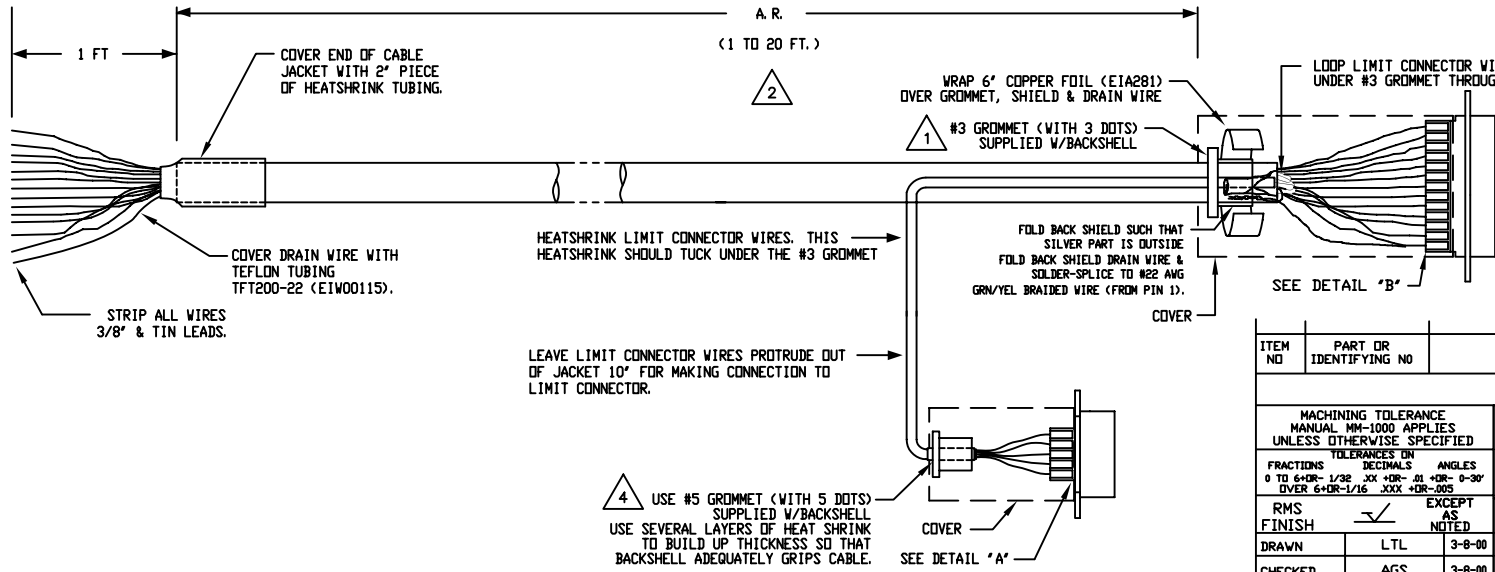
| | | |
|---------|---------|----|
| BRK+ | WHT/BLK | 25 |
| | | 24 |
| | | 23 |
| | | 22 |
| ENC COM | GRN/BLK | 21 |
| | | 20 |
| | | 19 |
| SIN-N | BLK/RED | 18 |
| SIN | BLU/RED | 17 |
| | | 16 |
| COS-N | ORN/RED | 15 |
| COS | WHT/RED | 14 |

AMP SOCKET, #745491-2 (ECK781)
 AMPHENDL BACKSHELL #17-1724-2 (ECK01021)

| SIGNAL | WIRE | SOCKET |
|-----------|------|--------|
| LMT +5V | RED | 1 |
| LMT COM | GRN | 2 |
| CW/+ LMT | WHT | 3 |
| HM LMT | ORN | 4 |
| CCW/- LMT | BLK | 5 |



- 4 USE #5 GROMMET WITH 5 DOTS AS SHOWN BELOW WHICH IS SUPPLIED W/BACKSHELL
- 3 FOR CRIMP TOOL USE AMP HANDLE ASSY 58074-1 WITH AMP HEAD ASSY 58063-2
- 2 STARTING CABLE LENGTH = 24 in. BEYOND SPECIFIED LENGTH OF CABLE DO NOT EXCEED LENGTH OF 20 FT FOR THIS DESIGN
- 1 USE #3 GROMMET WITH 3 DOTS AS SHOWN BELOW WHICH IS SUPPLIED W/BACKSHELL



| ITEM NO | PART OR IDENTIFYING NO | DESCRIPTION | SPEC | MATERIAL OR NOTE | QTY REQD |
|---|------------------------|---|--|----------------------------|--------------|
| LIST OF MATERIAL | | | | | |
| MACHINING TOLERANCE MANUAL MM-1000 APPLIES UNLESS OTHERWISE SPECIFIED | | AEROTECH, INC. 101 Zeta Drive Pittsburgh, PA. 15238 (412)963-7470 TWX710-795-3125 | | | |
| FRACTIONS DECIMALS ANGLES 0 TO 6+DR- 1/32 .XX +DR- .01 +DR- 0-30' OVER 6+DR- 1/16 .XXX +DR- .005 | | | | | |
| RMS FINISH | ✓ | EXCEPT AS NOTED | BRUSHLESS MOTOR/ENCODER/ LIMITS/HALL EFFECT CABLE PFCO-1 TO 20 (1 TO 20 FT.) | | |
| DRAWN | LTL | 3-8-00 | CODE IDENT. NO. | SIZE | REV. |
| CHECKED | AGS | 3-8-00 | PFCO | C | 630C1858-1 |
| DESIGN | | | | | |
| ENGRG | | | | | |
| PRDD | | | | | |
| D. A. | | | | | |
| APPD | AGS | 3-8-00 | SCALE NTS | FILE NAME 630C1858-101.dwg | SHEET 1 OF 1 |

PROPRIETARY INFORMATION
 THIS DRAWING IS THE PROPERTY OF AEROTECH, INC. AND IS SUBMITTED IN CONFIDENCE AND SHALL NOT BE REPRODUCED NOT COPIED NOR DISCLOSED TO OTHERS