

REVISIONS				
SYM.	ZONE	DESCRIPTION	DATE	APPROVAL

BA SERIES SERVO AMP

TYPICAL INTERCONNECT

NOTE: SYSTEM CONFIGURATION DETERMINES WHETHER APPLICABLE SIGNAL CONNECTS TO BA10/20 OR NOT.

P1	FLYING LEAD	WIRE	SIGNAL
1	FLYING LEAD	SHIELD	SIG SHLD
2	FLYING LEAD	RED/GRN & RED/BLK	ENC +5V
3			
4	FLYING LEAD	RED/WHT	HA
5	FLYING LEAD	WHT/RED	COS
6	FLYING LEAD	ORN/RED	COS-N
7			
8			
9			
10			
11			
12			
13			
14	FLYING LEAD	BLUE & GRN/BLK	ENC COM
15	↑	GRN	LMT COM
16		BLK/WHT	HB
17		BLU/WHT	HC
18		BLU/RED	SIN
19	↓	BLK/RED	SIN-N
20	FLYING LEAD	RED	LMT +5V

FLYING LEAD	WIRE	SIGNAL
FLYING LEAD	WHT/BLK	BRK+
↑	GRN/WHT	BRK-
	BLU/BLK	MKR
	ORN/BLK	MKR-N
	WHT	CW/+ LMT
	BLK	CCW/- LMT
FLYING LEAD	ORN	HM LMT

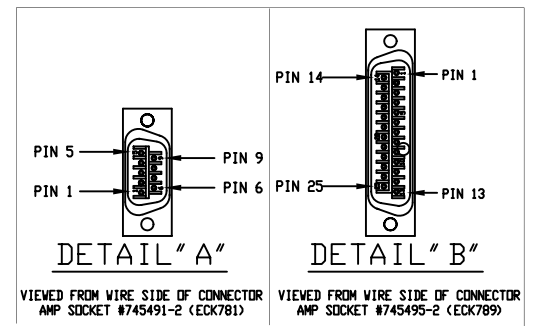
AMP SOCKET, #745495-2 (ECK789)
 AMPHENOL BACKSHELL #17-1726-2 (ECK656)

CONSOLIDATED #5736
 (20 COND. #22), ECX579 (STANDARD)

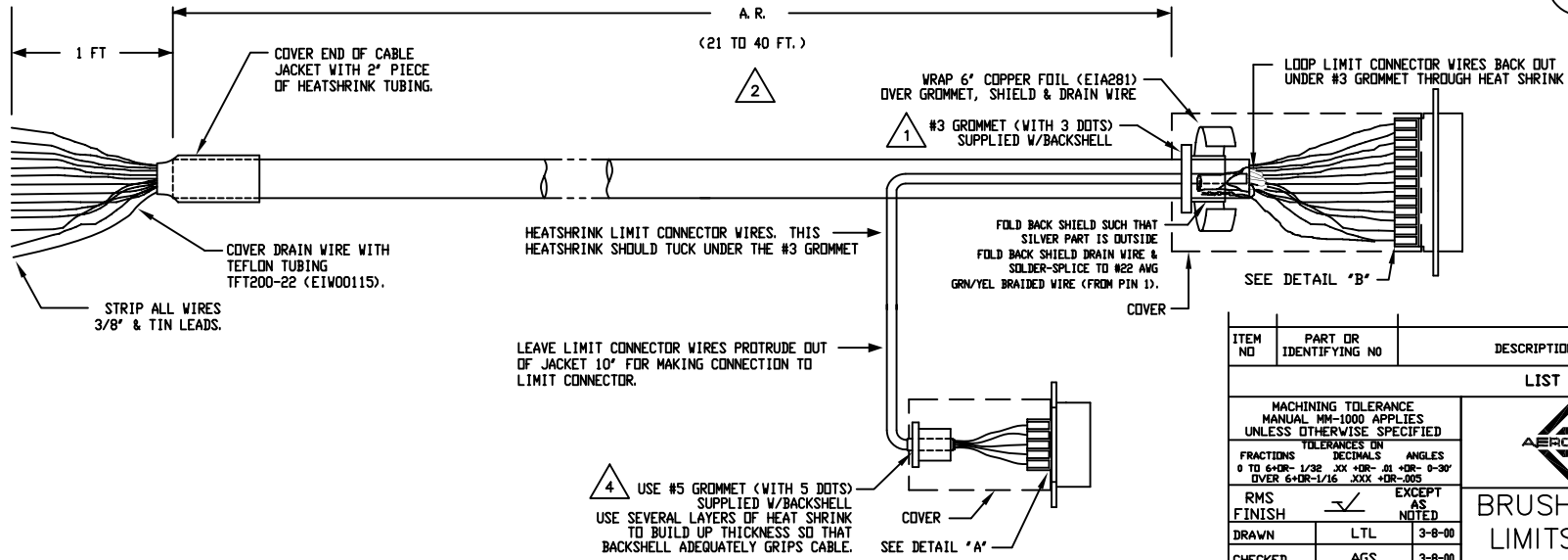
SIGNAL	WIRE	SOCKET
SIG SHLD	SHIELD	1
-	-	2
ENC +5V	RED/GRN	3(1/2)
ENC +5V	RED/BLK	3(2/2)
-	-	4
HB	BLK/WHT	5
MKR-N	ORN/BLK	6
MKR	BLU/BLK	7
-	-	8
-	-	9
HA	RED/WHT	10
HC	BLU/WHT	11
-	-	12
BRK-	GRN/WHT	13
BRK+	WHT/BLK	25
-	-	24
-	-	23
-	-	22
ENC COM	BLU	21(1/2)
ENC COM	GRN/BLK	21(2/2)
-	-	20
-	-	19
SIN-N	BLK/RED	18
SIN	BLU/RED	17
-	-	16
COS-N	ORN/RED	15
COS	WHT/RED	14

AMP SOCKET, #745491-2 (ECK781)
 AMPHENOL BACKSHELL #17-1724-2 (ECK01021)

SIGNAL	WIRE	SOCKET
LMT +5V	RED	1
LMT COM	GRN	2
CW/+ LMT	WHT	3
HM LMT	ORN	4
CCW/- LMT	BLK	5



- 4 USE #5 GROMMET WITH 5 DOTS AS SHOWN BELOW WHICH IS SUPPLIED W/BACKSHELL
- 3 FOR CRIMP TOOL USE AMP HANDLE ASSY 58074-1 WITH AMP HEAD ASSY 58063-2
- 2 STARTING CABLE LENGTH = 24 in. BEYOND SPECIFIED LENGTH OF CABLE DO NOT EXCEED LENGTH OF 40 FT FOR THIS DESIGN
- 1 USE #3 GROMMET WITH 3 DOTS AS SHOWN BELOW WHICH IS SUPPLIED W/BACKSHELL



4 USE #5 GROMMET (WITH 5 DOTS) SUPPLIED W/BACKSHELL USE SEVERAL LAYERS OF HEAT SHRINK TO BUILD UP THICKNESS SO THAT BACKSHELL ADEQUATELY GRIPS CABLE.

ITEM NO	PART OR IDENTIFYING NO	DESCRIPTION	SPEC	MATERIAL OR NOTE	QTY REQD
LIST OF MATERIAL					
MACHINING TOLERANCE MANUAL MM-1000 APPLIES UNLESS OTHERWISE SPECIFIED		AEROTECH, INC. 101 Zeta Drive Pittsburgh, PA. 15238 (412)963-7470 TWX710-795-3125			
TOLERANCES ON FRACTIONS DECIMALS ANGLES 0 TO 6+DR- 1/32 XX +DR- .01 +DR- 0-30' OVER 6+DR- 1/16 .XXX +DR-.005					
RMS FINISH	✓	EXCEPT AS NOTED	BRUSHLESS MOTOR/ENCODER/ LIMITS/HALL EFFECT CABLE PFCD-21 TO 40 (21 TO 40 FT.)		
DRAWN	LTL	3-8-00	CODE IDENT. NO.	SIZE	REV.
CHECKED	AGS	3-8-00	PFCD	C	630C1858-2
DESIGN					
ENGRG					
PRDD					
D. A.					
APPD	AGS	3-8-00	SCALE NTS	FILE NAME 630C1858-201.dwg	SHEET 1 OF 1

PROPRIETARY INFORMATION
 THIS DRAWING IS THE PROPERTY OF AEROTECH, INC.
 AND IS SUBMITTED IN CONFIDENCE AND SHALL NOT BE
 REPRODUCED NOT COPIED NOR DISCLOSED TO OTHERS