

CONSOLIDATED #5737-CL
(25 COND. #22), ECX01044

AMP SOCKET #745495-2 (ECK00789)
AMPHENDL BACKSHELL #17-1726-2 (ECK00656)

CONSOLIDATED #5737-CL
(25 COND. #22), ECX01044

REVISIONS				
SYM.	ZONE	DESCRIPTION	DATE	APPROVAL
A		ADDED ECN 6657	1-9-03	LTL

BA AMPLIFIER
SERVO AMP

TYPICAL INTERCONNECT

NOTE: SYSTEM CONFIGURATION
DETERMINES WHETHER APPLICABLE
SIGNAL CONNECTS TO BA10/20/30
OR NOT.

P1	FLYING LEAD	WIRE	SIGNAL
1	FLYING LEAD	SHIELD	SIG SHLD
2	FLYING LEAD	RED/BLK	ENC +5V (1/2)
2	FLYING LEAD	WHT/BLK/RED	ENC +5V (2/2)
3			
4	FLYING LEAD	RED/WHT	HA
5	FLYING LEAD	WHT/RED	COS
6	FLYING LEAD	ORN/RED	COS-N
7			
8			
9			
10			
11			
12			
13			
14	FLYING LEAD	GRN/BLK	ENC COM (1/2)
14	FLYING LEAD	BLU	ENC COM (2/2)
15	↑	GRN	LMT COM
16		BLK/WHT	HB
17		BLU/WHT	HC
18		BLU/RED	SIN
19		BLK/RED	SIN-N
20	FLYING LEAD	RED	LMT +5V

FLYING LEAD	WIRE	SIGNAL
FLYING LEAD	WHT/BLK	BRK+
↑	GRN/WHT	BRK-
	BLU/BLK	MKR
	ORN/BLK	MKR-N
	WHT	CW/+ LMT
	BLK	CCW/- LMT
	ORN	HM LMT
↓	RED/GRN	EXT SD
FLYING LEAD	ORN/GRN	ENCODER FAULT

UNUSED WIRES (ECX01044): RED/BLK/WHT
BLK/WHT/RED, GRN/BLK/WHT

SIGNAL	WIRE	SOCKET
SIG SHLD / FRM GND	SHIELD	1
EXT SD	RED/GRN	2
ENC +5V	RED/BLK	3(1/2)
ENC +5V	WHT/BLK/RED	3(2/2)
-	-	4
HB	BLK/WHT	5
MKR-N	ORN/BLK	6
MKR	BLU/BLK	7
-	-	8
-	-	9
HA	RED/WHT	10
HC	BLU/WHT	11
CW/+ LMT	WHT	12
BRAKE-	GRN/WHT	13

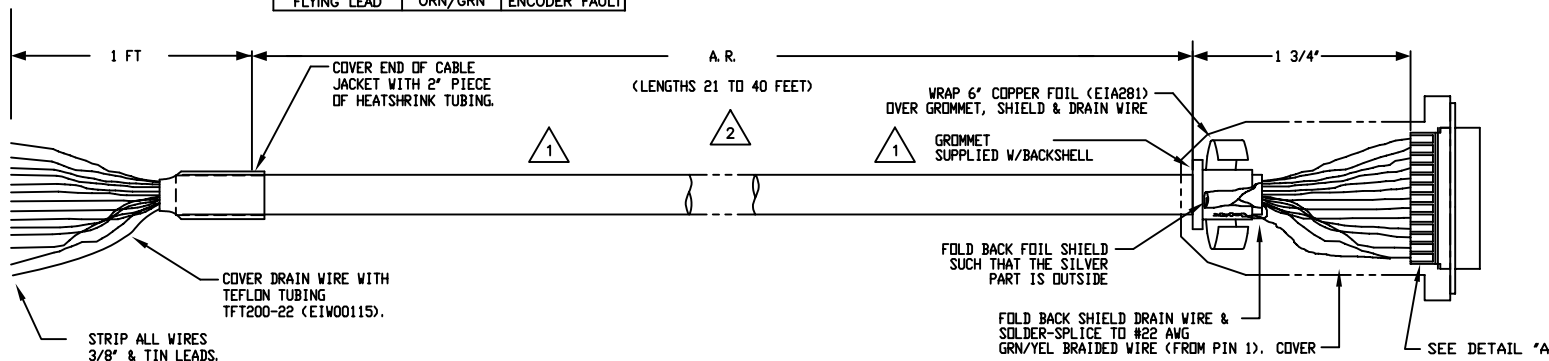
BRAKE+	WHT/BLK	25
CCW/- LMT	BLK	24
ENCODER FAULT	ORN/GRN	23
HM LMT	ORN	22
ENC COM	BLU	21(1/2)
ENC COM	GRN/BLK	21(2/2)
LMT COM	GRN	20
-	-	19
SIN-N	BLK/RED	18
SIN	BLU/RED	17
LMT +5V	RED	16
COS-N	ORN/RED	15
COS	WHT/RED	14

- 3 FOR CRIMP TOOL USE AMP HANDLE ASSY 58074-1 WITH AMP HEAD ASSY 58063-2
- 2 STARTING CABLE LENGTH = 1 FT LONGER THAN REQUIRED LENGTH.
- 1 FOR ECX1044 USE #3 GROMMET WITH 3 DOTS AS SHOWN BELOW WHICH IS SUPPLIED W/BACKSHELL



PIN 1

DETAIL "A"
AMP SOCKET #745495-2 (ECK00789)



CUSTOMER NAME: XXXXXX
ORDER NUMBER: XXXXXX
APPROVED BY: XXX
RELEASE DATE: XXXXXX CUST FILE NAME: XXXXXX 630C1865-2A1 PFCMX.DWG

PROPRIETARY INFORMATION THIS DRAWING IS THE PROPERTY OF AEROTECH, INC. AND IS SUBMITTED IN CONFIDENCE AND SHALL NOT BE REPRODUCED NOR COPIED NOR DISCLOSED TO OTHERS UNDER PENALTY OF LAW.		AEROTECH, INC. 101 Zeta Drive Pittsburgh, PA. 15238 (412)963-7470 www.aerotech.com	
TOLERANCES ON FRACTIONS DECIMALS ANGLES 0 TO 6 ± 1/32 .XX ± .01 ± 0-30' OVER 6 ± 1/16 .XXX ± .005			
RMS FINISH EXCEPT AS NOTED		PFCMX-21 to 40 BRUSHLESS FEEDBACK CABLE (LENGTHS 21 TO 40 FEET)	
DRAWN	LTL	1-9-03	PART CODE PFCMX
CHECKED	AGS	1-9-03	
APPD.	AGS	1-9-03	
SCALE FULL		FILE NAME 630C1865-2A1.DWG	SHEET 1