

REVISIONS				
REV.	ZONE	DESCRIPTION	DATE	DRAWN
A		CHANGES PER ECN5365	1/20/01	JLD
B		CHANGED CABLE SPLIT LENGTH PER ECN5386	1/30/01	JLD
C		ADDED ECN5453	3/8/01	JRF
D		ADDED ECN5517	4/5/01	JRF
E		ADDED ECN6181 (CABLE LENGTHS ARE 1 TO 35 FT.)	4/02	JAB
F		ADDED ECN6944	05/03	JRF

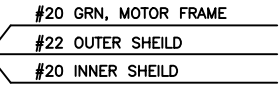
PIN	WIRE	SIGNAL
13	-	-
12	#24 WHT	CW/+ LMT
11	#24 BLU	HALL C
10	#24 YEL	HALL A
9	-	-
8	-	-
7	#24 BRN	MKR
6	#24 BLK	MKR-N
5	#24 ORN	HALL B
4	-	-
3	#22 WHT/BRN	ENC +5V
2	-	ENABLE
1	OUTER SHIELD	SIG SHLD / FRM GND

PIN	WIRE	SIGNAL
14	-	-
13	-	-
12	-	-
11	-	-
10	-	-
9	-	-
8	INNER SHIELD	MTR SHLD
7	-	-
6	-	-
5(1/2)	#20 WHT	MTR Ø C
5(2/2)	#20 BRN	MTR Ø C
4(1/2)	#20 RED	MTR Ø B
4(2/2)	#20 ORN	MTR Ø B
3(1/2)	#20 BLU	MTR Ø A
3(2/2)	#20 YEL	MTR Ø A
2	-	-
1	#20 GRN	FRM GND

SIGNAL	WIRE	PIN
MTR Ø C	#20 WHT *	13
MTR Ø B	#20 RED *	12
MTR Ø A	#20 BLU *	11
FRAME & SHIELDS	#22 GRN	10
HALL C	#24 BLU	9
HALL A	#24 YEL	8
CCW/- LMT	#24 GRY	7
LMT COM	#22 WHT/GRN	6
ENC COM	#22 WHT/YEL	5
MKR-N	#24 BLK	4
SIN-N	#24 RED	3
COS-N	#24 VIO	2
NO CONNECTION	INSERT KEY	1

* INDICATES WIRES FROM INNER BUNDLE

UNUSED WIRES:
#24 WHT/RED
#24 WHT/VIO



SPLICE (2) PIECES OF #22 GREEN TO INNER, OUTER SHIELDS, & MOTOR FRAME THEN TERMINATE TO IDC CONN.

- 5
- 4
- 3
- 2
- 1

FOR CRIMP TOOL USE AMP HANDLE ASSY 58074-1 WITH AMP HEAD ASSY 58063-2

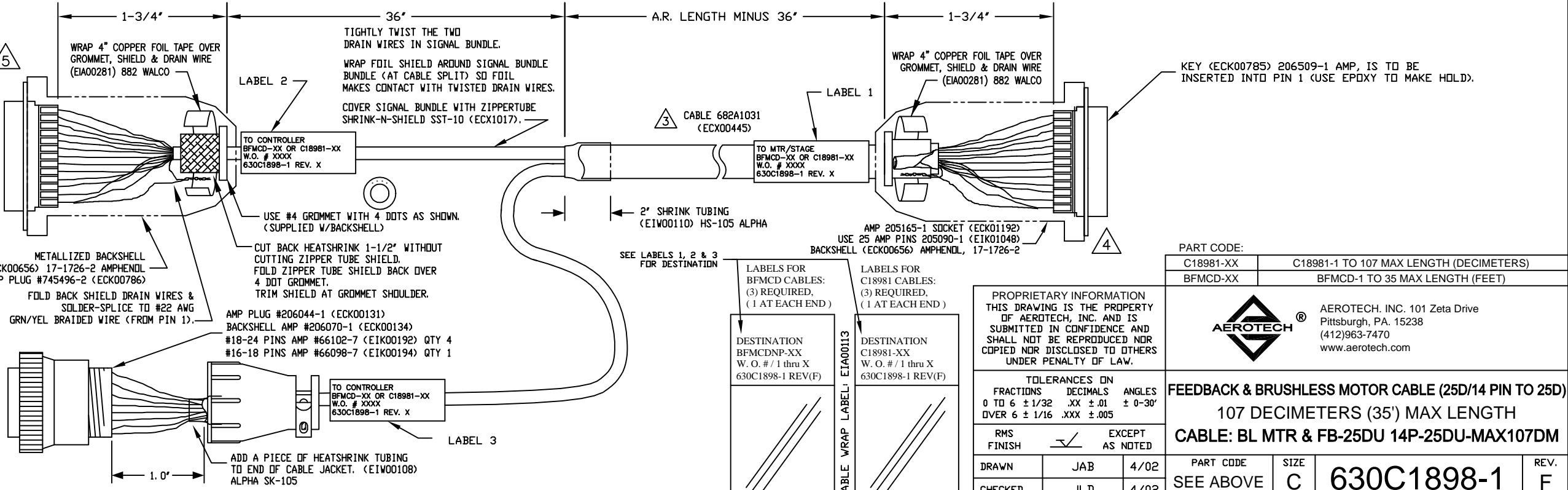
FOR CRIMP TOOL USE DMC HANDLE ASSY M22520/2-01 WITH DMC HEAD ASSY K1S

IF THIS IS TO BE MADE BY EXTERNAL VENDOR SEND DRAWING 682A1031 WITH THIS DRAWING.

USE 2" LENGTHS OF THICK WALL HEATSHRINK TUBING TO BUILD UP CABLE DIAMETER FOR PROPER STRAIN RELIEFING. STRAIN RELIEFING MUST WITHSTAND 35 LB. PULL.

CUT THICK WALL HEATSHRINK TUBING WITH CABLE CUTTER SUCH THAT ENDS ARE PERPENDICULAR TO CABLE AND CUT IS SMOOTH. THICK WALL HEATSHRINK TUBING:
AMP # 53701-1 (EIW00112) MAX INSIDE DIA = .750" (EXPANDED), MIN INSIDE DIA = .220" (RECOVERED)
AMP # 53700-1 (EIW00113) MAX INSIDE DIA = .400" (EXPANDED), MIN INSIDE DIA = .150" (RECOVERED)

STARTING CABLE LENGTH SHOULD BE 5 IN LONGER THAN TOTAL LENGTH OF CABLE. LENGTH OF CABLE IS DESIGNATED BY THE (XX) IN CABLE NAME.



PART CODE:	
C18981-XX	C18981-1 TO 107 MAX LENGTH (DECIMETERS)
BFMCD-XX	BFMCD-1 TO 35 MAX LENGTH (FEET)
AEROTECH, INC. 101 Zeta Drive Pittsburgh, PA. 15238 (412)963-7470 www.aerotech.com	
FEEDBACK & BRUSHLESS MOTOR CABLE (25D/14 PIN TO 25D) 107 DECIMETERS (35') MAX LENGTH CABLE: BL MTR & FB-25DU 14P-25DU-MAX107DM	
PART CODE	SIZE
SEE ABOVE	C
630C1898-1	
REV.	F
SCALE NTS	FILE NAME 630C1898-1F1.dwg
SHEET	1 OF 1