

REVISIONS			
REV.	DESCRIPTION	DATE	DRAWN
A	ECN7334	8/29/03	JAB
B	ECN7837	4/6/04	JAB
C	ECN8984	10/21/05	JAB
D	ADDED ECN11281	07/08	JRF
E	ADDED ECN12382	12/09	JRF
F	ADDED ECN13212	03/11	JRF
G	ADDED ECN13566	9/6/11	EJB
H	ADDED ECN15003	8/12/13	AMD

PIN	WIRE	SIGNAL
13	-	-
12	#24 WHT	CW/+ LMT
11	#24 BLU	HALL C
10	#24 YEL	HALL A
9	-	-
8	-	-
7	#24 BRN	MKR
6	#24 BLK	MKR-N
5	#24 ORN	HALL B
4	#24 PNK	STAGE ID
3	#22 WHT/BRN	ENC +5V
2	#24 WHT/RED	THERM
1	OUTER SHIELD	SIG SHLD / FRM GND
14	#24 WHT/BLK	COS
15	#24 VIO	COS-N
16	#22 WHT/BLU	LMT +5V
17	#24 GRN	SIN
18	#24 RED	SIN-N
19	-	-
20	#22 WHT/GRN	LMT COM
21	#22 WHT/YEL	ENC COM
22	-	-
23	-	-
24	#24 GRY	CCW/- LMT
25	-	-

SIGNAL	WIRE	PIN
MTR Ø C	#20 WHT *	13
MTR Ø B	#20 RED *	12
MTR Ø A	#20 BLU *	11
FRAME & SHIELDS	#22 GRN	10
HALL C	#24 BLU	9
HALL A	#24 YEL	8
CCW/- LMT	#24 GRY	7
LMT COM	#22 WHT/GRN	6
ENC COM	#22 WHT/YEL	5
MKR-N	#24 BLK	4
SIN-N	#24 RED	3
COS-N	#24 VIO	2
NO CONNECTION	INSERT KEY	1
COS	#24 WHT/BLK	14
SIN	#24 GRN	15
MKR	#24 BRN	16
ENC +5V	#22 WHT/BRN	17
STAGE ID	#24 PNK	18
CW/+ LMT	#24 WHT	19
THERM	#24 WHT/RED	20
HALL B	#24 ORN	21
FRAME & SHIELDS	#22 GRN	22
MTR Ø A	#20 YEL *	23
MTR Ø B	#20 ORN *	24
MTR Ø C	#20 BRN *	25

UNUSED WIRES:  
#24 WHT/VIO

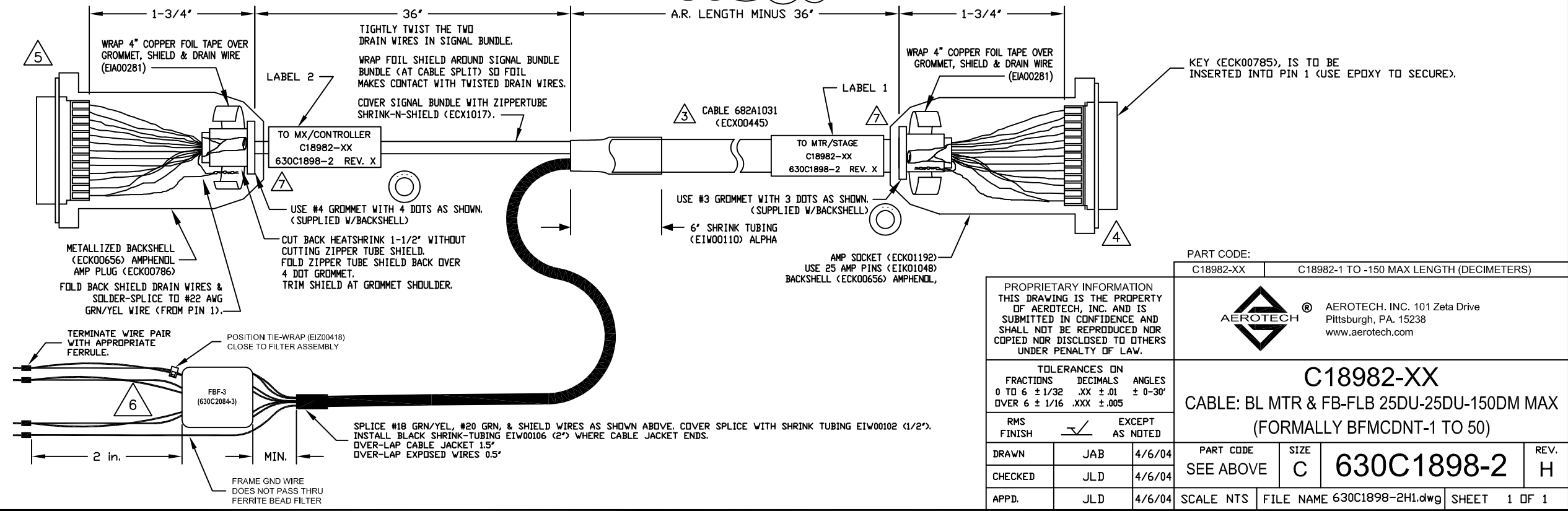
25 PIN PLUG

FLYING LEADS

FERRULE	FBF-3	WIRE	SIGNAL
EK01098	(X10) E201027	#20 WHT #20 BRN	MTR Ø C MTR Ø C
EK01098	(X10) E201027	#20 RED #20 ORN	MTR Ø B MTR Ø B
EK01098	(X10) E201027	#20 BLU #20 YEL	MTR Ø A MTR Ø A
EK01072		#18 GRN/YEL #20 GRN INNER SHIELD	FRM GND MTR SHLD

CABLE NAME AND LENGTH IN DECIMETERS (XX)  
DRAWING NUMBER  
CABLE DESCRIPTION  
PART #: EIA00113  
TEXT STYLE: PRESTIEG PICA 10pt  
CURRENT REVISION LEVEL (x)  
TYP. 2 PLS

- 8 FOR -50 CABLE USE C22891-50 AS THE BASE. ADD FLYING LEAD MOTOR CONNECTION AND FERRITE FILTER AT CONTROLLER END. RE-LABEL CABLE PER THIS DRAWING.
- 7 VERIFY GROMMET IS SECURED TIGHTLY AROUND CABLE. IF NECESSARY BUILD UP WITH SHRINK TUBING.
- 6 APPLY LABEL SLEEVES TO WIRES IDENTIFYING THE MOTOR "A", "B", "C", & "G" USE LABEL SLEEVE EIA01161.
- 5 FOR CRIMP TOOL USE AMP HANDLE ASSY 58074-1 WITH AMP HEAD ASSY 58063-2
- 4 FOR CRIMP TOOL USE DMC HANDLE ASSY M22520/2-01 WITH DMC HEAD ASSY K1S
- 3 IF THIS IS TO BE MADE BY EXTERNAL VENDER SEND DRAWINGS 682A1031 AND 630C2084-1 WITH THIS DRAWING.
- 2 NOT APPLICABLE TO THIS DRAWING
- 1 STARTING CABLE LENGTH SHOULD BE 5 IN LONGER THAN TOTAL LENGTH OF CABLE. LENGTH OF CABLE IS DESIGNATED BY THE (XX) IN CABLE NAME.



PROPRIETARY INFORMATION  
THIS DRAWING IS THE PROPERTY OF AEROTECH, INC. AND IS SUBMITTED IN CONFIDENCE AND SHALL NOT BE REPRODUCED NOR COPIED NOR DISCLOSED TO OTHERS UNDER PENALTY OF LAW.

PART CODE:  
C18982-XX C18982-1 TO -150 MAX LENGTH (DECIMETERS)

AEROTECH  
AEROTECH, INC. 101 Zeta Drive  
Pittsburgh, PA. 15238  
www.aerotech.com

TOLERANCES ON  
FRACTIONS DECIMALS ANGLES  
0 TO 6 ± 1/32 .XX ± .01 ± 0-30'  
OVER 6 ± 1/16 .XXX ± .005

RMS FINISH	EXCEPT AS NOTED
DRAWN	JAB 4/6/04
CHECKED	JLD 4/6/04
APPD.	JLD 4/6/04

**C18982-XX**  
CABLE: BL MTR & FB-FLB 25DU-25DU-150DM MAX  
(FORMALLY BFMCDNT-1 TO 50)

PART CODE	SIZE	REV.
SEE ABOVE	C	H

SCALE NTS FILE NAME 630C1898-2H1.dwg SHEET 1 OF 1