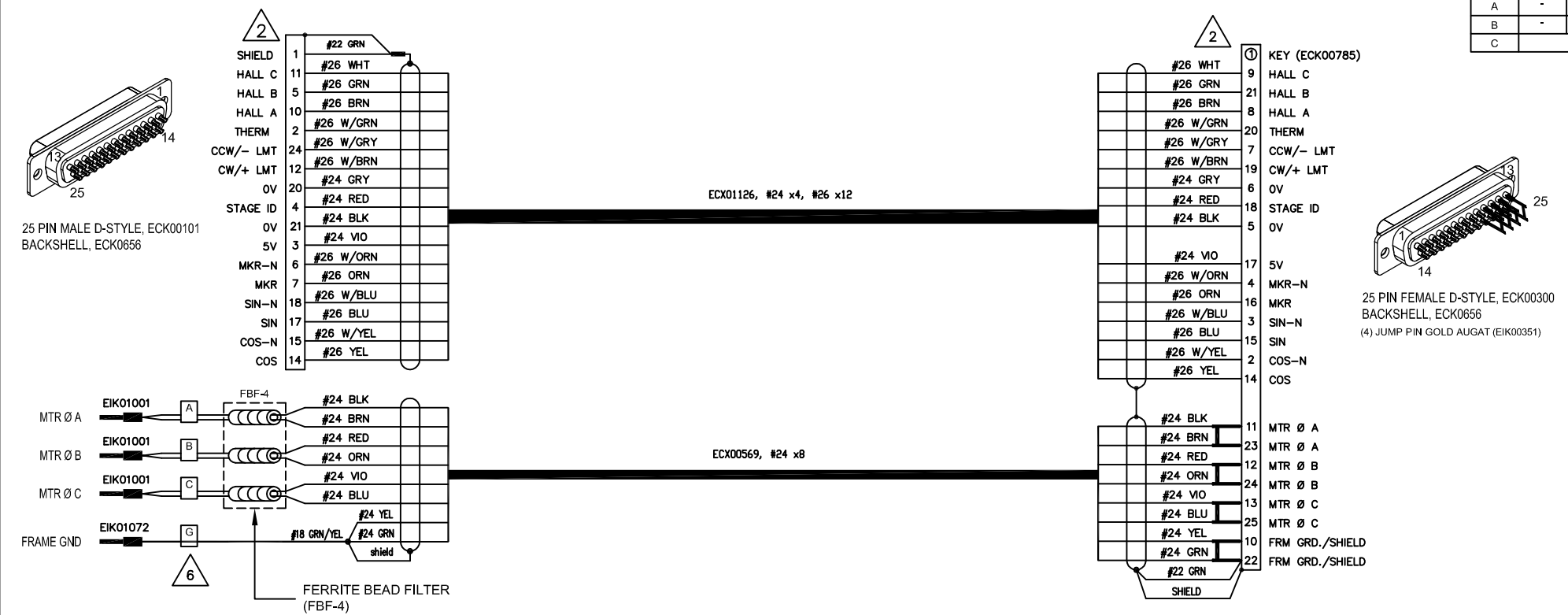
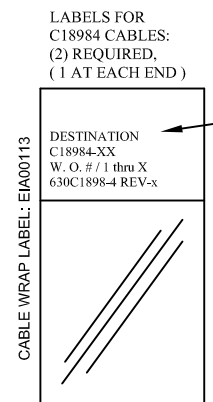
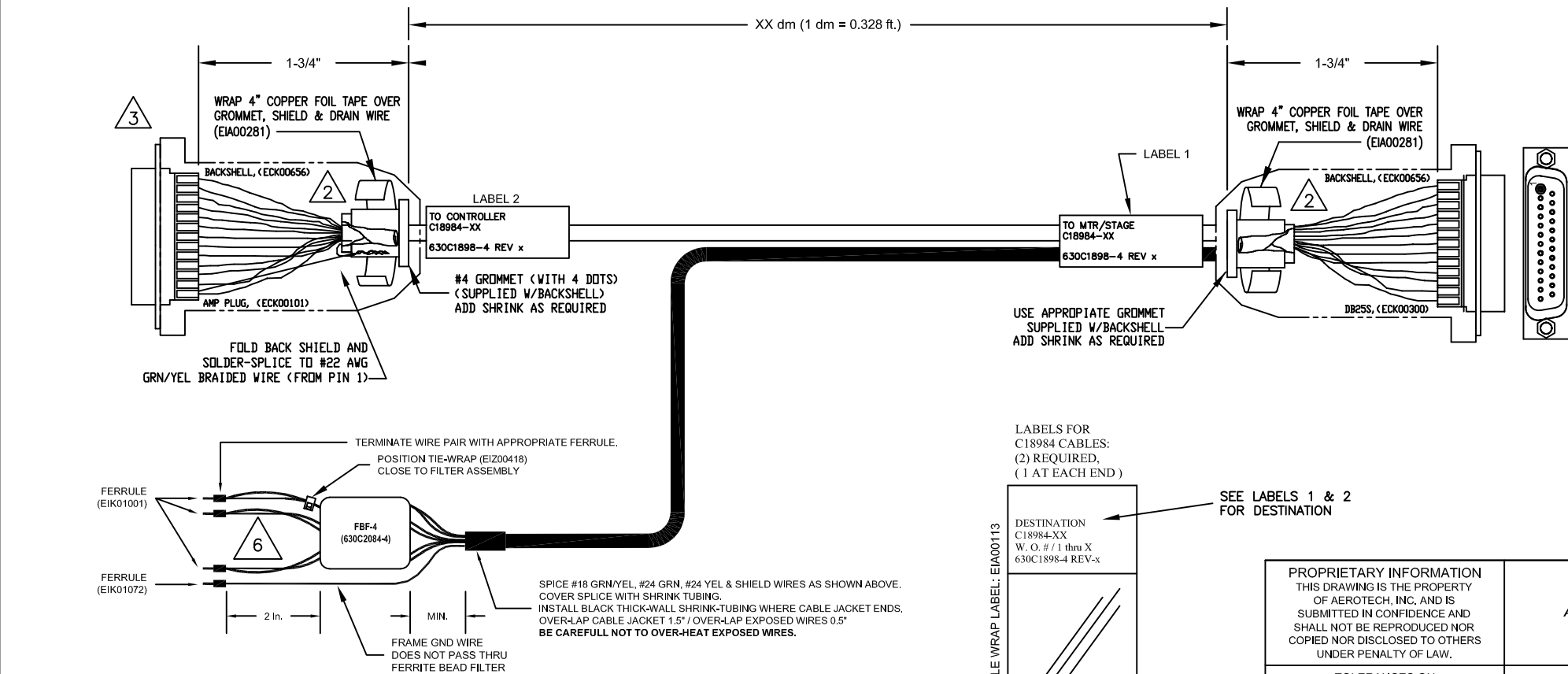


REVISIONS				
REV.	ZONE	DESCRIPTION	DATE	DRAWN
A	-	ECN13570	9/7/11	EJB
B	-	ECN14839	6-04-13	AGS
C	-	ADDED ECN 16033	8/29/14	JFM



- 6 APPLY LABELS TO WIRES IDENTIFYING THE MOTOR "A", "B", "C", & GROUND LEADS. USE LABEL SLEEVE EIA01161.
- 2 APPLY SHRINK TUBING TO ALL WIRE/SOLDER-CUP JOINTS. CARE MUST BE TAKEN NOT TO OVER-HEAT THE WIRES DURING SOLDERING AND THE APPLICATION OF THE SHRINK TUBING. SHRINK TUBING IS TO INSULATE ADJACENT CONTACTS AND PROVIDE STRAIN RELIEF FOR THE INDIVIDUAL WIRES.
- 1 STARTING CABLE LENGTH SHOULD BE 6 IN LONGER THAN TOTAL LENGTH OF CABLE.



SEE LABELS 1 & 2 FOR DESTINATION

PROPRIETARY INFORMATION  
THIS DRAWING IS THE PROPERTY OF AEROTECH, INC. AND IS SUBMITTED IN CONFIDENCE AND SHALL NOT BE REPRODUCED NOR COPIED NOR DISCLOSED TO OTHERS UNDER PENALTY OF LAW.

**AEROTECH** © AEROTECH, INC. 101 Zeta Drive  
Pittsburgh, PA. 15238  
(412)963-7470 / www.aerotech.com

TOLERANCES ON		
FRACTIONS	DECIMALS	ANGLES
0 TO 6 #/32	.XX ±01	± 0-30'
OVER 6 #1/16	.XXX ±005	

**C18984-XX**  
HIGH-FLEX FEEDBACK & BRUSHLESS MOTOR CABLE  
CABLE: BL MTR & FB-FLB 25DU-25DU-HF NO EXPANDO -50DM MAX

RMS FINISH	EXCEPT AS NOTED	PART CODE	SIZE	REV.
DRAWN	10/28/05	JAB	C	C
CHECKED	10/28/05	AGS	630C1898-4	
APPD.	10/28/05	AGS	SCALE	NTS