

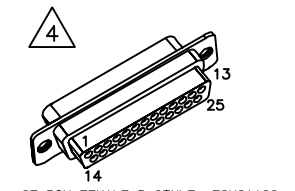
REVISIONS			
REV.	DESCRIPTION	DATE	DRAWN

PIN	WIRE	SIGNAL
13	-	-
12	#24 WHT	CW/+ LMT
11	#24 BLU	HALL C
10	#24 YEL	HALL A
9	-	-
8	-	-
7	#24 BRN	MKR
6	#24 BLK	MKR-N
5	#24 ORN	HALL B
4	#24 PNK	STAGE ID
3	#22 WHT/BRN	ENC +5V
2	#24 WHT/RED	THERM
1	#22 GRN/WHT	SIGNAL SHIELD
14	#24 WHT/BLK	COS
15	#24 VIO	COS-N
16	#22 WHT/BLU	LMT +5V
17	#24 GRN	SIN
18	#24 RED	SIN-N
19	-	-
20	#22 WHT/GRN	LMT COM
21	#22 WHT/YEL	ENC COM
22	-	-
23	-	-
24	#24 GRY	CCW/- LMT
25	-	-

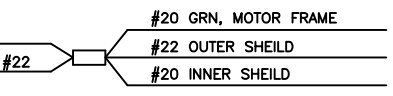
SIGNAL	WIRE	PIN
MTR ØC	#20 WHT *	13
MTR ØB	#20 RED *	12
MTR ØA	#20 BLU *	11
FRAME	#22 GRN	10
HALL C	#24 BLU	9
HALL A	#24 YEL	8
CCW/- LMT	#24 GRY	7
LMT COM	#22 WHT/GRN	6
ENC COM	#22 WHT/YEL	5
MKR-N	#24 BLK	4
SIN-N	#24 RED	3
COS-N	#24 VIO	2
-	-	1
SHIELDS	SHIELDS	Case
COS	#24 WHT/BLK	14
SIN	#24 GRN	15
MKR	#24 BRN	16
ENC +5V	#22 WHT/BRN	17
STAGE ID	#24 PNK	18
CW/+ LMT	#24 WHT	19
THERM	#24 WHT/RED	20
HALL B	#24 ORN	21
FRAME	#22 GRN *	22
MTR ØA	#20 YEL *	23
MTR ØB	#20 ORN *	24
MTR ØC	#20 BRN *	25

3  
ECX00445

UNUSED WIRES:  
#24 WHT/VIO



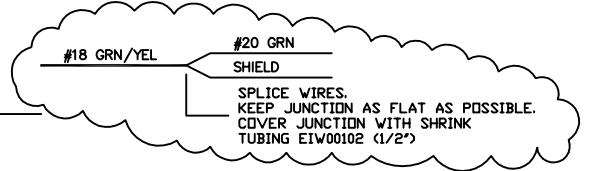
25 PIN FEMALE D-STYLE, ECK01192  
PINS, Qty. 25, EIK01048  
BACKSHELL, ECK00656



#20 GRN, MOTOR FRAME  
#22 OUTER SHIELD  
#20 INNER SHIELD

SPLICE (2) PIECES OF #22 GREEN TO INNER, OUTER SHIELDS, & MOTOR FRAME THEN TERMINATE TO IDC CONN.

FERRULE	FBF-3	WIRE	SIGNAL
EK01098	(x10) E201027	#20 WHT #20 BRN	MTR ØC
EK01098	(x10) E201027	#20 RED #20 ORN	MTR ØB
EK01098	(x10) E201027	#20 BLU #20 YEL	MTR ØA
EK01098	-	#18 GRN/YEL #20 GRN INNER SHIELD	FRM GND MTR SHLD



SPLICE WIRES. KEEP JUNCTION AS FLAT AS POSSIBLE. COVER JUNCTION WITH SHRINK TUBING EIW00102 (1/2")

7

VERIFY GROMMET IS SECURED TIGHTLY AROUND CABLE. IF NECESSARY BUILD UP WITH SHRINK TUBING.

6

APPLY EIA01161 LABEL SLEEVES TO MOTOR WIRES 'A', 'B', 'C', & 'G'

5

FOR CRIMP TOOL USE AMP HANDLE ASSY 58074-1 WITH AMP HEAD ASSY 58063-2

4

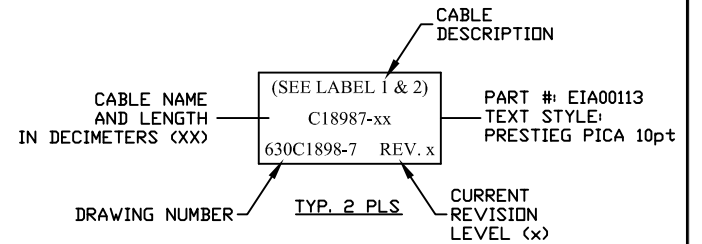
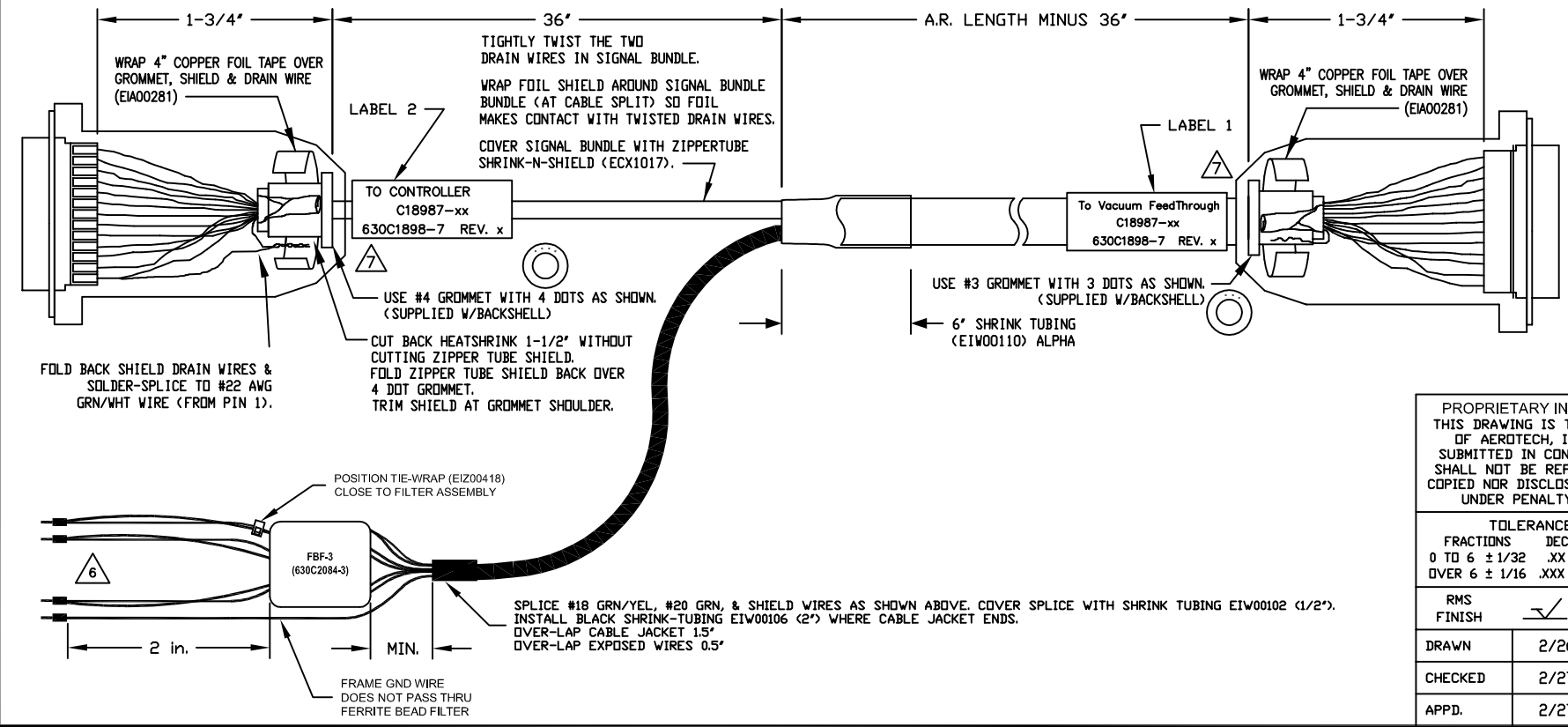
FOR CRIMP TOOL USE DMC HANDLE ASSY M22520/2-01 WITH DMC HEAD ASSY K1S

3

IF THIS IS TO BE MADE BY EXTERNAL VENDOR SEND DRAWINGS 682A1031 AND 630C2084-3 WITH THIS DRAWING.

1

STARTING CABLE LENGTH SHOULD BE 5 IN LONGER THAN TOTAL LENGTH OF CABLE. LENGTH OF CABLE IS DESIGNATED BY THE (XX) IN CABLE NAME.



PROPRIETARY INFORMATION  
THIS DRAWING IS THE PROPERTY OF AEROTECH, INC. AND IS SUBMITTED IN CONFIDENCE AND SHALL NOT BE REPRODUCED NOR COPIED NOR DISCLOSED TO OTHERS UNDER PENALTY OF LAW.

**AEROTECH**®  
AEROTECH, INC. 101 Zeta Drive  
Pittsburgh, PA. 15238  
www.aerotech.com

TOLERANCES ON	FRACTIONS	DECIMALS	ANGLES
0 TO 6 ± 1/32	.XX ± .01	± 0-30'	
OVER 6 ± 1/16	.XXX ± .005		

RMS FINISH	EXCEPT AS NOTED
2/26/15	JFM
2/27/15	JK
2/27/15	JFM

**Ndrive To BL Motor**  
Cable for Vacuum Chamber FeedThrough use

BL MTR & FB-FLB 25DU-25DU-10ARMS-NOKEY-MAX115DM

PART CODE	SIZE	REV.
C18987-xx	C	-

**630C1898-7**

SCALE NTS | FILE NAME 630C1898-701.dwg | SHEET 1 OF 1