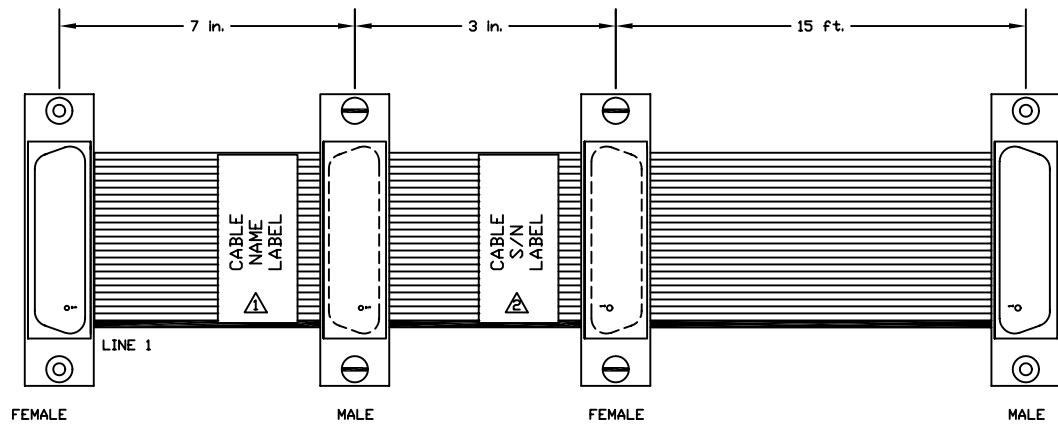


REVISIONS				
SYN.	ZONE	DESCRIPTION	DATE	APPROVAL
-	-	-	-	-



ASSEMBLY NOTES:

CRIMP
25 PIN *D* STYLE
CONNECTOR DNTD
RIBBON CABLE
USE 3M PRESS #3640

**** NOTE ****
OBSERVE PIN 1
ORIENTATION

TEST CABLE IN CABLE TESTER
BEFORE CUTTING CONNECTED LINES.

⚠ CUT 1/4" SECTION FROM LINE NUMBERS 2, 4, 8 & 10.
COVER CUT OUT SECTION WITH PART NUMBER LABEL.

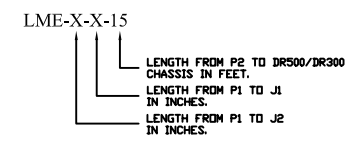
⚠ CUT 1/4" SECTION FROM LINE NUMBERS 5,6,7,11,13,14,16,17.
COVER CUT OUT SECTION WITH SERIAL NUMBER LABEL.

TEST CABLE TO VERIFY PIN #'S 14, 15, 17 & 18.
ARE ISOLATED BETWEEN CONNECTORS P1 & J1.

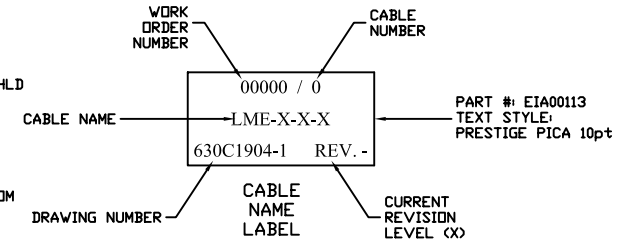
TEST CABLE TO VERIFY PIN #'S 3,16,4,6,7,20,21,49
ARE ISOLATED BETWEEN CONNECTORS P1 & J2.

⚠ CUT 1/4" SECTION FROM LINE NUMBERS 2,3,4,8,10,22,23.
TEST CABLE TO VERIFY PIN #'S 14,2,15,17,18,24,412
ARE ISOLATED BETWEEN CONNECTORS J2 & P2.

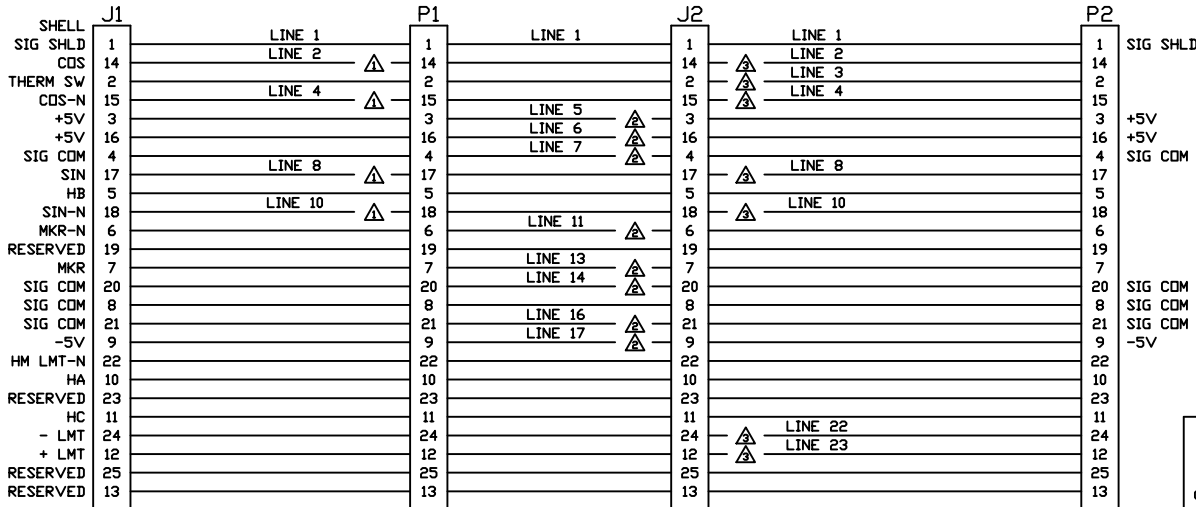
CABLE NAME KEY



CABLE LABEL TEXT



(ECX1014)
CABLE: 25 RIBBON, BLUE TEFLON, 3601-25 3M



DB-25S (ECK308) SCREWLOCK (ECK582)	DB-25P (ECK1220) SCREWLOCK (ECK582)	DB-25S (ECK308) SCREWLOCK (ECK582)	DB-25P (ECK1220) SCREWLOCK (ECK582)
LINEAR ENCODER STAGE FEEDBACK	MXH J1	LZR4300 P2	DR500 FEEDBACK AXIS-2

PROPRIETARY INFORMATION
THIS DRAWING IS THE PROPERTY
OF AEROTECH, INC. AND IS
SUBMITTED IN CONFIDENCE AND
SHALL NOT BE REPRODUCED NOR
COPIED NOR DISCLOSED TO OTHERS
UNDER PENALTY OF LAW.

AEROTECH © AEROTECH, INC. 101 Zeta Drive
Pittsburgh, PA. 15238
(412)963-7470 TWX710-795-3125

TOLERANCES ON
FRACTIONS DECIMALS ANGLES
0 TO 6 ± 1/32 .XX ± .01 ± 0-30°
OVER 6 ± 1/16 .XXX ± .005

LME-X-X CABLE,
LZR4300 & LINEAR
ENCODER TO MXH TO DR CHASSIS

RMS FINISH	EXCEPT AS NOTED	PART CODE	SIZE	REV.
DRAWN	JAB	7/25/02	LME-X-X-15 C	630C1904-1
CHECKED	JLD	7/25/02	SCALE N/A	FILE NAME 630C1904-101.DWG SHEET 1 of 1
APPD.	JLD	7/25/02		