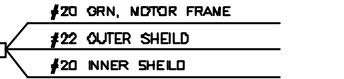


REVISIONS				
REV.	ZONE	DESCRIPTION	DATE	DRAWN

PIN	WIRE	SIGNAL
13	-	-
12	#24 WHT	CW/+ LMT
11	#24 BLU	HALL C
10	#24 YEL	HALL A
9	-	-
8	-	-
7	#24 BRN	NKR
6	#24 BLK	MKR-N
5	#24 DRN	HALL B
4	-	-
3	#22 WHT/BRN	END +5V
2	-	ENABLE
1	OUTER SHIELD	SIG SHLD / FRM GND
14	#24 WHT/BLK	CDS
15	#24 VIO	COS-N
16	#22 WHT/BLU	LMT +5V
17	#24 GRN	SIN
18	#24 RED	SIN-N
19	-	-
20	#22 WHT/GRN	LMT COM
21	#22 WHT/YEL	ENC COM
22	#24 PNK	HM LMT
23	-	-
24	#24 GRY	CCW/- LMT
25	-	-

SIGNAL	WIRE	PIN
MTR Ø C	#20 WHT *	13
MTR Ø B	#20 RED *	12
MTR Ø A	#20 BLU *	11
FRAME & SHIELDS	#22 GRN	10
HALL C	#24 BLU	9
HALL A	#24 YEL	8
CCW/- LMT	#24 GRY	7
LMT COM	#22 WHT/GRN	6
ENC COM	#22 WHT/YEL	5
NKR-N	#24 BLK	4
SIN-N	#24 RED	3
COS-N	#24 VIO	2
NO CONNECTION	INSERT KEY	1
CDS	#24 WHT/BLK	14
SIN	#24 GRN	15
MKR	#24 BRN	16
ENC +5V	#22 WHT/BRN	17
LMT +5V	#22 WHT/BLU	18
CW/+ LMT	#24 WHT	19
HM LMT	#24 PNK	20
HALL B	#24 DRN	21
FRAME & SHIELDS	#22 GRN	22
MTR Ø A	#20 YEL *	23
MTR Ø B	#20 DRN *	24
MTR Ø C	#20 BRN *	25

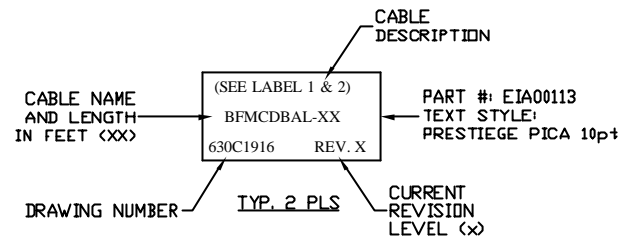
UNUSED WIRES:
#24 WHT/RED
#24 WHT/VIO



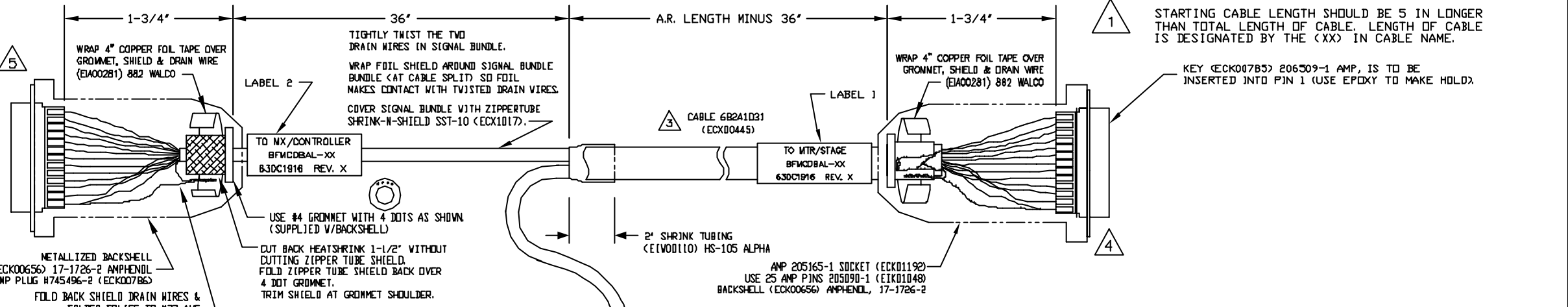
SPLICE (2) PIECES OF #22 GREEN TO INNER, OUTER SHIELDS, & MOTOR FRAME THEN TERMINATE TO IDC CONN.

- 5 FOR CRIMP TOOL USE AMP HANDLE ASSY 58074-1 WITH AMP HEAD ASSY 58063-2
- 4 FOR CRIMP TOOL USE JMC HANDLE ASSY M22520/2-01 WITH JMC HEAD ASSY K15
- 3 IF THIS IS TO BE MADE BY EXTERNAL VENDOR SEND DRAWING 682A1D31 WITH THIS DRAWING.
- 2 USE 2" LENGTHS OF THICK WALL HEATSHRINK TUBING TO BUILD UP CABLE DIAMETER FOR PROPER STRAIN RELIEFING. STRAIN RELIEFING MUST WITHSTAND 35 LB. PULL.

CUT THICK WALL HEATSHRINK TUBING WITH CABLE CUTTER SUCH THAT ENDS ARE PERPENDICULAR TO CABLE AND CUT IS SMOOTH. THICK WALL HEATSHRINK TUBING:
AMP # 53701-1 (E1V00112) MAX INSIDE DIA = .750" (EXPANDED), MIN INSIDE DIA = .220" (RECOVERED)
AMP # 53700-1 (E1V00113) MAX INSIDE DIA = .400" (EXPANDED), MIN INSIDE DIA = .150" (RECOVERED)



PIN	WIRE	SIGNAL
5(1/2)	#20 WHT	MTR Ø C
6(2/2)	#20 BRN	MTR Ø C
4(1/2)	#20 RED	MTR Ø B
4(2/2)	#20 DRN	MTR Ø B
3(1/2)	#20 BLU	MTR Ø A
3(2/2)	#20 YEL	MTR Ø A
1(1/2)	#22 G/YEL	MTR SHLD
1(2/2)	#20 GRN	FRM GND



PROPRIETARY INFORMATION THIS DRAWING IS THE PROPERTY OF AEROTECH, INC. AND IS SUBMITTED IN CONFIDENCE AND SHALL NOT BE REPRODUCED NOR COPIED NOR DISCLOSED TO OTHERS UNDER PENALTY OF LAW.		AEROTECH, INC. 101 Zeta Drive Pittsburgh, PA. 15238 (412)963-7470 TWX710-795-3125	
TOLERANCES ON FRACTIONS DECIMALS ANGLES D TO 6 ± 1/32 XX ± .01 ± 0-30° OVER 6 ± 1/16 XXX ± .005		BFMCD BAL-1 TO -20 (1 TO 20 FT) FEEDBACK & BRUSHLESS MOTOR CABLE (25D / 5 PIN PHOENIX TO 25D)	
RMS FINISH	EXCEPT AS NOTED	PART CODE	REV. -
DRAWN	SCD 5/7/01	SIZE	C
CHECKED	AGS 5/7/01	630C1916	
APPD.	AGS 5/7/01	SCALE NTS	FILE NAME 630C191601.DWG
		SHEET	1 OF 1