

REVISIONS				
REV.	ZONE	DESCRIPTION	DATE	DRAWN
A		ADDED ECN5609	05/01	JRF
B		ADDED ECN6180 (CABLE LENGTHS ARE 1 TO 35 FT)	4/02	JAB
C		ECN8231	10/19/04	JAB

PIN	WIRE	SIGNAL
13	-	-
12	#24 WHT	CW/+ LMT
11	#24 BLU	HALL C
10	#24 YEL	HALL A
9	-	-
8	-	-
7	#24 BRN	MKR
6	#24 BLK	MKR-N
5	#24 ORN	HALL B
4	-	-
3	#22 WHT/BRN	ENC +5V
2	-	ENABLE
1	OUTER SHIELD	SIG SHLD / FRM GND
14	#24 WHT/BLK	COS
15	#24 VIO	COS-N
16	#22 WHT/BLU	LMT +5V
17	#24 GRN	SIN
18	#24 RED	SIN-N
19	-	-
20	#22 WHT/GRN	LMT COM
21	#22 WHT/YEL	ENC COM
22	#24 PNK	HM LMT
23	-	-
24	#24 GRY	CCW/- LMT
25	-	-

SIGNAL	WIRE	PIN
MTR Ø C	#20 WHT *	13
MTR Ø B	#20 RED *	12
MTR Ø A	#20 BLU *	11
FRAME & SHIELDS	#22 GRN	10
HALL C	#24 BLU	9
HALL A	#24 YEL	8
CCW/- LMT	#24 GRY	7
LMT COM	#22 WHT/GRN	6
ENC COM	#22 WHT/YEL	5
MKR-N	#24 BLK	4
SIN-N	#24 RED	3
COS-N	#24 VIO	2
NO CONNECTION	INSERT KEY	1
COS	#24 WHT/BLK	14
SIN	#24 GRN	15
MKR	#24 BRN	16
ENC +5V	#22 WHT/BRN	17
LMT +5V	#22 WHT/BLU	18
CW/+ LMT	#24 WHT	19
HM LMT	#24 PNK	20
HALL B	#24 ORN	21
FRAME & SHIELDS	#22 GRN	22
MTR Ø A	#20 YEL *	23
MTR Ø B	#20 ORN *	24
MTR Ø C	#20 BRN *	25

UNUSED WIRES:  
#24 WHT/RED  
#24 WHT/VIO

INNER BUNDLE  
OF 682A1031

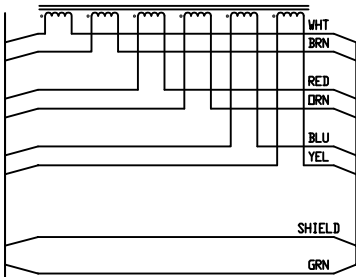
\* INDICATES WIRES FROM INNER BUNDLE

25 PIN PLUG  
WIRE JUMPER PINS 2 & 20

FLYING LEADS

#8 TERMINAL RING

WIRE	SIGNAL
(1/2) #20 WHT	MTR Ø C
(2/2) #20 BRN	MTR Ø C
(1/2) #20 RED	MTR Ø B
(2/2) #20 ORN	MTR Ø B
(1/2) #20 BLU	MTR Ø A
(2/2) #20 YEL	MTR Ø A
(1/2) SHIELD	MTR SHLD
(2/2) #20 GRN	FRM GND



CABLE NAME AND LENGTH  
IN decimeters (XX)

(SEE LABEL 1 & 2)  
C19171-XX  
630C1917 REV. X

DRAWING NUMBER

TYP. 2 PLS

\*X\* = CURRENT REVISION LEVEL

25 PIN SOCKET

CABLE DESCRIPTION

PART #: EIA00113  
TEXT STYLE: PRESTIGE PICA 10pt

- 5
- 4
- 3
- 2

FOR CRIMP TOOL USE AMP HANDLE ASSY 58074-1 WITH AMP HEAD ASSY 58063-2

FOR CRIMP TOOL USE DMC HANDLE ASSY M22520/2-01 WITH DMC HEAD ASSY K15

IF THIS IS TO BE MADE BY EXTERNAL VENDER SEND DRAWING 682A1031 WITH THIS DRAWING.

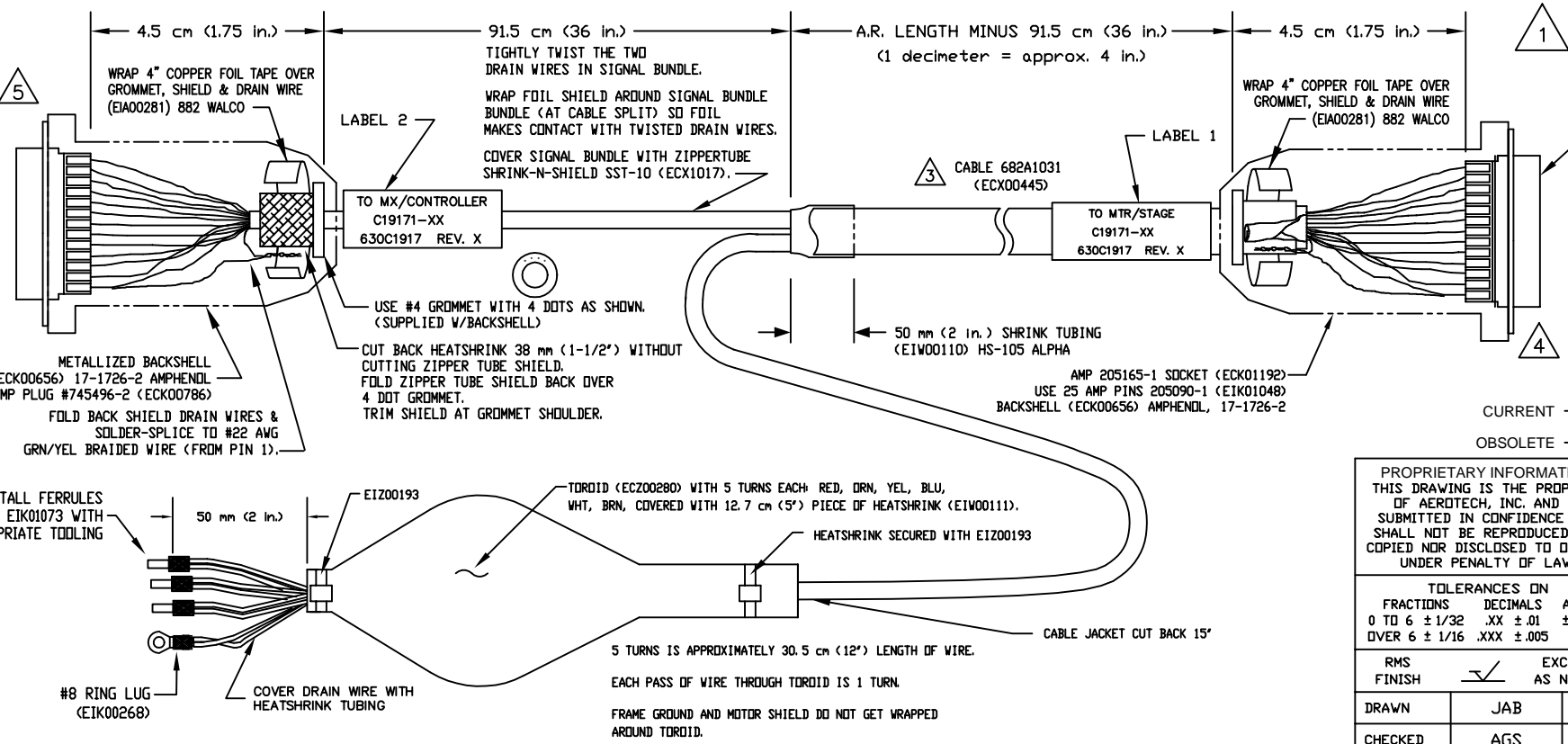
USE 50 mm (2") LENGTHS OF THICK WALL HEATSHRINK TUBING TO BUILD UP CABLE DIAMETER FOR PROPER STRAIN RELIEFING. STRAIN RELIEFING MUST WITHSTAND 35 LB. PULL.

CUT THICK WALL HEATSHRINK TUBING WITH CABLE CUTTER SUCH THAT ENDS ARE PERPENDICULAR TO CABLE AND CUT IS SMOOTH. THICK WALL HEATSHRINK TUBING:  
AMP # 53701-1 (E1W00112) MAX INSIDE DIA = .750" (EXPANDED), MIN INSIDE DIA = .220" (RECOVERED)  
AMP # 53700-1 (E1W00113) MAX INSIDE DIA = .400" (EXPANDED), MIN INSIDE DIA = .150" (RECOVERED)

- 1

STARTING CABLE LENGTH SHOULD BE 38 cm (15 in.) LONGER THAN TOTAL LENGTH OF CABLE. LENGTH OF CABLE (in decimeters) IS DESIGNATED BY THE (XX) IN CABLE NAME.

KEY (ECK00785) 206509-1 AMP, IS TO BE INSERTED INTO PIN 1 (EPOXY INTO PLACE).



PART CODE:		
CURRENT →	C19171-XX	C19171-1 TO 107
OBSOLETE →	BFMCDBA-XX	BFMCDBA-1 TO 35
		LENGTHS 1 TO 107 Decimeters
		LENGTHS 1 TO 35 FT

PROPRIETARY INFORMATION  
THIS DRAWING IS THE PROPERTY OF AEROTECH, INC. AND IS SUBMITTED IN CONFIDENCE AND SHALL NOT BE REPRODUCED NOR COPIED NOR DISCLOSED TO OTHERS UNDER PENALTY OF LAW.

**AEROTECH**®  
AEROTECH, INC. 101 Zeta Drive  
Pittsburgh, PA. 15238  
www.aerotech.com

**CABLE: BL MTR & FB-25DU FLT-25DU-MAX107DM  
FEEDBACK & BRUSHLESS MOTOR CABLE  
(25D / 4 FLYING LEADS TO 25D)**

TOLERANCES ON FRACTIONS DECIMALS ANGLES		
0 TO 6 ± 1/32	.XX ± .01	± 0-30'
DVER 6 ± 1/16	.XXX ± .005	
RMS FINISH	EXCEPT AS NOTED	
DRAWN	JAB	10/19/04
CHECKED	AGS	10/19/04
APPD.	AGS	10/19/04

PART CODE	SIZE	REV.
SEE ABOVE	C	C
<b>630C1917-1</b>		
SCALE NTS	FILE NAME 630C1917-1C1.DWG	SHEET 1 OF 1