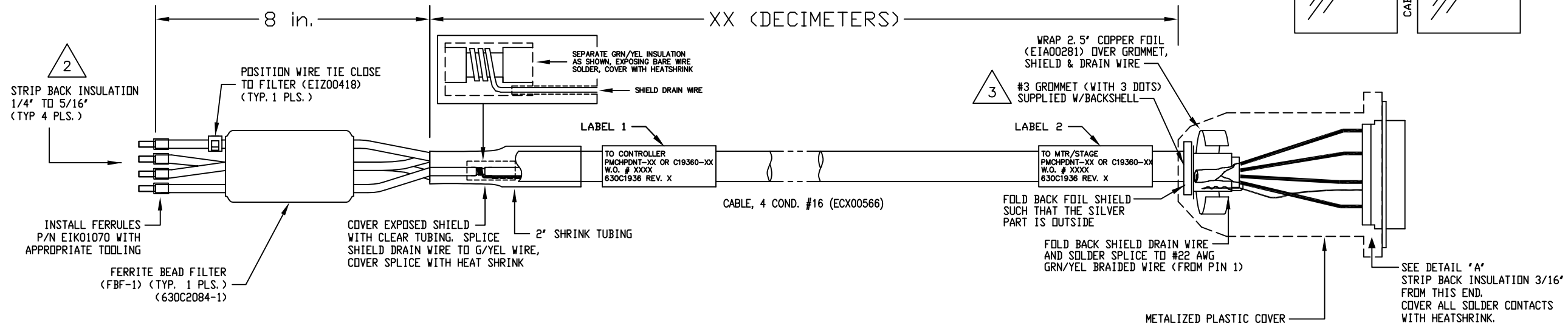
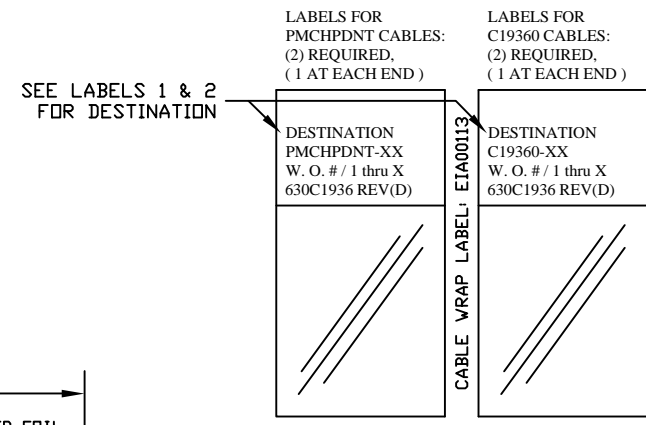
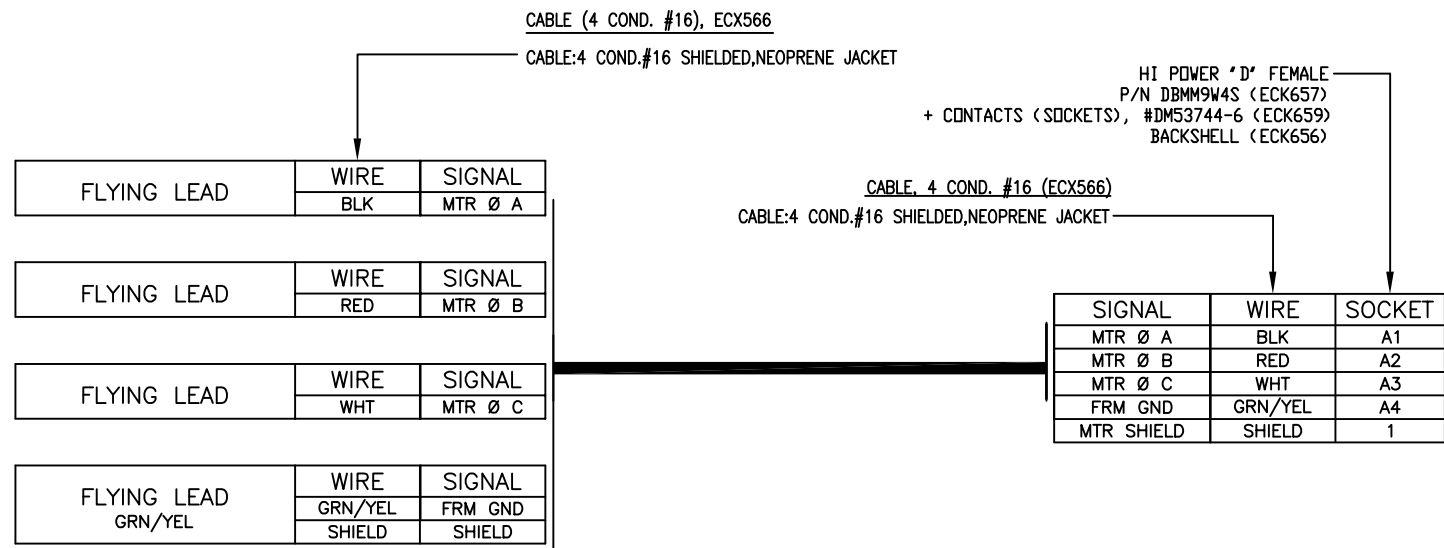


REVISIONS				
REV.	ZONE	DESCRIPTION	BY	DATE
A	-	ECN6602 ADDED TEFLON TUBING AND LUG TO SHIELD	RWR	12/20/02
B	-	ADDED ECN6935	JRF	05/01/03
C	-	ADDED ECN7332	JAB	9/2/03
D	-	ADDED ECN8686	JRF	04/2005

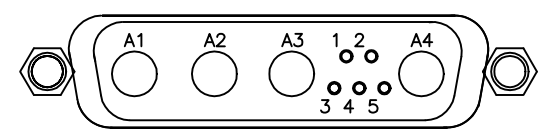


3 USE #3 GROMMET WITH 3 DOTS AS SHOWN BELOW WHICH IS SUPPLIED W/BACKSHELL



2 STRIP INSULATION BACK 1/4" TO 5/16" ADD FERRULES P/N: EIK01070

1 XX (DECIMETER) X .328 = FT. STARTING LENGTH = XX FT + 1.25 FT. BDM VALUE = STARTING LENGTH + 1 FT.



SOLDER SIDE  
**DETAIL "A"**  
VIEWED FROM WIRE SIDE OF CONNECTOR  
HI POWER "D" FEMALE (ECK657)

PART CODE:	
C19360-XX	C19360-1 TO -450 MAX LENGTH (DECIMETERS)
PMCHPDNT-XX	PMCHPDNT-1 TO -150 MAX LENGTH (FEET)

PROPRIETARY INFORMATION  
THIS DRAWING IS THE PROPERTY  
OF AEROTECH, INC. AND IS  
SUBMITTED IN CONFIDENCE AND  
SHALL NOT BE REPRODUCED NOR  
COPIED NOR DISCLOSED TO OTHERS  
UNDER PENALTY OF LAW.

**AEROTECH**®  
AEROTECH, INC. 101 Zeta Drive  
Pittsburgh, PA. 15238  
(412)963-7470  
www.aerotech.com

TOLERANCES ON		
FRACTIONS	DECIMALS	ANGLES
0 TO 6 ± 1/32	.XX ± .01	± 0-30°
OVER 6 ± 1/16	.XXX ± .005	
RMS FINISH	EXCEPT AS NOTED	

**BRUSHLESS MOTOR CABLE**  
**450 DECIMETERS (150') MAX LENGTH**  
**CABLE: BL MTR-FLB-4DU-MAX450DM**

DRAWN	RWR	7/31/01	PART CODE	SIZE	REV.
CHECKED	JLD	7/31/01	SEE ABOVE	C	D
APPD.	JAB	9/2/03	SCALE NTS	FILE NAME	SHEET
				630C1936D1.dwg	1 OF 1