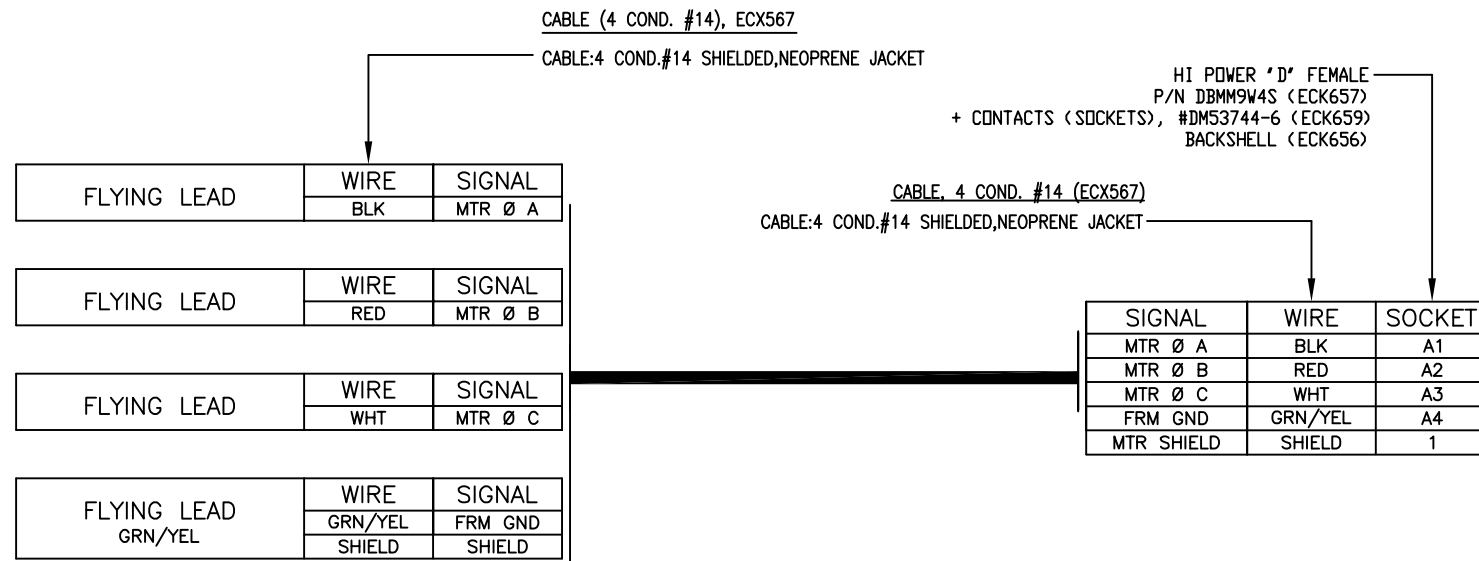


REVISIONS				
REV.	ZONE	DESCRIPTION	DATE	DRAWN
A	-	ADDED ECN13261	3/2011	JFRANEY

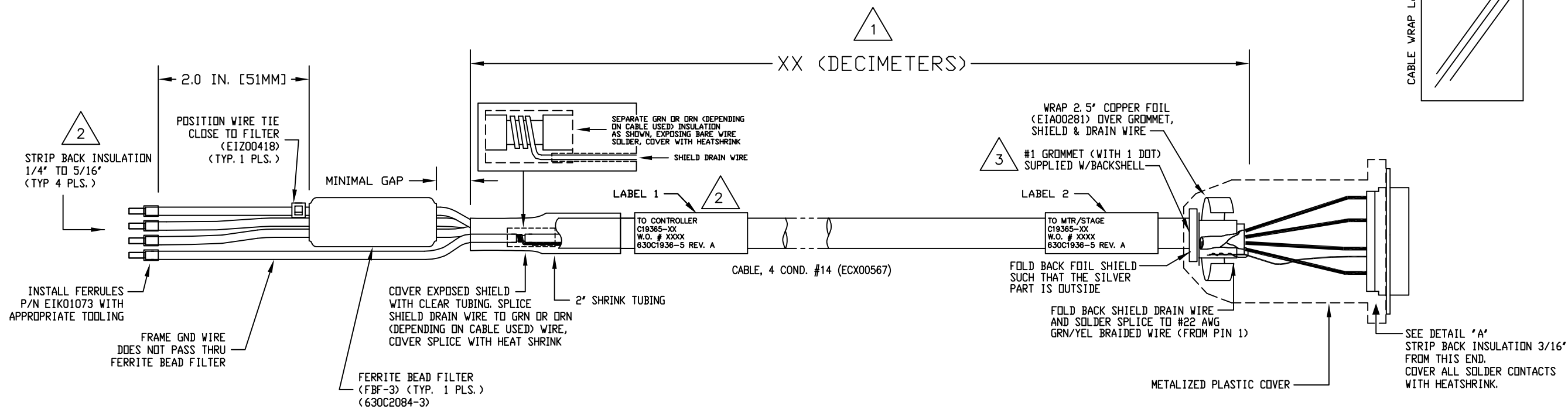


LABELS FOR  
C19365 CABLES:  
(2) REQUIRED,  
(1 AT EACH END)

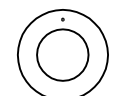
SEE LABELS 1 & 2  
FOR DESTINATION

DESTINATION  
C19365-XX  
W. O. # / 1 thru X  
630C1936-5 REV(A)

CABLE WRAP LABEL: ETA00113

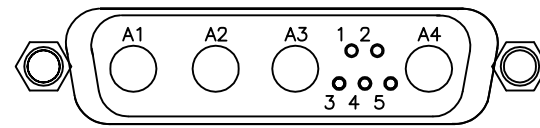


3 USE #1 GROMMET WITH 1 DOT AS SHOWN BELOW  
WHICH IS SUPPLIED W/BACKSHELL



2 STRIP INSULATION BACK 1/4" TO 5/16"  
ADD FERRULES P/N: EIK01073

1 XX (DECIMETER) X .328 = FT.  
STARTING LENGTH = XX FT + 1.25 FT.  
BOM VALUE = STARTING LENGTH + 1 FT.



SOLDER SIDE  
DETAIL "A"

VIEWED FROM WIRE SIDE OF CONNECTOR  
HI POWER 'D' FEMALE (ECK657)

PART CODE:		C19365-XX	C19365-1 TO -450 MAX LENGTH (DECIMETERS)
<p>PROPRIETARY INFORMATION THIS DRAWING IS THE PROPERTY OF AEROTECH, INC. AND IS SUBMITTED IN CONFIDENCE AND SHALL NOT BE REPRODUCED NOR COPIED NOR DISCLOSED TO OTHERS UNDER PENALTY OF LAW.</p>			
<p>TOLERANCES ON FRACTIONS DECIMALS ANGLES 0 TO 6 ± 1/32 .XX ± .01 ± 0-30' OVER 6 ± 1/16 .XXX ± .005</p>		<p>AEROTECH® AEROTECH, INC. 101 Zeta Drive Pittsburgh, PA. 15238 (412)963-7470 www.aerotech.com</p>	
<p>BRUSHLESS MOTOR CABLE 450 DECIMETERS (150') MAX LENGTH CABLE: BL MTR-FLB-4DU-15ARMS-MAX450DM</p>			
RMS FINISH	EXCEPT AS NOTED	PART CODE	SIZE
DRAWN	MS	8/7/07	SEE ABOVE
CHECKED	AGS	8/7/07	C
APPD.	AGS	8/7/07	630C1936-5
SCALE	NTS	FILE NAME	630C1936-5A1.dwg
SHEET	1	OF	1