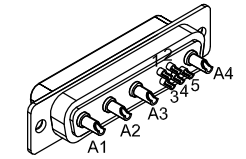


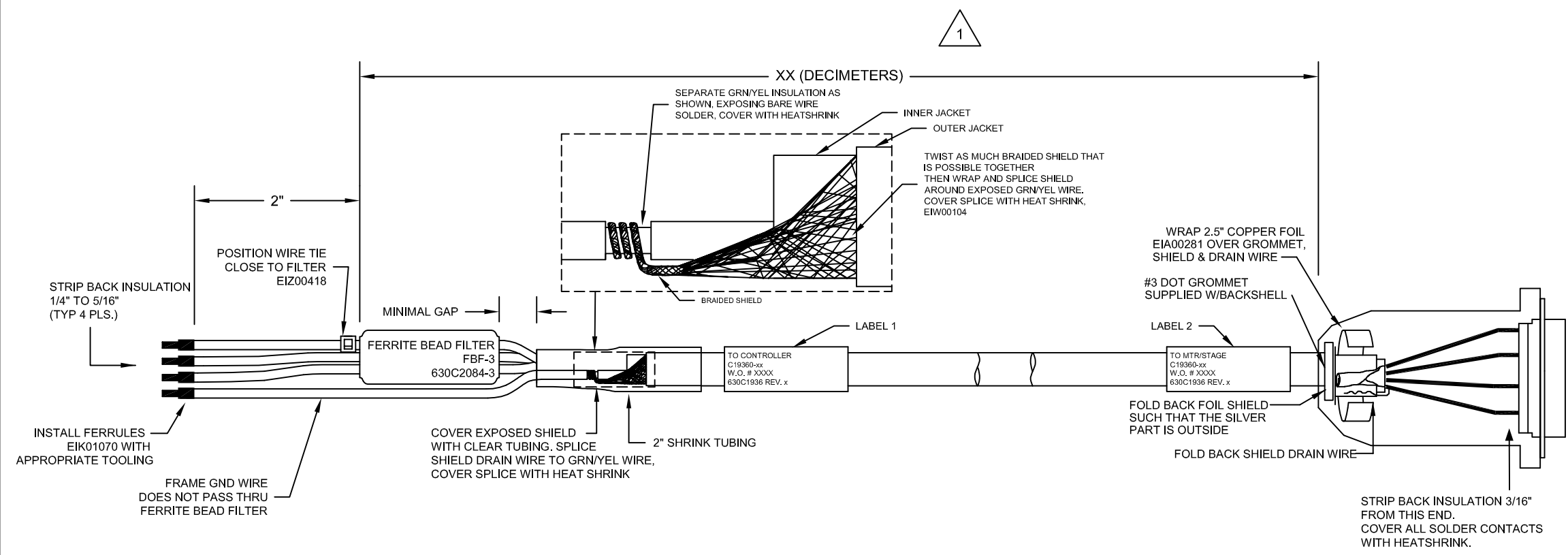
REVISIONS			
REV.	DESCRIPTION	BY	DATE
A	ECN 6602 ADDED TEFLON TUBING AND LUG TO SHIELD	RWR	12/20/02
B	ADDED ECN 6935	JRF	05/01/03
C	ADDED ECN 7332	JAB	9/2/03
D	ADDED ECN 8686	JRF	04/2005
E	ADDED ECN 13209	JRF	03/2011
F	ADDED ECO 69	JFM	7/14/2017
G	ADDED ECO 2254 (Added Note 0)	JFM	9/4/2018

FERRULE, EIK01070	WIRE	SIGNAL
	BLK	MTR Ø A
FERRULE, EIK01070	WIRE	SIGNAL
	RED	MTR Ø B
FERRULE, EIK01070	WIRE	SIGNAL
	WHT	MTR Ø C
FERRULE, EIK01070	WIRE	SIGNAL
	GRN/YEL	FRM GND
	SHIELD	SHIELD

SIGNAL	WIRE	SOCKET
MTR Ø A	BLK	A1
MTR Ø B	RED	A2
MTR Ø C	WHT	A3
FRM GND	GRN/YEL	A4
SHIELD	SHIELD	CASE



HPD FEMALE "D", ECK00657
 SOCKET CONTACT, ECK00659
 BACK SHELL, ECK00656



1 XX (DECIMETER) X .328 = FT.
 0 All Components MUST be UL approved

LABELS:
 2 REQUIRED,
 (1 AT EACH END)
 SEE LABELS 1 & 2
 FOR DESTINATION
 DESTINATION
 C19360-xx
 W.O. # / 1 thru x
 630C1936 REV x
 CABLE WRAP LABEL: EIA00113

PROPRIETARY INFORMATION
 THIS DRAWING IS THE PROPERTY
 OF AEROTECH, INC. AND IS
 SUBMITTED IN CONFIDENCE AND
 SHALL NOT BE REPRODUCED NOR
 COPIED NOR DISCLOSED TO OTHERS
 UNDER PENALTY OF LAW.

AEROTECH
 AEROTECH, INC. 101 Zeta Drive
 Pittsburgh, PA. 15238
 (412)963-7470
 www.aerotech.com

TOLERANCES ON		
FRACTIONS	DECIMALS	ANGLES
0 TO 6 ±1/32	.XX ±.01	± 0-30'
OVER 6 ±1/16	.XXX ±.005	

RMS FINISH EXCEPT AS NOTED

BRUSHLESS MOTOR CABLE
BL MTR-FLB-4D-10ARMS-MAX450DM

DRAWN	RWR	7/31/01	PART CODE	SIZE	REV.
CHECKED	JLD	7/31/01	C19360	C	G
APPD.	JAB	9/2/03	SCALE	FILE NAME	SHEET
			NTS	630C1936.Dwg	1 OF 1