

REVISIONS			
REV.	DESCRIPTION	DATE	DRAWN
A	ADDED ECN6934	05/03	JRF
B	ADDED ECN12381	12/09	JRF
C	ADDED ECN13567	9/6/11	EJB
D	ADDED ECN15005	8/9/13	AMD
E	ADDED ECN 15241	11/27/13	JFM

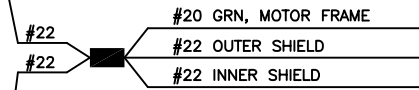
PIN	WIRE	SIGNAL
13	-	-
12	#24 WHT	CW/+ LMT
11	#24 BLU	HALL C
10	#24 YEL	HALL A
9	-	-
8	-	-
7	#24 BRN	MKR
6	#24 BLK	MKR-N
5	#24 ORN	HALL B
4	-	-
3	#22 WHT/BLU #22 WHT/BRN	ENC +5V
2	#24 WHT/RED	THERM
1	#22 GRN/BLK	OUTER SHIELD

PIN	WIRE	SIGNAL
A5	#22 GRN/BLK	INNER SHIELD
	#20 GRN	FRM GND
A3	#20 WHT	MTR ØC
	#20 BRN	
A2	#20 RED	MTR ØB
	#20 ORN	
A1	#20 BLU	MTR ØA
	#20 YEL	

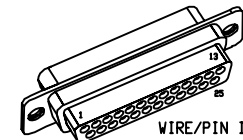
SIGNAL	WIRE	PIN
MTR Ø C	#20 WHT *	13
MTR Ø B	#20 RED *	12
MTR Ø A	#20 BLU *	11
FRAME & SHIELDS	#22 GRN	10
HALL C	#24 BLU	9
HALL A	#24 YEL	8
CCW/- LMT	#24 GRY	7
LMT COM	#24 PNK	6
ENC COM	#22 WHT/YEL #22 WHT/GRN	5
MKR-N	#24 BLK	4
SIN-N	#24 RED	3
COS-N	#24 VIO	2
NO CONNECTION	INSERT KEY	1
COS	#24 WHT/BLK	14
SIN	#24 GRN	15
MKR	#24 BRN	16
ENC +5V	#22 WHT/BRN #22 WHT/BLU #24 WHT/VIO	17
-	-	18
CW/+ LMT	#24 WHT	19
THERM	#24 WHT/RED	20
HALL B	#24 ORN	21
FRAME & SHIELDS	#22 GRN	22
MTR Ø A	#20 YEL *	23
MTR Ø B	#20 ORN *	24
MTR Ø C	#20 BRN *	25

ECX00445

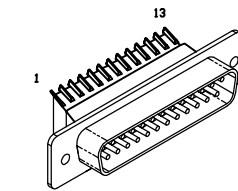
UNUSED WIRES:
None



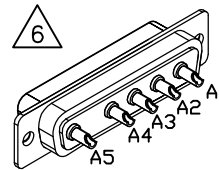
SPLICE 2 PIECES OF #22 GREEN TO INNER, OUTER SHIELDS, & MOTOR FRAME THEN TERMINATE TO IDC CON.



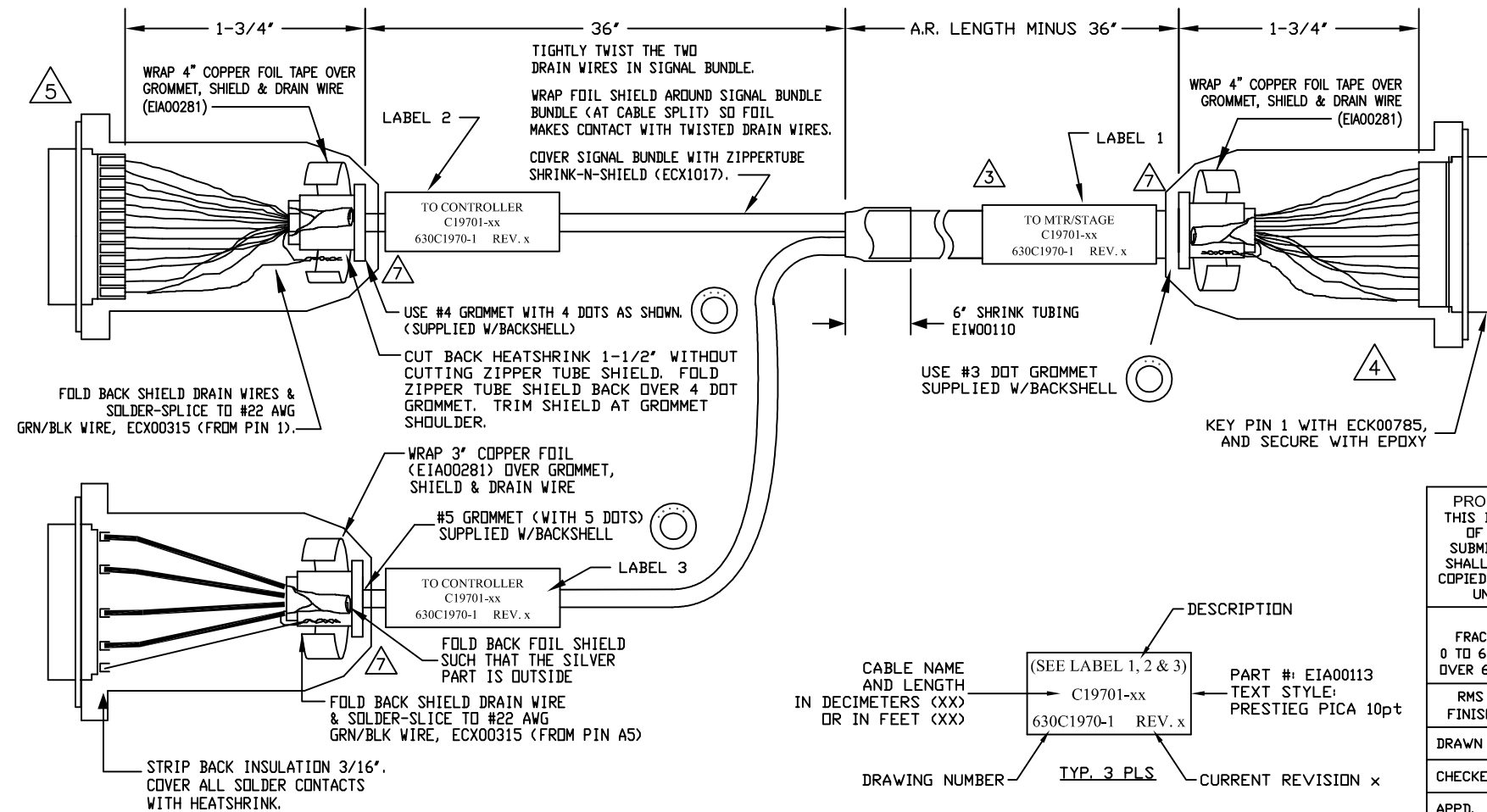
25 PIN FEMALE D-STYLE, ECK01192
USE 25 AMP PINS, EIK01048
BACKSHELL, ECK00656



BACKSHELL, ECK00656
25 PIN MALE D-STYLE, ECK00786



5 PIN MALE HPD, ECK01236
PINS, ECK00660
BACKSHELL, ECK00656



- 7 VERIFY GROMMET IS SECURED TIGHTLY AROUND CABLE. IF NECESSARY BUILD UP WITH SHRINK TUBING.
- 6 INSTALL ALL PINS IN MOTOR CONNECTOR.
- 5 FOR CRIMP TOOL USE AMP HANDLE ASSY 58074-1 WITH AMP HEAD ASSY 58063-2
- 4 FOR CRIMP TOOL USE DMC HANDLE ASSY M22520/2-01 WITH DMC HEAD ASSY K1S
- 3 IF THIS CABLE IS TO BE MADE BY A VENDOR, SEND DRAWING 682A1031 WITH THIS DRAWING.
- 1 STARTING CABLE LENGTH SHOULD BE 5 IN LONGER THAN TOTAL LENGTH OF CABLE. LENGTH OF CABLE IS DESIGNATED BY THE (XX) IN CABLE NAME.

PROPRIETARY INFORMATION
THIS DRAWING IS THE PROPERTY
OF AEROTECH, INC. AND IS
SUBMITTED IN CONFIDENCE AND
SHALL NOT BE REPRODUCED NOR
COPIED NOR DISCLOSED TO OTHERS
UNDER PENALTY OF LAW.



AEROTECH, INC. 101 Zeta Drive
Pittsburgh, PA. 15238
(412)963-7470
www.aerotech.com

TOLERANCES ON	FRACTIONS		DECIMALS		ANGLES	
	0 TO 6	± 1/32	.XX	± .01	± 0-30'	
RMS FINISH						
DRAWN	11/13/2013	JFM				
CHECKED	11/13/2013	AGS				
APPD.	11/13/2013	JFM				

FEEDBACK & BRUSHLESS MOTOR CABLE			
195 DECIMETERS (64') MAX LENGTH			
CABLE: BL MTR & FB-25DU 5DU-25DU-MAX195DM			
PART CODE	SIZE	REV.	
C19701-XX	C	E	
SCALE NTS	FILE NAME 630C1970-1E1.Dwg	SHEET	1 OF 1

CABLE NAME AND LENGTH IN DECIMETERS (XX) OR IN FEET (XX)
DRAWING NUMBER
TYP. 3 PLS
CURRENT REVISION x
PART #: EIA00113
TEXT STYLE: PRESTIEG PICA 10pt