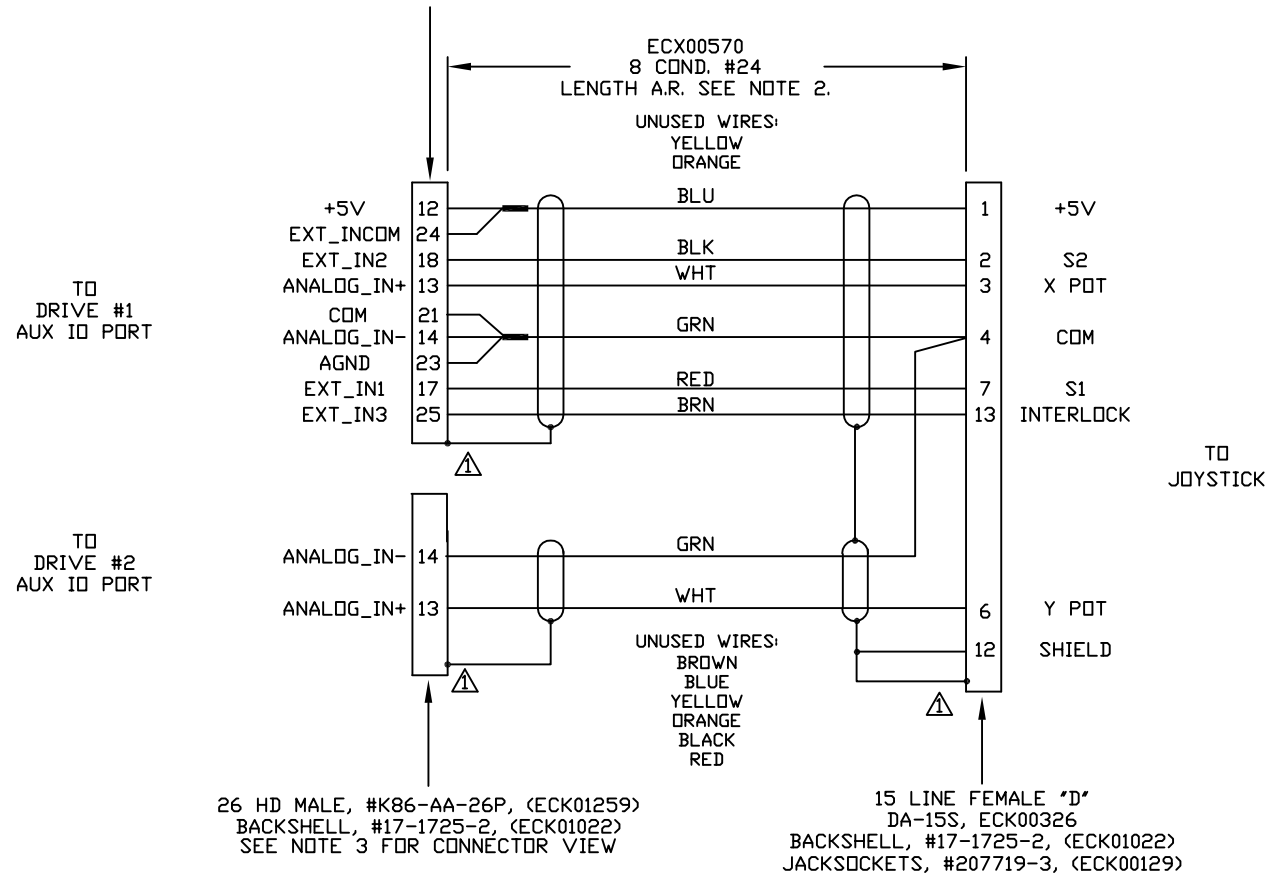


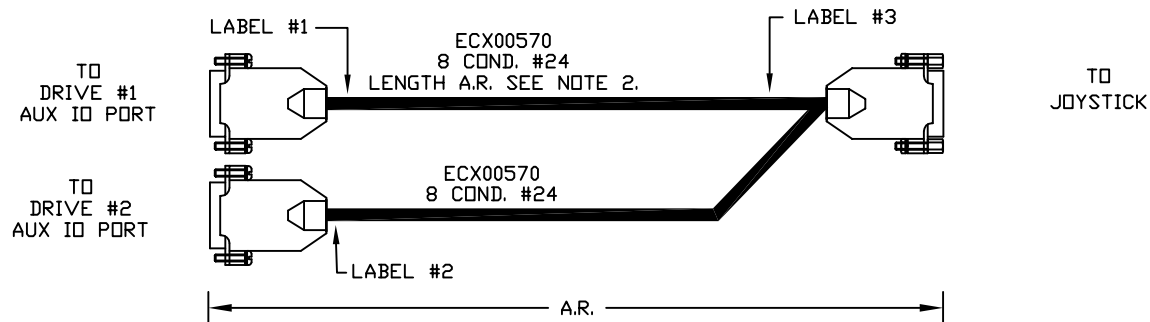
REVISIONS				
REV.	ZONE	DESCRIPTION	DATE	DRAWN

26 HD MALE, #K86-AA-26P, (ECK01259)  
BACKSHELL, #17-1725-2, (ECK01022)  
SEE NOTE 3 FOR CONNECTOR VIEW

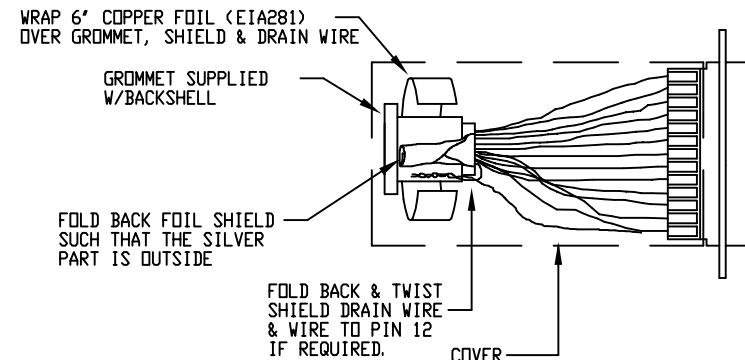


26 HD MALE, #K86-AA-26P, (ECK01259)  
BACKSHELL, #17-1725-2, (ECK01022)  
SEE NOTE 3 FOR CONNECTOR VIEW

15 LINE FEMALE "D"  
DA-15S, ECK00326  
BACKSHELL, #17-1725-2, (ECK01022)  
JACKSOCKETS, #207719-3, (ECK00129)

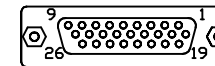


**CONNECTOR SHIELDING**

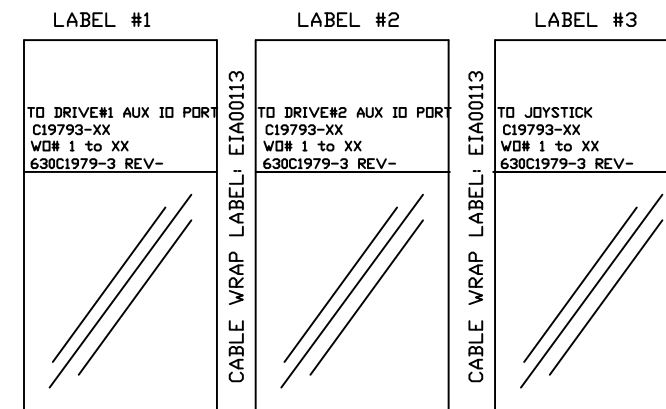


2. **CABLE LENGTH**  
CAUTION, CABLE LENGTHS (XX) ARE IN DECIMETERS  
EXAMPLE: C19793-30  
30 = 30 DECIMETERS (3 METERS) = 10FT.

3. **CONNECTOR VIEW FROM SOLDER SIDE.**



**LABELLING**



PART CODE:		
C19793-XX	C19793-1 TO 380	LENGTHS 1 TO 38 METERS

PROPRIETARY INFORMATION  
THIS DRAWING IS THE PROPERTY  
OF AEROTECH, INC. AND IS  
SUBMITTED IN CONFIDENCE AND  
SHALL NOT BE REPRODUCED NOR  
COPIED NOR DISCLOSED TO OTHERS  
UNDER PENALTY OF LAW.



AEROTECH, INC. 101 Zeta Drive  
Pittsburgh, PA. 15238  
(412)963-7470  
www.aerotech.com

TOLERANCES ON		
FRACTIONS	DECIMALS	ANGLES
0 TO 6 ± 1/32	.XX ± .01	± 0-30'
OVER 6 ± 1/16	.XXX ± .005	

RMS FINISH  EXCEPT AS NOTED

**NDRIVEHP/HL DUAL AXIS JOYSTICK EXTENSION CABLE**

CABLE: JSXT-26HD 26HD-15DU-MAX300DM

DRAWN	AGS	12/04	PART CODE	SIZE	REV.
CHECKED	EJB	12/04	-	C	-
APPD.	EJB	12/04	630C1979-3		
SCALE FULL		FILE NAME 630C1979-301.DWG	SHEET 1 OF 1		