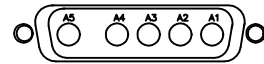


REVISIONS				
REV.	ZONE	DESCRIPTION	DATE	DRAWN

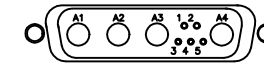
HI POWER "D" 5-PIN MALE (ECK01236) DETAILS



SOLDER SIDE
DETAIL "A"

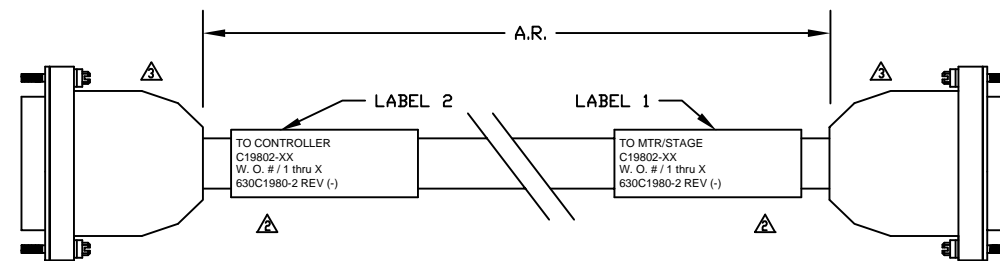
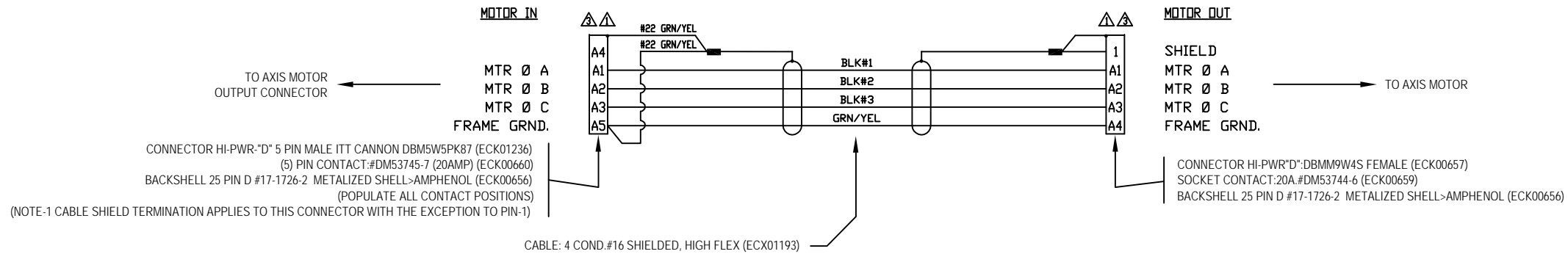
VIEWED FROM WIRE SIDE OF CONNECTOR

HI POWER "D" FEMALE (ECK00657) DETAILS

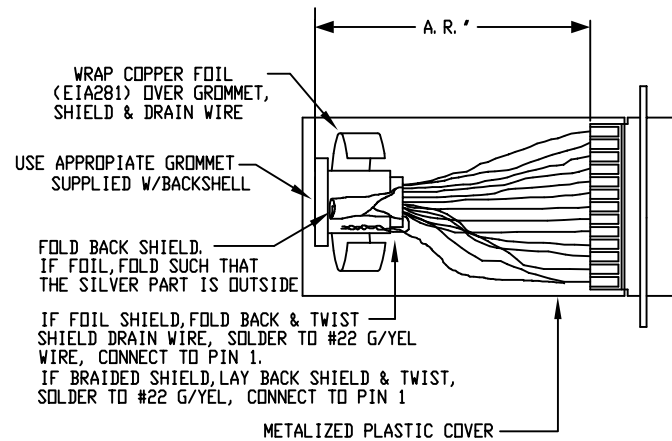


SOLDER SIDE
DETAIL "B"

VIEWED FROM WIRE SIDE OF CONNECTOR

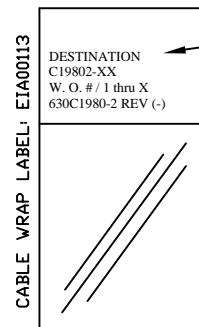


1 SHIELD TERMINATION WITH METALIZED PLASTIC COVERS WITH PIN 1 & SHIELD TIED TOGETHER.



2 CABLE LABELS LABEL CABLES AS PER ASSEMBLY VIEWS BELOW

LABELS FOR C19802 CABLES:
(2) REQUIRED,
(1 AT EACH END)



SEE LABELS 1 & 2 FOR DESTINATION

3 CONNECTOR HARDWARE ALL CONNECTOR HARDWARE IS ENGLISH (4-40)

CUSTOMER NAME: customer
ORDER NUMBER: nnnnnn

APPROVED BY: xxx RELEASE DATE: nn/nn/nn
CUST FILE NAME: nnnnnn 630C1980-201.dwg

PROPRIETARY INFORMATION THIS DRAWING IS THE PROPERTY OF AEROTECH, INC. AND IS SUBMITTED IN CONFIDENCE AND SHALL NOT BE REPRODUCED NOR COPIED NOR DISCLOSED TO OTHERS UNDER PENALTY OF LAW.		AEROTECH, INC. 101 Zeta Drive Pittsburgh, PA. 15238 (412)963-7470 www.aerotech.com	
BRUSHLESS MOTOR CABLE HIGH FLEX, 450 DECIMETERS (150') MAX LENGTH CABLE:BL MTR-5DU-4DU-HF-MAX450DM			
TOLERANCES ON FRACTIONS DECIMALS ANGLES 0 TO 6 ± 1/32 .XX ± .01 ± 0-30' OVER 6 ± 1/16 .XXX ± .005		RMS FINISH <input checked="" type="checkbox"/> EXCEPT AS NOTED	
DRAWN	RWR	10/28/03	PART CODE
CHECKED	JLD	10/28/03	C19802-XX
APPD.	JLD	10/28/03	SIZE C
SCALE NTS		FILE NAME 630C1980-201.DWG	REV. -
SHEET 1 OF 1		630C1980-2	