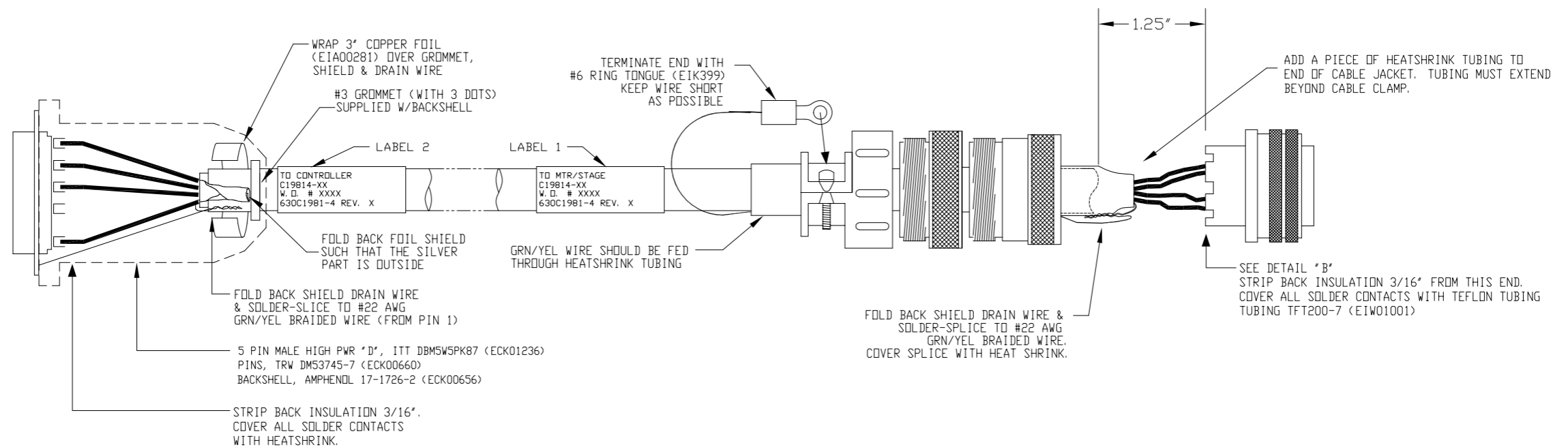
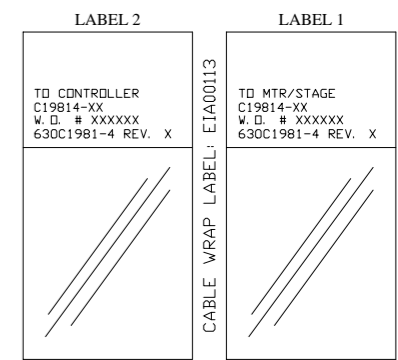
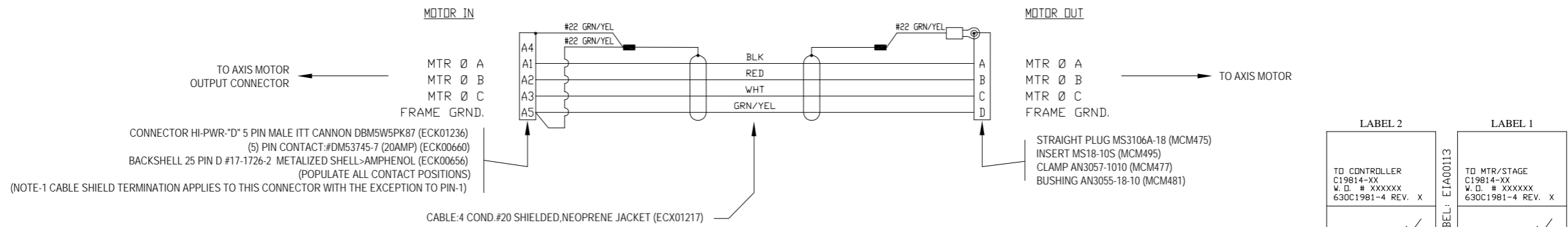
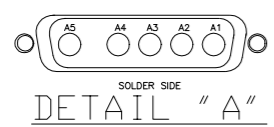


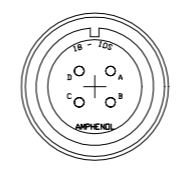
REVISIONS				
REV.	ZONE	DESCRIPTION	DATE	DRAWN



HI POWER "D" 5-PIN MALE (ECK01236) DETAILS



VIEWED FROM WIRE SIDE OF CONNECTOR



VIEWED FROM WIRE SIDE OF CONNECTOR
AMPHENOL SOCKET INSERT MS18-10 (MCM495)

PROPRIETARY INFORMATION THIS DRAWING IS THE PROPERTY OF AEROTECH, INC. AND IS SUBMITTED IN CONFIDENCE AND SHALL NOT BE REPRODUCED NOR COPIED NOR DISCLOSED TO OTHERS UNDER PENALTY OF LAW.			AEROTECH, INC. 101 Zeta Drive Pittsburgh, PA. 15238 (412)963-7470 TWX710-795-3125	
TOLERANCES ON FRACTIONS DECIMALS ANGLES 0 TO 6 ± 1/32 .XX ± .01 ± 0-30' OVER 6 ± 1/16 .XXX ± .005			BRUSHLESS MOTOR CABLE 450 DECIMETERS (150') MAX LENGTH CABLE: BL MTR-5DU-4MS-LP1-MAX450DM	
RMS FINISH	EXCEPT AS NOTED		PART CODE	SIZE
DRAWN	10/11/06	RWR	C19814-XX	C
CHECKED	10/11/06	JLD	630C1981-4	
APPD.	10/11/06	JLD	SCALE NTS	FILE NAME 630C1981-401.DWG
			SHEET	1 OF 1