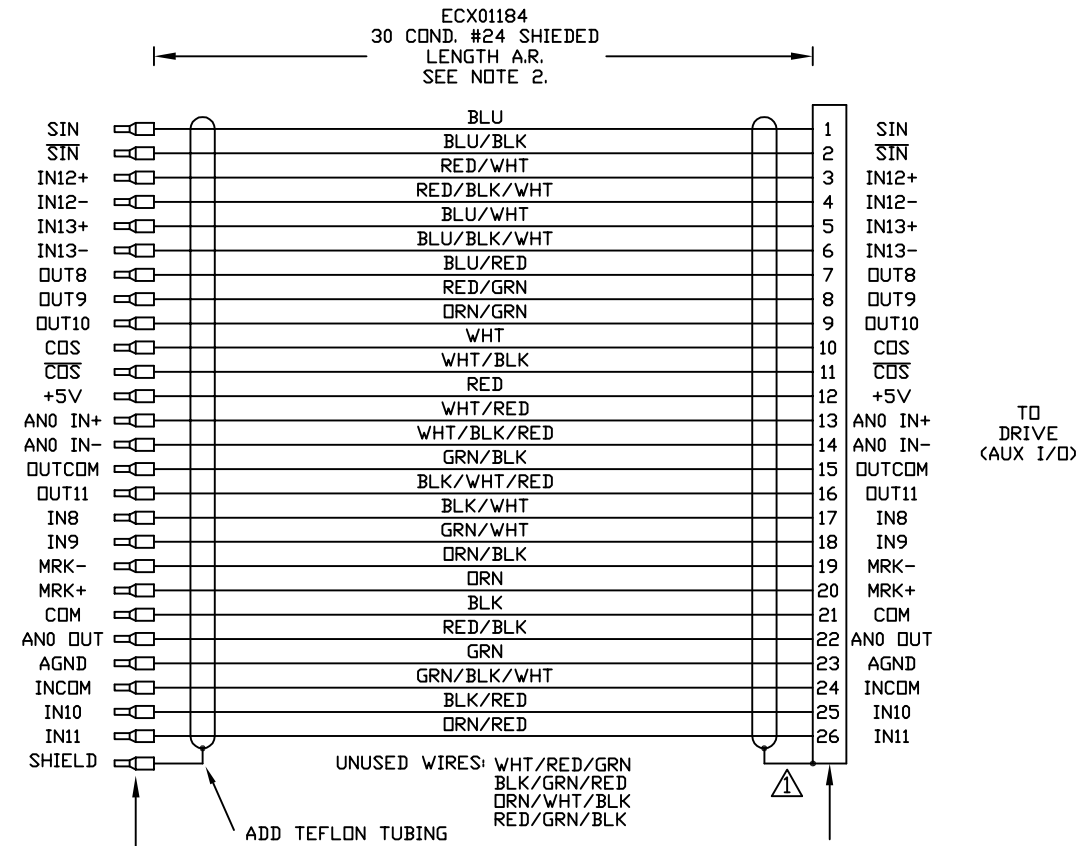
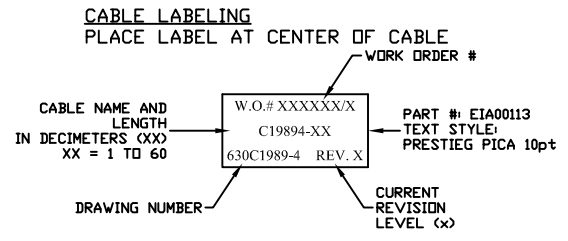
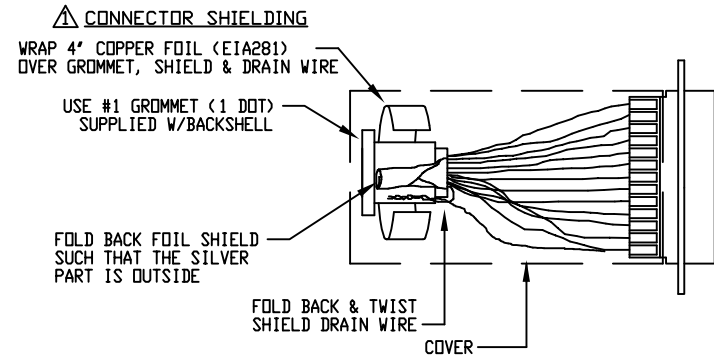
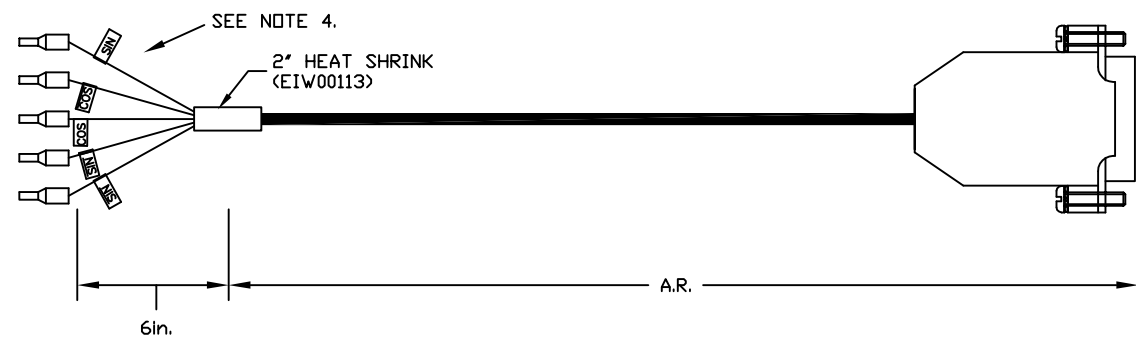


REVISIONS				
REV.	ZONE	DESCRIPTION	DATE	DRAWN
A		ADDED ECN8250	11/5/04	EJB
B		ADDED ECN11284	08/08	JRF



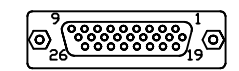
FERRULE, #3200179 (EIK01084) TYP. 27 PLS.
ADD BRADY WIRE MARKERS SEE NOTE 4.

26 HD MALE, #K86-AA-26P, (ECK01259)
BACKSHELL, #17-1725-2, (ECK01022)
SEE NOTE 3



2. CABLE LENGTH
CAUTION, CABLE LENGTHS (XX) ARE IN DECIMETERS
EXAMPLE: C19894-3
3 = 3 DECIMETERS (300mm) = 1FT.

3. CONNECTOR VIEW FROM SOLDER SIDE.



4. WIRE SLEEVES
APPLY LABEL SLEEVES TO WIRES
IDENTIFYING EACH WIRE SIN, CDS... ECT.
USE LABEL SLEEVE EIA01161

PROPRIETARY INFORMATION THIS DRAWING IS THE PROPERTY OF AEROTECH, INC. AND IS SUBMITTED IN CONFIDENCE AND SHALL NOT BE REPRODUCED NOR COPIED NOR DISCLOSED TO OTHERS UNDER PENALTY OF LAW.		AEROTECH, INC. 101 Zeta Drive Pittsburgh, PA. 15238 (412)963-7470 www.aerotech.com	
TOLERANCES ON FRACTIONS DECIMALS ANGLES 0 TO 6 ± 1/32 .XX ± .01 ± 0-30' OVER 6 ± 1/16 .XXX ± .005		A3200 PSO ENCODER CABLE (AUX I/O TO FLYING LEADS)	
RMS FINISH	EXCEPT AS NOTED		
DRAWN	EJB	3/28/03	REV. B
CHECKED	AGS	3/28/03	
APPD.	AGS	3/28/03	
SCALE NTS		FILE NAME 630C1989-4B1.DWG	SHEET 1 of 1
PART CODE		SIZE	
C19894-XX		C	630C1989-4