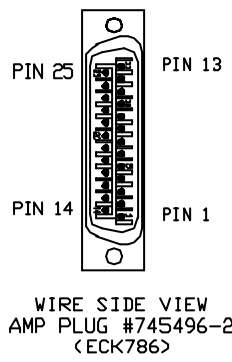


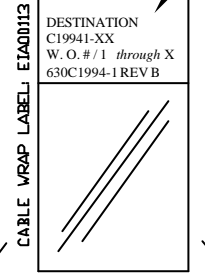
REVISIONS				
REV.	ZONE	DESCRIPTION	DATE	DRAWN
A		ADDED ECN7104	06/03	JRF
B		ADDED ECN10805	01/08	JFM

AMP PLUG #745496-2 (ECK786)
 AMPHENDL BACKSHELL #17-1726-2 (ECK656)

PIN	WIRE	SIGNAL
13	WHT/PINK	BRAKE-
12	PINK	CW/+ LIMIT
11	YEL/BRN	HALL C
10	GRY/BRN	HALL A
9	-	-
8	-	-
7	YEL	MKR
6	WHT/YEL	MKR-N
5	WHT/GRN	HALL B
4	-	-
3	VIO	ENCODER +5V
	WHT/BLK	
	BRN/GRN	
	WHT/BLU	
2	-	-
1	SHIELD	SIGNAL SHIELD
14	WHT	COS
15	WHT/GRY	COS-N
16	RED	LMT +5V
17	BLU	SIN
18	RED/BLU	SIN-N
19	-	-
20	BLK	LMT COM
21	GRN	ENCODER COMMON
	BRN/BLU	
	BRN/RED	
	WHT/RED	
	GRY	
22	BRN	HOME LIMIT
23	-	-
24	GRY/PINK	CCW/- LIMIT
25	PINK/BRN	BRAKE+

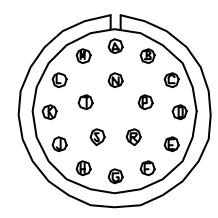


LABELS:
 2 REQUIRED,
 (1 AT EACH END)
 SEE LABELS
 1 & 2 FOR
 DESTINATION



STRAIGHT PLUG MS3106A-20 (NCM454)
 INSERT MS20-29S (NCM464)
 CLAMP 97-3057-1012 (NCM457)
 BUSHING AN3055-22-12 (NCM493)

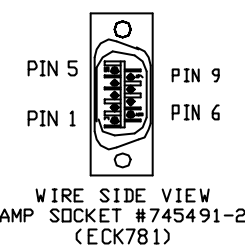
SIGNAL	WIRE	SOCKET
ENCODER COMMON	GRN	G
	BRN/BLU	
	BRN/RED	
	WHT/RED	
GRY	H	
VIO		
WHT/BLK		
BRN/GRN		
WHT/BLU	J	
SIGNAL SHIELD		
LIMIT SHIELD	F	
MRK-N		
WHT/YEL	S	
PINK/BRN		
BRAKE+	R	
-		
YEL	E	
MKR		
GRY/BRN	K	
HALL A		
-	L	
WHT/PINK		
BRAKE-	T	
YEL/BRN		
HALL C	P	
RED/BLU		
SIN-N	D	
WHT/GRN		
HALL B	M	
-		
BLU	C	
SIN		
WHT/GRY	B	
COS-N		
WHT	A	



LUTZE #117107
 (25 COND. #24), ECX01192

AMP SOCKET #745491-2 (ECK781)
 AMPHENDL BACKSHELL #17-1724-2 (ECK1021)

SIGNAL	WIRE	SOCKET
LMT +5V	RED	1
LMT COM	BLK	2
CW/+ LIMIT	PINK	3
HOME LIMIT	BRN	4
CCW/- LIMIT	GRY/PINK	5
SHIELD	LIMIT SHIELD	CASE



4 USE 2' LENGTHS OF THICK WALL HEATSHRINK TUBING (EIW00113 - QTY 1, EIW00112 - QTY 1) TO BUILD UP CABLE DIAMETER FOR PROPER STRAIN RELIEFING. STRAIN RELIEFING MUST WITHSTAND 35 LB. PULL.

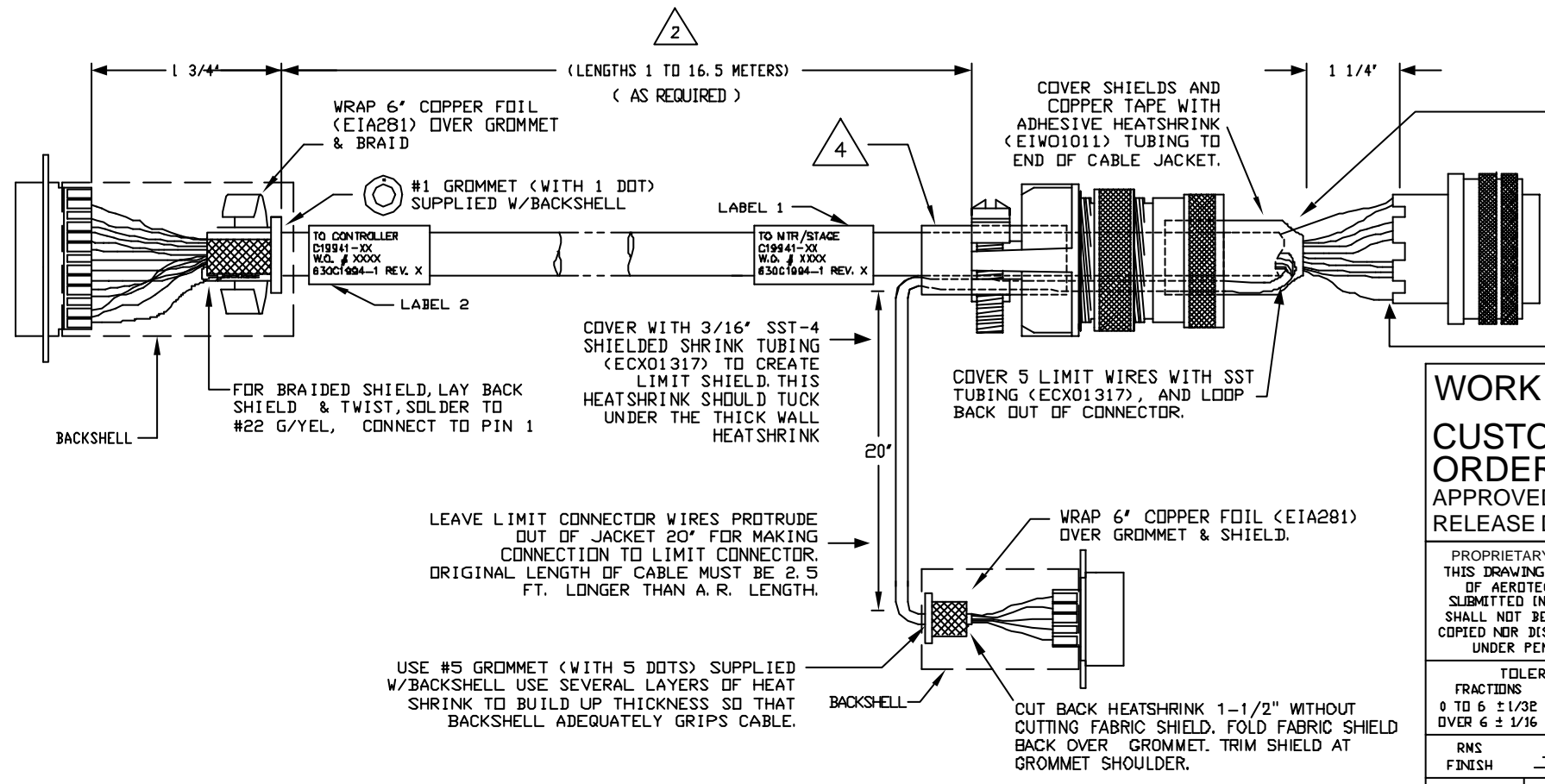
CUT THICK WALL HEATSHRINK TUBING WITH CABLE CUTTER SUCH THAT ENDS ARE PERPENDICULAR TO CABLE AND CUT IS SMOOTH.

THICK WALL HEATSHRINK TUBING:
 AMP # 53701-1 (EIW00112)
 MAX INSIDE DIA = .750" (EXPANDED)
 MIN INSIDE DIA = .220" (RECOVERED)
 AMP # 53700-1 (EIW00113)
 MAX INSIDE DIA = .400" (EXPANDED)
 MIN INSIDE DIA = .150" (RECOVERED)

3 FOR CRIMP TOOL USE AMP HANDLE ASSY 58074-1 WITH AMP HEAD ASSY 58063-2

2 STARTING CABLE LENGTH = 2.5 FT BEYOND SPECIFIED CABLE LENGTH DO NOT EXCEED LENGTH OF 54 FEET FOR THIS DESIGN

1 CABLE OUTER DIAMETER IS 0.389 INCH MINIMUM BEND RADIUS FOR CONTINUOUS FLEX IS 4.6 INCH



TERMINATING BOTH SHIELDS TO EACH OTHER AND TO PIN J:

1. FOLD BACK MAIN SHIELD.
2. SOLDER MAIN SHIELD TO #22 GRN/YEL WIRE.
3. WRAP SHIELD WITH 1 LAYER OF COPPER TAPE.
4. CUT BACK SST TUBING & FOLD BACK INNER FABRIC SHIELD.
5. WRAP FABRIC SHIELD WITH 1 LAYER OF COPPER TAPE.
6. INSULATE WITH ADHESIVE SHRINK TUBING (EIW01011).

STRIP BACK INSULATION 3/16" FROM THIS END
 COVER ALL SOLDER CONTACTS WITH TEFLON TUBING TFT200-10 (EIW01000)

WORK ORDER #: #####

CUSTOMER NAME: XXXXXXXXXXXX

ORDER NUMBER: #####

APPROVED BY: XXX

RELEASE DATE: ##/##/#### CUST FILE NAME: XXXXXX 630C1994-1B1.Dwg

PROPRIETARY INFORMATION
 THIS DRAWING IS THE PROPERTY OF AEROTECH, INC. AND IS SUBMITTED IN CONFIDENCE AND SHALL NOT BE REPRODUCED NOR COPIED NOR DISCLOSED TO OTHERS UNDER PENALTY OF LAW.

AEROTECH AEROTECH, INC. 101 Zeta Drive
 Pittsburgh, PA. 15238
 (412)963-7470
 www.aerotech.com

TOLERANCES ON FRACTIONS DECIMALS ANGLES
 0 TO 6 ±1/32 XX ±.01 ± 0-30'
 OVER 6 ±1/16 XXX ±.005

RNS FINISH EXCEPT AS NOTED

BRUSHLESS FEEDBACK CABLE
 165 DECIMETERS (54') MAX LENGTH
CABLE: BL FB-25DU-17MS 9DU-HF MAX165DM

DRAWN	EJB	6/8/03	PART CODE	SIZE	REV.
CHECKED	JLD	6/8/03	C19941-XX	C	B
APPD.	JLD	6/8/03	SCALE NTS	FILE NAME 630C1994-1B1.dwg	SHEET 1 OF 1