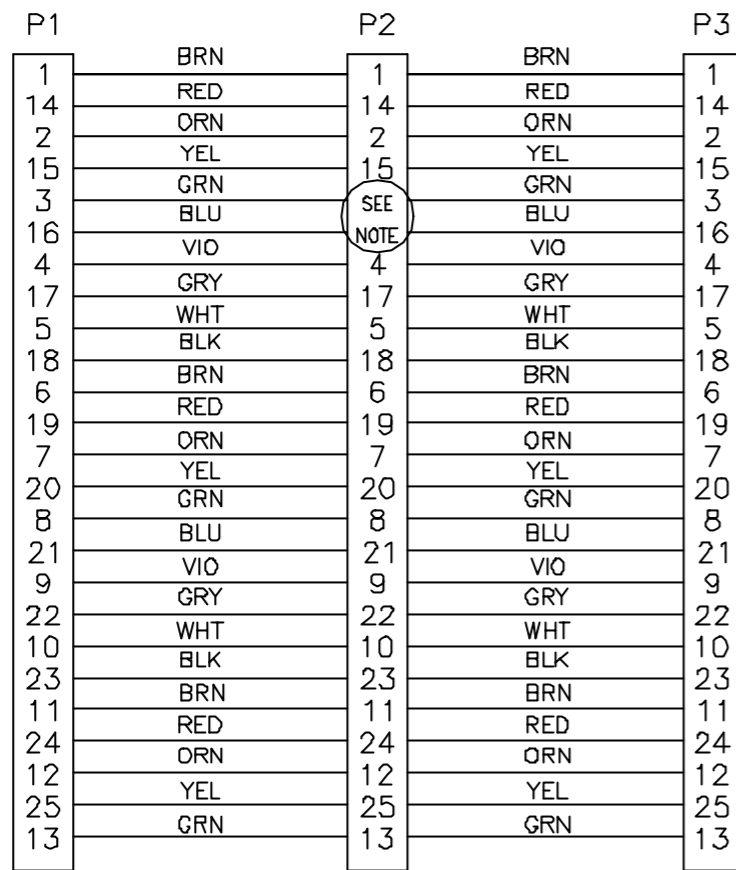


REVISIONS				
REV.	ZONE	DESCRIPTION	DATE	DRAWN

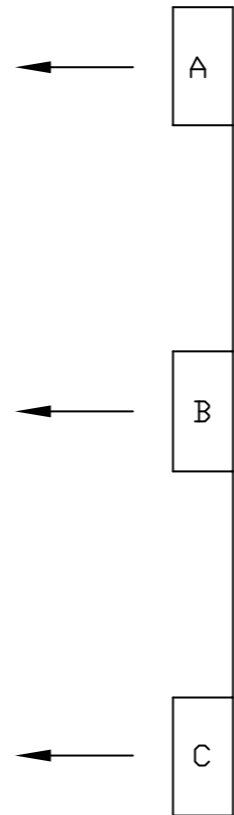
TO BB501
AXIS
FEEDBACK

TO
BAS
AMP P3

TO
AXIS
MX BOX P2



①
SIDE VIEW



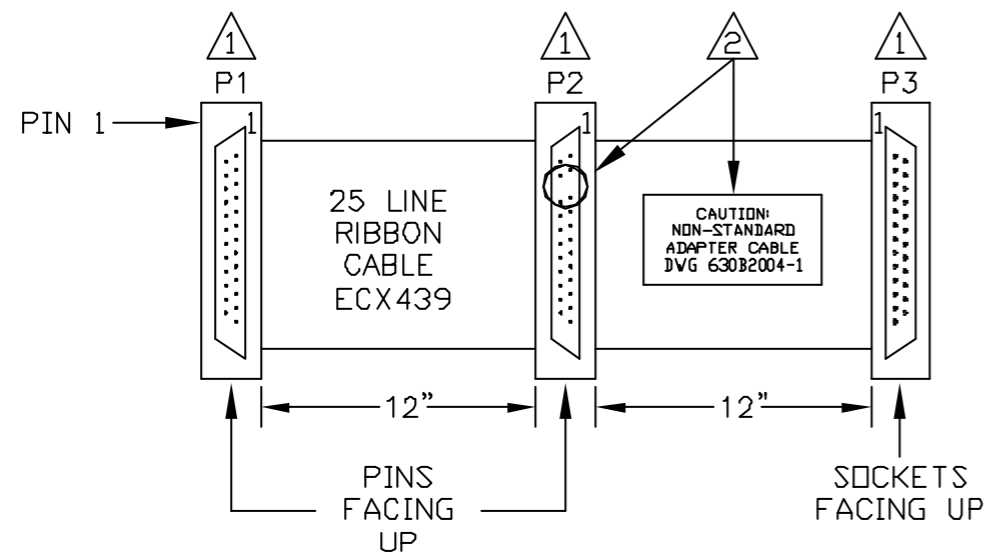
① NOTE DIRECTION OF CONNECTORS ON RIBBON CABLE.

② REMOVE PINS 3 & 16 FROM THE "P2" CONNECTOR. PLACE EXTRA CAUTION LABEL ON BOTH SIDES OF CABLE PER LABEL DETAIL.

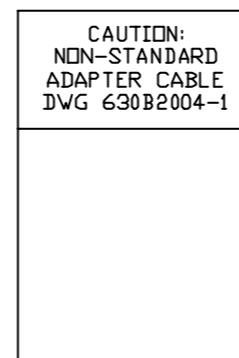
25 LINE MALE "D"
ECK1068
JACKSOCKETS, ECK363


25 LINE MALE "D"
ECK1222
JACKSOCKETS, ECK363

25 LINE FEMALE "D"
ECK1069
JACKSOCKETS, ECK363



LABEL
DETAIL:



PROPRIETARY INFORMATION THIS DRAWING IS THE PROPERTY OF AEROTECH, INC. AND IS SUBMITTED IN CONFIDENCE AND SHALL NOT BE REPRODUCED NOR COPIED NOR DISCLOSED TO OTHERS UNDER PENALTY OF LAW.			 AEROTECH, INC. 101 Zeta Drive Pittsburgh, PA. 15238 (412)963-7470 www.aerotech.com		
TOLERANCES ON FRACTIONS DECIMALS ANGLES 0 TO 6 ± 1/32 XX ± .01 ± D-30° OVER 6 ± 1/16 XXX ± .005			BAS FEEDBACK ADAPTER CABLE (25P-25P-25S)		
RMS FINISH <input checked="" type="checkbox"/> EXCEPT AS NOTED			PART CODE SIZE C20041-3-3 B 630B2004-1		
DRAWN JRF 06/03 CHECKED JLD 06/03 APPD. JLD 06/03	SCALE NTS FILE NAME 630B2004-101.dwg SHEET 1 OF 1		REV. -		