

REVISIONS				
REV.	ZONE	DESCRIPTION	DATE	DRAWN
A		ADDED ECN 9534 (ADDED FBF-1)	8/21/06	DCM
B		ADDED ECN 13357	5/5/11	MS

25 PIN D MALE ECK00786
BACKSHELL ECK00656

#24 AWG UNLESS OTHERWISE NOTED

PIN	WIRE	SIGNAL
13	ORN	BRK-
12	WHT	CW/+ LMT
11	-	-
10	-	-
9	-	-
8	-	-
7	BRN	MKR
6	BLK	MKR-N
5	-	-
4	-	-
3	#22 WHT/BRN	ENC +5V
2	-	-
1	SHIELD	SIG SHLD
14	WHT/RED	COS
15	VIO	COS-N
16	#22 WHT/BLU	LMT +5V
17	GRN	SIN
18	RED	SIN-N
19	-	-
20	#22 WHT/GRN	LMT COM
21	#22 WHT/YEL	ENC COM
22	PINK	HM LMT
23	-	-
24	GRY	CCW/- LMT
25	BLU	BRK+

WIRE SIDE VIEW

#24 AWG UNLESS OTHERWISE NOTED

SIGNAL	WIRE	PIN	
SIN-N	RED	H	
BRK+	BLU	J	
SIN	GRN	G	
-	-	K	
HM LMT	PINK	W	
CCW/- LMT	GRY	V	
CW/+LMT	WHT	U	
COS-N	VIO	F	
MKR	BRN	L	
MKR-N	BLK	X	
SIG SHLD	#22 GRN/WHT	Z	
BRK-	ORN	T	
COS	WHT/RED	E	
ENC +5V	#22 WHT/BRN	M *	
LMT +5V	#22 WHT/BLU	-	
MTR SHLD	MTR SHLD	#22 GRN/YEL	Y
MTR A	MTR ACT	#20 BRN	R *
FRM GND	FRM GND	#20 GRN	S *
LMT COM	#22 WHT/GRN	-	D *
ENC COM	#22 WHT/YEL	-	-
MTR B	MTR B	#20 YEL	N *
-	-	-	P *
MTR B-N	MTR BCT	#20 WHT	A *
-	-	-	B *
MTR A-N	MTR A'	#20 RED	C *

WIRE SIDE VIEW

BIPOLAR UNIPOLAR

BURNDY PLUG #UTG618-23SN (ECK00135)
CLAMP BURNDY #UTG18AC (ECK00617)

#28-22 SOCKETS BURNDY #SC24M-1TK6 (ECK00402)
CRIMP TOOL: BURNDY HANDLE W/HEAD ASSY N20RT-29
OR BURNDY CRIMPER MODEL UTM-2R W/HEAD ASSY CM11G1R

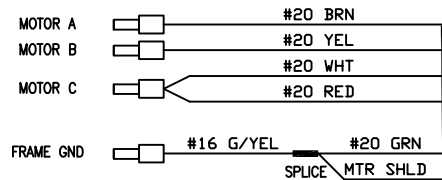
3 WIRE MARKERS
FLAG WIRES WITH BRADY LABELS, COMPUTER
FILE NO. 630C2025-101.

2 USE 2" LENGTHS OF THICK WALL HEATSHRINK TUBING
TO BUILD UP CABLE DIAMETER FOR
PROPER STRAIN RELIEFING.
STRAIN RELIEFING MUST WITHSTAND 35 LB. PULL.

CUT THICK WALL HEATSHRINK TUBING WITH CABLE CUTTER SUCH
THAT ENDS ARE PERPENDICULAR TO CABLE AND CUT IS SMOOTH.
THICK WALL HEATSHRINK TUBING:
EIW00112 MAX INSIDE DIA = .750" (EXPANDED),
MIN INSIDE DIA = .220" (RECOVERED)
EIW00113 MAX INSIDE DIA = .400" (EXPANDED),
MIN INSIDE DIA = .150" (RECOVERED)

1 STARTING CABLE LENGTH = A. R. LENGTH + 17 IN.

FOR CRIMP TOOL USE AMP HANDLE ASSY 58074-1
WITH AMP HEAD ASSY 58063-2



UNUSED WIRES:
#24 YEL
WHT/BLK, WHT/VIO

CABLE 682A1031
(ECX00445)

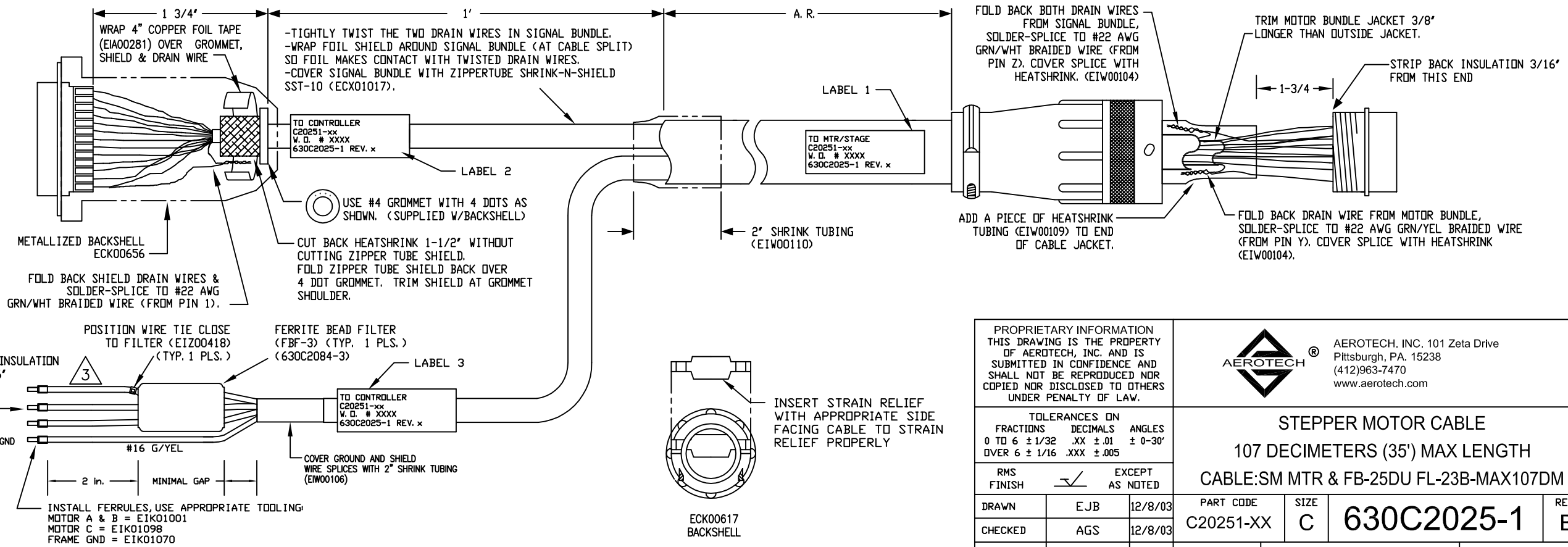
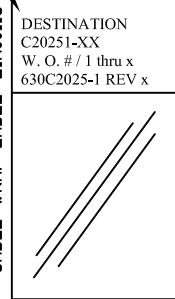
UNUSED WIRES:
BLU, ORN

* #20-16 SOCKETS BURNDY #SC16M-1TK6 (ECK00403)
CRIMP TOOL: BURNDY HANDLE W/HEAD ASSY N16RT-24

SEE LABELS 1, 2 & 3
FOR DESTINATION

LABELS FOR
C20251 CABLES:
(3) REQUIRED,
(1 AT EACH END)

CABLE WRAP LABEL: EIA00113



PROPRIETARY INFORMATION
THIS DRAWING IS THE PROPERTY
OF AEROTECH, INC. AND IS
SUBMITTED IN CONFIDENCE AND
SHALL NOT BE REPRODUCED NOR
COPIED NOR DISCLOSED TO OTHERS
UNDER PENALTY OF LAW.



AEROTECH, INC. 101 Zeta Drive
Pittsburgh, PA. 15238
(412)963-7470
www.aerotech.com

TOLERANCES ON
FRACTIONS DECIMALS ANGLES
0 TO 6 ± 1/32 .XX ± .01 ± 0-30'
OVER 6 ± 1/16 .XX ± .005

RMS FINISH ✓ EXCEPT AS NOTED

DRAWN	EJB	12/8/03
CHECKED	AGS	12/8/03
APPD.	AGS	12/8/03

STEPPER MOTOR CABLE			PART CODE		SIZE	REV.
107 DECIMETERS (35') MAX LENGTH			C20251-XX		C	B
CABLE:SM MTR & FB-25DU FL-23B-MAX107DM			SCALE NTS		FILE NAME 630C2025-1B1.dwg	SHEET 1 OF 1
			630C2025-1			